

(Byrrhidae), 450
65 10
Limnichinae i Byrrhinae. (*Byrrhus pilula*) i
(*Cytilus sericeus*),

, (2,5 11).

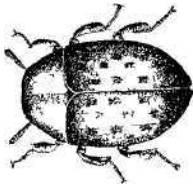
11-

5-

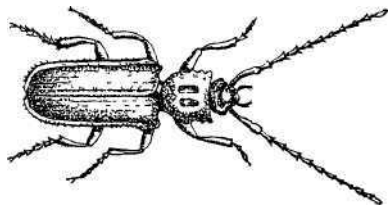
).

Byrrhidae — , 1901, .55—93;
.1, .; , 1965;

Mroczkowski M. Byrrhidae. — Klucze do oznaczania owadów Polski, 1958, cz. 19, z. 50—51.
. - , 1939, .2.



(Cucujidae), 1000
 17. 80
unidentatus),— i (*Uleiota planatus*), (*Silvanus*
 — (*Laemophloeus ferrugineus*) -
 1,3-6 (15),
 11- , 2 -
 Cucujidae — , 1901, .25;
 .2. ; , 1965.



(Ptinidae), 450, 35, 8.

(*latro*), (*Niptus holosericeus*), (*Ptinus fur*), (1,5—5)

5-

4,3, 3,1, 2, 1 (25—28 ° 3).

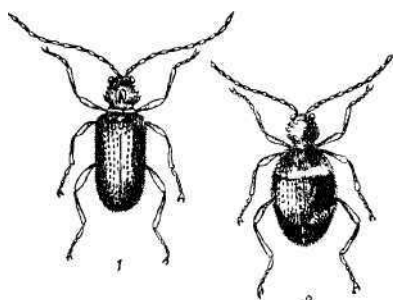
20—30 - 60—70 °

1901;

Ptinidae — , 1940, .2;

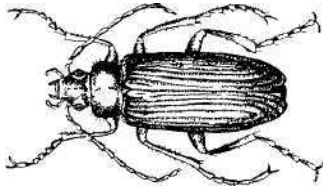
.2. ; , 1965;

— , 1973.

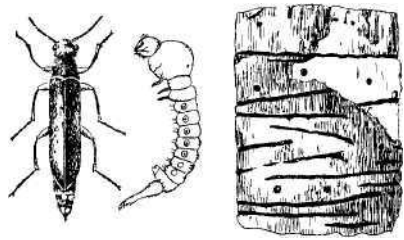


1 — ; 2 —

...
(Alleculidae), . . . 2600 ,
, . . . 100, . . . 8 .
(*Omophlus betulae*), . . . (*Prionychus ater*), . . .
(. . .).
, . . .
(4—13), . . .
, . . .
, . . . 2 . . . (. . .)
, . . .)
∴ . . . Alleculidae — . . . :
. . . 2. . . ; . . . 1965;
. . . — . . . 1964.



. . .
 (Lymexylonidae), . . . 50 (. . .
 70) , . . . ycix , . . . 4 ,
 ix 3: . . . , . . . (*Elateroides dermestoides*), . . . (. . .
flabellicornis), . . . , . . . (*Lymexylon navale*).
 i , . . . (. . .) .1—
 2 . . . , . . . i
 : ix ,
 : . . . ,
 (. . . 6—18) , . . . ,
 , . . . , . . . , . . . , . . .
 . . . 11- , . . . 5- , . . .
 , . . . , . . . , . . . , . . .
 , . . . 22 , . . . , . . . pa
 , . . . 1 . . .



: , i

i. - 1985. - .4. - . 525.

(Cryptophagidae),

1000

170

i

ix

18

(*Atomaria linearis*),

pac i i

i

(*Cryptophagus acutangulus*),

(. 5)

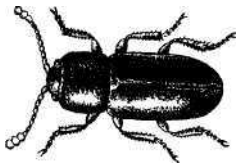
5-

11-

3-

. Cryptophagidae —
- . 1965.

— .:



(Lathridiidae), 600
 100 i . 11
bergrothi), C. (*L. minutus*), (*Corticarina fuscula*). (*Lathridius*
 (0,8—3).
 8—11- 3-
 3-

. Lathrididae — ., 1901;
 .; ., 1965, . 2;
 (. -), 1940, . 2.