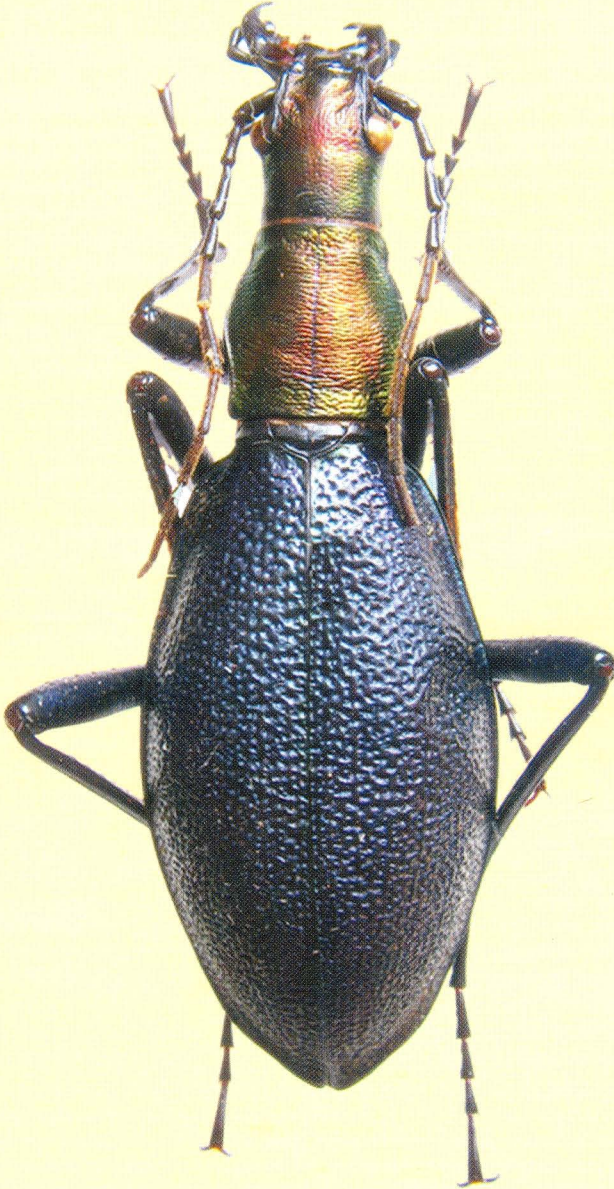


UNION DES ENTOMOLOGISTES BELGES  
Sous le Haut Patronage de S.M. le ROI

# LAMBILLIONEA

REVUE INTERNATIONALE D'ENTOMOLOGIE



108ème ANNEE  
N° 1 MARS 2008 Tome I  
BRUXELLES (Tervuren)

## NEW TAXA OF THE TRIBE CARABINI (Coleoptera, Carabidae)

Dmitry OBYDOV \*

\* Timiryazev's State Museum of Biology, 123242, Malaya Gruzinskaya str. 15, Moscow, Russia. E-mail: obydozd@mtu-net.ru

**Résumé.** Deux nouvelles sous-espèces de la tribu des Carabini: *Callisthenes* (s. str.) *kuschakewitschi sidzhakensis* ssp. n. et *Carabus* (*Damaster*) *blaptoides simuschirensis* ssp. n. sont décrites d'Asie Centrale et des îles Kurile. Leurs caractères distinctifs sont définis.

**Abstract.** Two new subspecies of the tribe Carabini: *Callisthenes* (s. str.) *kuschakewitschi sidzhakensis* ssp. n. and *Carabus* (*Damaster*) *blaptoides simuschirensis* ssp. n. are described from Middle Asia and Kuril Islands. Diagnostic data are given.

**Key words:** Coleoptera, Carabidae, Carabini, *Callisthenes*, *Carabus*, new subspecies, Middle Asia, Kuril Islands.

### Descriptions

*Callisthenes* (s. str.) *kuschakewitschi sidzhakensis* ssp. n. (Fig.1).

**Material examined: Holotype:** male with label: "Uzbekistan-Kazakhstan border, Ugamsky Mt. Ridge., 2100 m, 15 km N-W Sidzhak Village, 1.VI.1978" (the collector is not known); **Papatypes:** male, female, same data and same locality. (State Museum of Biology, Moscow)

**Description:** Body length in males 26.0-26.8 mm (including mandibles), width 10.3-10.7 mm; body length in female 27.8 mm, width 11.5 mm.

Head strongly thickened, ratio width of pronotum/width of head 1.70; eyes slightly convex; mandibles long, narrow, slightly incurved; terebral tooth of the right and left mandibles bi-dentate, moderately prominent; retinaculum of the right and left mandibles small, slightly prominent.

Frontal furrows shallow, indistinct, inside with sparse coarse wrinkles. Frons, vertex and neck with sparse, more or less coarse wrinkles. Labrum not wider than clypeus, strongly notched, with 2 setae. Antennae short, protruding beyond the base of pronotum by 1-2 apical segments; palpi slightly dilated; penultimate segment of the maxillary palpi longer than the last segment; penultimate segment of the labial palpi with 5 setae. Mentum tooth very short and narrow, much shorter than lateral lobes; submentum without setiferous pores.

Prothorax transverse, broad, broadest at about middle; ratio width/length 1.85. Pronotum with dense coarse wrinkles. Median longitudinal line distinct; basal foveae shallow oval, inside with coarse wrinkles. Sides of pronotum broadly margined, its margin strongly bent upwards; lobes of hind angles evenly rounded. Lateral margin with 2-3 setiferous pores.

Elytra oval, convex, widest at about middle; shoulders strongly prominent; sides of elytra broadly margined. Ratio length/width 1.40; ratio width of elytra/width of pronotum 1.20. Elytral sculpture triploid, rough with short transverse coarse wrinkles, all elytral interspaces more prominent, than in *C. kuschakewitschi kuschakewitschi*. Primary foveoles indistinct.

Metepisternum with fine wrinkles, slightly longer than its width. Abdominal sternites with sparsely fine wrinkles; sternal sulci deep and long.

Legs of normal length; anterior male tarsi with three dilated segments bearing hairy pads.

Shape of aedeagus and endophallic structure in general is characteristic for the species.

Coloration black, antennae and claws brown.



Fig.1. *C. kuschakewitschi sidzhakensis* ssp. n., (Holotype)

Fig.2. *C. kuschakewitschi kuschakewitschi*

Fig.3. *C. blaptoides simuschirensis* ssp. n., (Holotype)

Fig.4. *C. blaptoides rugipennis*

### Differential diagnosis

The new subspecies differs from *C. kuschakewitschi kuschakewitschi* Ballion, 1870 (Fig.2), and its subspecies, which is widely distributed in the Middle Asia by the following features: mandibles broader and longer; head with more rough sculpture; pronotum with much more rough sculpture; elytra more convex, its sculpture much more rough with transverse coarse wrinkles; sternal sulci deeper and longer; body more robust; coloration always black, antennae and claws brown.

**Distribution:** Up to now only one population from Ugamsky Mt. Ridge is known.

### *Carabus (Damaster) blaptoides simuschirensis* ssp. n. (Fig. 3).

**Material examined: Holotype:** female with label: "Kuril Islands, Simushir Island, the party of Okhotsk Sea, Average Bay, 26.VII.2007, A.K. Klitin leg." (State Museum of Biology, Moscow)

**Description:** Body length is 39.4 mm (including mandibles).

Head thickened, ratio width of pronotum/width of head 1.41; eyes slightly convex; mandibles long, narrow, slightly incurved and sharply pointed at the apex; terebral tooth of the right mandible bi-dentate, moderately prominent; terebral tooth of the left mandible uni-dentate; retinaculum of the right and left mandibles slightly prominent; surface of mandibles smooth. Frontal furrows shallow, inside with long coarse longitudinal wrinkles. Frons nearly smooth, vertex and neck laterally with coarse transverse wrinkles. Labrum wider than clypeus, slightly notched, without lateral setae. Antennae long, protruding beyond the base of pronotum by 4 apical segments; palpi strongly dilated; penultimate segment of the maxillary palpi shorter than the last segment; penultimate segment of the labial palpi with 2 setae. Mentum tooth small, slightly shorter than lateral lobes; submentum without setiferous pores.

Prothorax longitudinal, broadest at about middle; ratio length/width 1.10. Pronotum with dense coarse transverse wrinkles. Median longitudinal line distinct. Sides of pronotum narrowly margined; lobes of hind angles bent outwards; basal foveae indistinct. Lateral margin without setiferous pores.

Elytra oblong-oval, narrow, moderately convex, widest at about middle; shoulders slightly prominent; sides of elytra narrowly margined; at the apex elytral margins with incisures. Ratio length/width 2.10; ratio width of elytra/width of pronotum 1.93. Elytral sculpture with dense coarse punctures; its punctuation more sparse apically.

Metepisternum smooth, slightly longer than its width. Abdominal sternites smooth; sternal sulci absent; legs long.

Coloration black, prothorax with weak green lustre.

### Differential diagnosis

The new subspecies differs from *C. blaptoides rugipennis* Motchulsky, 1861 (Fig.4) (the area of this subspecies is located most close to the area of the new subspecies) by following features: head more thickened; eyes less convex; head and prothorax black (in *C. blaptoides rugipennis* head and prothorax usually bronze or green); elytra much more narrower, longer and less convex; punctuation of elytra more coarse and more sparse apically; at the apex elytral margins with incisures; sternal sulci absent (in *C. blaptoides rugipennis* and other subspecies of *C. blaptoides* sternal sulci usually deep and long); legs longer.

**Distribution:** Kuril Islands, Simushir Island.

**Remark:** It is the most northern subspecies of *C. blaptoides* (see the map).

## Acknowledgements

I wish to express my hearty gratitude to Dr. Andrey K. Klitin (South-Sakhalinsk) who kindly submits material for studies.

The research was supported by the Kuril Biocomplexity Project, an international, inter-disciplinary research program funded by the U.S. National Science Foundation

## References

- BALLION E., 1870. Eine Centurie neuer Käfer aus der Fauna des russischen Reiches. Diagnosen der neuen Arten. *Bulletin de la Société impériale des Naturalistes de Moscou*, XLIII: 320-353.
- IMURA Yu. & MIZUSAWA K., 1996. The Carabus of the World. Mushi-Sha's Iconographic Series of Insects 2, Tokyo: 261 pp.
- LAFER G. S., 1989. [The determinant of insects of Far East USSR, T. III. Coleoptera 1, Carabidae]. Leningrad: 71-222 [in Russian].
- LAFER G. S., 2002. [Ground beetles (Coleoptera, Carabidae) of southern oceanic islands of the Greate Kuril Ridge]. *Euroasian Ent. Journal* I (1): 47-66 [in Russian].

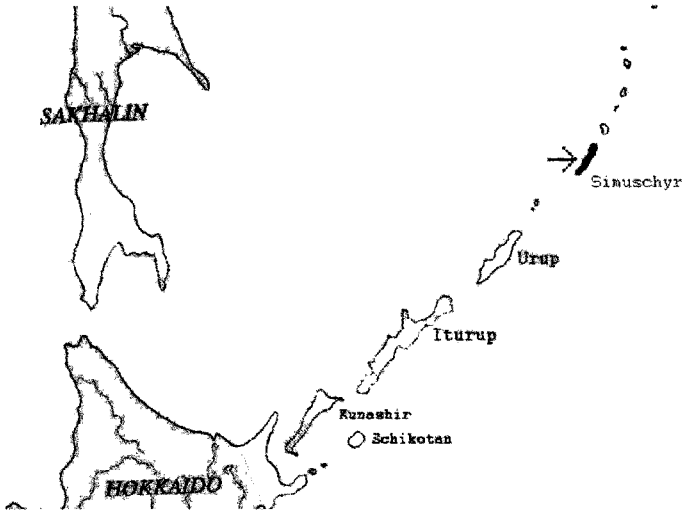


Fig.5. Map of Hokkaido, South Sakhalin and Kuril Archipelago: distribution of *C. blaptoides simuschirensis* ssp. n.