

***Oberea coreensis* Breuning, 1947, new rank
(Coleoptera, Cerambycidae)
from Korea and Russia**

M.L. Danilevsky¹, S.-H. Oh²

¹A.N. Severtzov Institute of Ecology and Evolution, Russian Academy of Sciences
Leninsky prospect 33, Moscow 119071 Russia
e-mail: danilevskym1@rambler.ru, danilevsky@cerambycidae.net

²101, Manseung Bldg., 49, 149-gil, Myeongseong-ro, Galmal-eup,
Cheorwon-gun, Gangwon-do, 24037, Republic of Korea
e-mail: clytoid@gmail.com

Key words: Cerambycidae, Lamiinae, *Oberea*, taxonomy, new rank, Korea, Russia.
Abstract: *Oberea atropunctata* m. *coreensis* Breuning, 1947 (unavailable name) was validated (ICZN, 1999, Art. 45.6.4.1.) by Gressitt (1951: 633), who published it as a subspecies name: *Oberea atropunctata coreensis* Breuning, 1947. The name is upgraded to species rank. The species is redescribed and recorded from Russian Far East (Ussuri Land) and South Korea (Gangwon-do).

A rather common Korean *Oberea* was overlooked and misidentified by several authors. First time it was wrongly recorded for Korea by Saito (1932) as *O. formosana* Pic, 1911, then by Cho (1946) and Lee (1982, 1987) as *O. fuscipennis* (Chevrolat, 1852); by Lee (1987) as *O. atropunctata* Pic, 1916. Two Russian specimens of the species (male and female from Primorsky Region) were also wrongly identified as *O. atropunctata* Pic, 1916 by Danilevsky (1993).

Now it is identified as *Oberea coreensis* Breuning, 1947, **new rank**.

Oberea atropunctata m. *coreensis* Breuning, 1947 (unavailable name) was described from South Korea. The name was validated (ICZN, 1999, Art. 45.6.4.1.) by Gressitt (1951: 633), who published it as a subspecies name: *Oberea atropunctata coreensis* Breuning, 1947.

***Oberea* (s. str.) *coreensis* Breuning, 1947, new rank**

Figs 1-10

- Oberea atopunctata* m. *coreensis* Breuning, 1947: 58 (unavailable name) - "Corée méridionale".
- Oberea heloxantha* var. *formosana*, Saito, 1932: 443 (non Pic, 1911: 20) - "Hitherto unrecorded from Corea".
- Oberea fuscipennis*, Cho, 1946: 59 (non Chevrolat, 1852: 419); Cho, 1961: 121; Lee, 1982: 72, Pl. VIII-187; 1987: 208, Pl. 25-286.
- Oberea formosana*, Gressitt, 1951: 595 (non Pic, 1911:20), part, including Korea; Cho, 1961: 120; Lee, 1979: 83.
- Oberea atopunctata coreensis*, Gressitt, 1951: 633 - "Korea".
- Oberea atopunctata simplex*, Breuning, 1960: 52, part. (non Gressitt, 1942)
- Oberea atopunctata* var. *simplex*, Breuning, 1962: 169, part. (= *coreensis* Breun.) - "Chine septentrionale: Shanghai et Corée".
- Oberea atopunctata* m. *simplex*, Breuning, 1967: 819, part. (= *coreensis* Breun.).
- Oberea atopunctata*, Lee, 1987, 207 (non Pic, 1916: 17 - Yunnan); Danilevsky, 1993: 116 - "USSR, Primorie, Ussuriisk, Buianki".
- Oberea simplex*, Danilevsky & Smetana, 2010: 300, part. (non Gressitt, 1942: 91)
- Oberea* (s. str.) *fuscipennis fuscipennis*, Jang et al., 2015: 374 (non Chevrolat, 1852: 419) - whole Korea.
- Oberea* (s. str.) *atopunctata*, Hwang, 2015: 480 (non Pic, 1916: 17 - Yunnan).

Type locality. South Korea - after original description.

Description. Body strongly attenuated, very narrow; head orange, genae about 2 times shorter than ventral eye lobe; antennae black or dark brown, in males and in females hardly reaching elytral apices; 3rd antennal joint a little longer than 1st and about as long as 4th, which is shorter than 5th; prothorax always totally orange, cylindrical, about as wide anteriorly as posteriorly; slightly widened near middle; about 1.1 times shorter than basal width; pronotum convex, with small irregular dense punctation, with hardly visible short pale pubescence; elytra yellow with dark lateral areas and apices (humeral angle yellow), with yellow stripe anteriorly on epipleurae; more or less darkened posteriorly - grey-yellow; very narrow and narrowed at middle, about 5 times longer than basal width; with emarginated apices, internal angle obliterated, external angle attenuated in distinct spine; elytral punctation big and distinct,

M.L. Danilevsky, S.-H. Oh

arranged longitudinally in anterior two thirds of elytra, posteriorly - irregular; meso- and metathorax orange, metathorax could be slightly darkened medially; legs totally orange; abdomen in males orange with black 2nd and 3rd segments, 4th segment could be darkened at middle; in females abdomen orange with laterally darkened 3rd and 4th segments or about totally orange; in males pygidium shallowly emarginated, postpygidium truncated, last abdominal sternite with deep depression nearly reaching its anterior margin, emarginated apically; body length in males: 13.5-17.5 mm, width: 2.0-2.8 mm; body length in females: 15.0-18.0, width: 2.4-2.9 mm.

Materials. male, Russia, Far East: “Bujanki, 27-29.06.89, U.Roesileht” (collection of M.L. Danilevsky); 12 males, 5 females (collection of S.-H. Oh): 3 males, 3 females, Republic of Korea, Mt. Bokju-san, Hwacheon-gun [GW], 38.1577°N, 127.52697°E, 27.6.2014, S.-H. Oh leg.; 2 males, 1 female, Republic of Korea, Mt. Gwangdeok-san, Cheorwon-gun [GW], 38.163°N, 127.438°E, 28.6.2011, 13.6.2012, S.-H. Oh leg.; 1 male, Republic of Korea, Mt. Hae-san, Hwacheon-gun [GW], 38.18°N, 127.79°, 25.6.2013, S.-H. Oh leg.; 2 males, Republic of Korea, Mt. Myeongseong-san, Choerwon-gun [GW], 38.12036°N, 127.35685°E, 2 and 9.6.2012, S.-H. Oh leg.; 1 male, 1 female, Republic of Korea, Cheonmi-ri, Yanngu-gun [GW], 38.23944°N, 127.88057°E, 4.6.2012, S.-H. Oh leg.; 1 male, Republic of Korea, Daema-ri, Cheorwon-gun [GW], 38.2488°N, 127.1643°E, 9.7.2010, S.-H. Oh leg.; 1 male, Republic of Korea, Mt. Eungbok-san, Hongcheon-gun [GW], 37.87°N, 128.42°E, 30.6.2013, S.-H. Oh leg.

Distribution. Only one locality is known in Russia in the south of Primorsky Region: Buyanki environs (about 44°10'9"N, 132°52'41"E) in about 80 km north-eastwards Ussuriysk. Photos of a male and a female of *Oberea* (s. str.) *coreensis* Breuning, 1947, **new rank** (as “*Oberea* (s. str.) *fuscipennis fuscipennis* Chevrolat, 1852”) were published by Jang et al. (2015: 374) together with a description (in Korean) and an areal map covered the whole territory of Korean Peninsula. The species must be also distributed in North China.

Biology. Imagoes are active in June-July. The food-plant of the species must be *Celastrus orbiculatus* Thunb. The specimens were observed flying around that plant after 4 pm to sunset, and are most active during fluorescence of the plant. They take a rest and copulate

on the leaves.

Note. Lin (2015: 246) published photos of holotype-male of *Oberea simplex* Gressitt, 1942 described from Anhwei, East China. That very close species has less narrow body, with smaller elytral punctation less arranged longitudinally.

Oberea fuscipennis (Chevrolat, 1852) described from “Schangai” has totally pale elytra and totally pale abdomen. Photo of the holotype of *Isosceles fuscipennis* Chevrolat, 1852: was published by Li et al. (2016: 362). Photo of the holotype of *Oberea rosi* Gressitt, 1940 [= *Oberea fuscipennis* (Chevrolat, 1852)] from Hainan Is. was published by Lin (2015: 245).

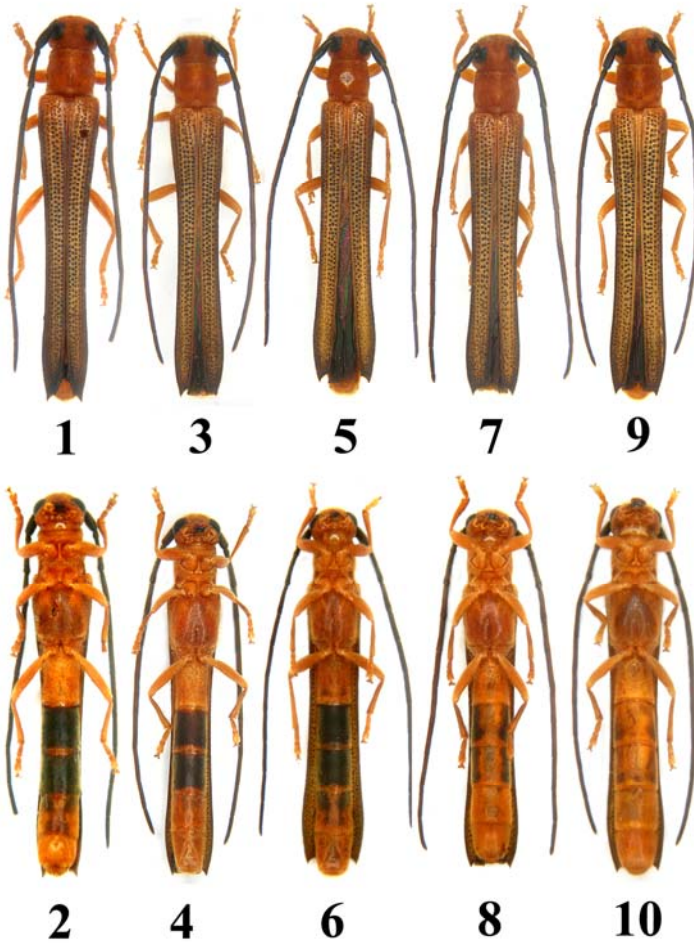
Oberea atropunctata Pic, 1916 described from Yunnan has black humeral elytral angle and partly black legs. Photo of the holotype was published by Li et al. (2017: 127).

REFERENCES

- Breuning S. 1947. Quelques nouvelles formes des genres Nupserha Thomson, Oberea Mulsant, Conizonia Fairmaire et Phytoecia Mulsant. - *Miscellanea Entomologica*. 44: 57-61.
- Breuning S. 1960. Revision systématique des espèces du genre Oberea Mulsant du globe (Coleoptera, Cerambycidae). (1ère partie).- *Frustula Entomologica*. 3(4): 1-59.
- Breuning S. 1962. Revision systématique des espèces du genre Oberea Mulsant du globe (Coleoptera, Cerambycidae). (3ème partie).- *Frustula Entomologica*. 5(4): 141-232 + vi.
- Breuning S. 1967. 10. Lieferung, pp: 771-864. - In: S.Breuning, 1958-1969. *Catalogue des Lamiaires du Monde (Col. Céramb.)*. Tutzing bei München: Verlag des Museums G.Frey: 1069 pp.
- Chevrolat L.A.A. 1852. Description de coléoptères nouveaux.- *Revue et Magasin de Zoologie Pure et Appliquée*. (2)4: 414-422.
- Cho P.-S. 1946. A List of Longicorn Beetles from Korea.- *Bulletin of the Zoological Section of National Science Museum*. Seoul. 1(8): 27-61.
- Cho P.-S. 1961. A Taxonomical Studies on the Longicorn Beetles in Korea (Cerambycidae: Coleoptera).- *Journal of the Korean National Academy of Sciences Reports*. Volume 3. Seoul: 171 pp., 3 pls.
- Danilevsky M.L. 1993. New species of Cerambycidae (Coleoptera) from East Asia with some new records. - *Annales Historico-Naturales Musei Nationalis Hungarici*. 84 [1992]: 111-116.
- Danilevsky M.L., Smetana A. 2010. [Cerambycidae taxa from Russia and countries of former Soviet Union, and Mongolia] subfamily Lamiinae [without Dorcadionini]: pp. 207-334. - In I. Löbl & A. Smetana (ed.): *Catalogue of Palaearctic Coleoptera*, Vol. 6. Stenstrup: Apollo Books. 924 pp.

M.L. Danilevsky, S.-H. Oh

- Hwang S.-H. 2015. Long-horned beetles of Korea. Check list of Organisms in Korea 14. Seoul: Econature. 551 pp. [in Korean].
- Gressitt J.L. 1942. Nouveaux longicornes de la Chine orientale.- Notes d'Entomologie Chinoise. 9: 79-97, 2 pls.
- Gressitt J.L. 1951. Longicorn beetles of China. In: Lepesme P. Longicornia, etudes et notes sur les longicornes. Volume 2. Paris: Paul Leechevalier. 667 pp., 22 pls.
- ICZN, 1999. International code of zoological nomenclature. 4th edition. London: The International Trust for Zoological Nomenclature, c/o The Natural History Museum: xxix+306 pp.
- Jang H.-K., Lee S.-H. & Choi W. 2015. Cerambycidae of Korea. Seoul: Geobook. 399 pp. [in Korean]
- Lee S.-M. 1979. A Synonymic List of Longicorn Beetles of Korea.- Korean Journal of Entomology. 9(2): 29-83.
- Lee S.-M. 1982. Longicorn beetles of Korea (Coleoptera: Cerambycidae).- Insecta Koreana. Series 1: 101 pp.
- Lee S.-M. 1987. The Longicorn beetles of Korean Peninsula. Seoul: National Science Museum. 388 pp. [in Korean].
- Li Z., Cuccodoro G., Chen L. 2017. Some taxonomic notes on the genus *Oberea* Dejean, 1835 from Asia (Coleoptera, Cerambycidae, Lamiinae). - ZooKeys. 647: 121-136.
- Li Z., Tian L., Cuccodoro G., Chen L., Lu Ch. 2016. Taxonomic note of *Oberea fuscipennis* (Chevrolat, 1852) based on morphological and DNA barcode data (Coleoptera, Cerambycidae, Lamiinae).- Zootaxa. 4136(2): 360-372.
- Lin M.-Y. 2015. Album of Type Specimens of Longhorn Beetles Deposited in National Zoological Museum of China. Zhengzhou: Henan Science and Technology Press. 374 pp.
- Pic M. 1911. Longicornes de Chine en partie nouveaux. Pp. 19-21. - Matériaux pour servir à l'étude des longicornes. 8ème cahier, 1ère partie. Saint-Amand (Cher): Imprimerie Bussière. 24 pp.
- Pic M. 1916. Longicornes asiatiques. Pp. 12-19. - Matériaux pour servir à l'étude des longicornes. 10ème cahier, 1ère partie. Saint-Amand (Cher), Imprimerie Bussière. 20 pp.
- Saito K. 1932. On the Longicorn Beetles of Corea. Essays in celebration of the 25th Anniversary of the Agricultural and Forestry college Suigen: 439-478.



Figs 1-10. *Oberea* (s. str.) *coreensis* Breuning, 1947, new rank:

1 - male (dorsal view), Russia, Far East: "Bujanki, 27-29.06.89, U.Roesileht"; 2 - same (ventral view); 3 - male (dorsal view), Republic of Korea, Mt. Myeongseong-san, Choerwon-gun [GW], 38.12036°N, 127.35685°E, 2.6.2012, S.-H. Oh leg.; 4 - same (ventral view); 5 - male (dorsal view), Republic of Korea, Mt. Hae-san, Hwacheon-gun [GW], 38.18°N, 127.79°E, 25.6.2013, S.-H. Oh leg.; 6 - same (ventral view); 7 - female (dorsal view), Republic of Korea, Mt. Gwangdeok-san, Cheorwon-gun [GW], 38.163°N, 127.438°E, 28.6.2011, S.-H. Oh leg.; 8 - same (ventral view); 9 - female (dorsal view), Republic of Korea, Cheonmi-ri, Yanngu-gun [GW], 38.23944°N, 127.88057°E, 4.6.2012, S.-H. Oh leg.; 10 - same (ventral view).

Received: 20.08.2017

Accepted: 06.10.2017