

# New data on the taxonomy and distribution of leaf beetles in Israel (Coleoptera: Chrysomelidae)

I.K. Lopatin

Lopatin, I.K. 2002. New data on the taxonomy and distribution of leaf beetles in Israel (Coleoptera: Chrysomelidae). *Zoosystematica Rossica*, **10**(2), 2001: 379-380.

*Calomicrus (Nymphius) friedmani* sp. n. from Israel is described. Some new synonymies are established and new data on distribution of Chrysomelidae are given.

I.K. Lopatin, Department of Zoology, Byelorussian State University, pr. Skoryny 4, Minsk 220050, Belarus.

## *Smaragdina hellenica* (Marseul, 1868)

= *S. tibialis flavipes* L. Medvedev, 1992, **syn. n.**

*Material examined. Israel:* Mt. Hermon, Mezudat Nimrod, 16 km ENE of Qiryat Shemona, 7.V.1994 (M. Volkovich & M. Dolgovskaya); Mt. Hermon, 1400 m, on *Cotoneaster recemiflorus* var. *nummularia*, 27.V.1999 (V. Chikatunov); Golan Heights, Panyas, on *Rubus* sp., 27.V.1999 (I. Lopatin).

## *Smaragdina tibialis* ab. *bioculata* Lacordaire, 1848

*Material examined. Israel:* Har Meron, 1100 m, 22.V.1998 (A. Freidberg).

Extremely rare aberration of *S. tibialis* Brullé with two ochraceous markings on the pronotum.

## *Coptocephala jaechi* Warchalowski, 1991

= *C. furthi* L. Medvedev, 1992, **syn. n.**

*Material examined. Israel:* South Negev, Har Hizqiyahu, 880 m, 9 km NW of Elat, 8.IV.1994 (V. Zaitzev); Nahal Zihor, 26 km N of Shizzafon, 12.IV.1994 (M. Volkovich & M. Dolgovskaya); Nahal Hazera, 20 km ESE of Dimona, 13.IV.1994 (V. Zaitzev); Dead Sea, Nahal Ze'elim, 4 km N of Horvot Mezada (Messada), 15.IV.1994 (V. Zaitzev); Central Negev, Nahal Neqarot, 11 km SE of Mizpe Ramon, 17.IV.1994 (V. Zaitzev); Upper Galilee, 7 km NW of Meron, 22-24.VII.1996 (M. Volkovich). *Jordan:* valley of Jordan River, 24.III.1956 (J. Klapperich); Wadi el Kelt, 31.III.1967 (J. Klapperich).

## *Coptocephala judaea* L. Medvedev, 1992

*Material examined. Israel:* valley of Jordan River, Ha Yarden, NE of Karkom, 6.V.1994 (M. Volkovich); Mt. Hermon, Mezudat Nimrod (Fortress), 26-27.VII.1996 (M. Dolgovskaya & M. Volkovich).

## *Cheilotoma beldei* Kasap, 1984

= *Ch. musciformis ammanica* Lopatin, 1995, **syn. n.**

*Material examined. Israel:* Dead Sea, En Gedi, 1.V.1971 (Bytinski-Salz); Sedom, 25.IX.1971 (Bytinski-Salz).

## *Melixanthus granularis* (Suffrian, 1857)

= *M. brunnicollis* (Suffrian, 1857), **syn. n.**

*Material examined. Israel:* Mizad Zohar, on *Acacia raddiana*, 2.IV.2001 (L. Friedman).

## *Calomicrus (Nymphius) ensifer* Guillebeau, 1891

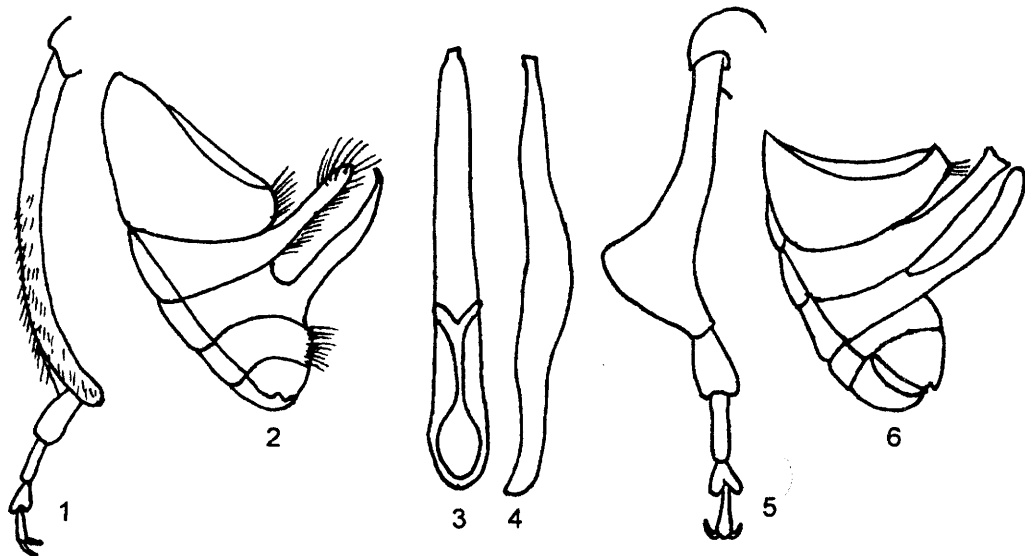
*Material examined. Israel:* Mt. Hermon, 1800 m, 25.V.1998 (V. Chikatunov); same locality, 2100 m, numerous on *Cotoneaster recemiflorus* var. *nummularia*, 27-28.V.1999 (I. Lopatin).

## *Calomicrus (Nymphius) friedmani* sp. n. (Figs 1-4)

*Holotype* ♂, *Israel*, Bor Hemet, 19.IV.2001 (L. Friedman leg., Zoological Museum, Tel Aviv University, Israel).

*Paratypes. Israel:* 1 ♂, 5 ♀, Nahal Ha Shitta, Hwy 90, km 82, 30°08.50'N, 35°08.40'E, light trap BL, VI.1999 (I. Yarom & V. Kravchenko leg., 3 ♀ deposited with the holotype, 1 ♂ and 2 ♀, in the author's collection).

*Description.* Pale fulvous; pronotum yellow; antennae and legs slightly reddish; eye and base of 1st segment of hind tarsus black. Body flattened dorsally, shining. Head slightly narrower than pronotum; eyes large, strongly convex. Frons width 1.2 times the diameter of eye; frontal tubercles feebly convex; frontal ridge between antennal sockets narrow; clypeus triangular, feebly convex. Antennae slender, with 1st and 2nd



**Figs 1-6.** 1-4, *Calomicrus (Nymphius) friedmani* sp. n.: 1, middle tibia and tarsus; 2, abdomen; 3, 4, aedeagus from below (3) and from side (4); 5, 6, *C. (N.) buettikeri* L. Medvedev: 5, middle tibia and tarsus; 6, abdomen.

segments subequal in length; ratio of segment lengths as 19 : 8 : 9 : 15 : 17 : 15 : 15 : 15 : 13 : 16. Pronotum 1.4 times as broad as long, feebly convex, with dense and fine superficial punctation; lateral margin of pronotum broadly rounded, with short and sparse hairs. Anterior angles of pronotum slightly prominent and broadly rounded, with deep setiferous pores; posterior angles blunt. Scutellum triangular, smooth. Elytra 3 times as long as pronotum and 1.8 times as long as broad, shining, densely and finely punctured, with short and sparse erect hairs on the apical part. Anterior tarsus with 1st segment wide, rectangular, not longer than 2nd segment; 3rd segment a little shorter than 2nd one. Claws with denticle. Middle tibiae (Fig. 1) curved, not broadened at apex; 1st segment of middle tarsus distinctly broadened. Hind tarsi with 1st segment 1.3 times as long as next segments combined. Abdomen with long processes on 2nd and 3rd segments (Fig. 2), first of them with long erect bristles. Aedeagus (Figs 3, 4) long and narrow.

**Comparison.** The new species is close to *C. (N.) buettikeri* L. Medvedev, 1996 from Saudi Arabia, the latter differs in the strongly widened subapically middle tibiae (Fig. 5) and differently shaped abdominal processes (Fig. 6).

**Etymology.** The new species is dedicated to my young friend Dr. Leonid Friedman, Tel Aviv University, who has found many interesting beetles in Israel.

#### **Acmenychus planus** Maulik, 1919

**Material examined.** **Israel:** Upper Galilee, Hula, 26.VI.1974 (A. Freidberg); Golan Heights, En Gev, 20.X.1973 (D. Furth); Dead Sea, Enot Zuqim, 22.XI.1976, 7.XII.1992 (A. Freidberg); Arava Valley, Sappir, 9.VII.1996, 28.IX.1999 (A. Freidberg).

#### **Acknowledgements**

I would like to thank the following colleagues for permission to examine material and loan of specimens: M. Dolgovskaya, M. Volkovich (Zoological Institute, St. Petersburg, Russia), V. Chikatunov and L. Friedman (Tel Aviv University, Israel).

Received 6 August 2001