

New Endomychid Species from Vietnam (Coleoptera)

By H. F. STROHECKER, Miami, U.S.A.

A small collection of Endomychidae from Vietnam has been sent to me for study through Drs. ZOLTÁN KASZAB and S. ENDRŐDI. The lot comprises but seven species, of which one is as yet undescribed.

Saula fuscicornis FAIRMAIRE Fig. 5.

Ann. Soc. Ent. France, ser. 6, 8, p. 378 (1888).

Lectotype male from Cochinchina in Paris Museum.

The collection now at hand contains material collected at Tanh liet, S.E. of Hanoi, 23. IV. 1966, Nr. 146, beaten from trees, Exp. GY. TOPÁL (13 specimens); Cuc phuong, Ninh binh, 5-18. V. 1966, Nr. 385, soil trap, Exp. GY. TOPÁL (1).

Stenotarsus peguensis GORHAM

Ann. Mus. Civ. Genova 36, p. 297 (1896).

Type material presumably in Genoa Museum. My own collection contains (ex JANSON) two males labeled "Palon (Pegu), L. Fea, VIII-XI-87" which are probably syntypes but determination label is by ARROW, who studied JANSON collection during his survey of Endomychidae of British India. I can find no differences between these two specimens and those from Vietnam.

Cuc phuong, Ninh binh, 3-10. V. 1966, Nr. 247, Exp. GY. TOPÁL (2 males, 2 unsexed).

Dexialia ovalis SASAJI

Etizenia, No. 43, p. 5, pl. I, fig. D-F, pl. III. (1970).

A single specimen of minute beetle corresponds well with SASAJI's description of *D. ovalis*. SASAJI's material was from Taiwan and additional material for dissection will be needed for adequate study of these small insects.

Dinh vy N.E. Hanoi, 15. IV. 1966, Nr. 60, beaten from bushes, Exp. GY. TOPÁL.

? *Bystodes taiwanensis* SASAJI

Etizenia, No. 43, p. 1, pl. I, fig. A-C, pl. II. (1970).

Another unique specimen of small beetle; my remarks about ?*D. ovalis* apply also to this insect.

Cuc phuong, Ninh binh, Nr. 385, soil trap, 5-18. V. 1966, Exp. GY. TOPÁL.

Amphisternus corallifer GERSTAECKER

Archiv Naturg. 23, p. 216 (1857).

Cuc phuong, Ninh binh, Nr. 380, 11-17. V. 1966, Exp. GY. TOPÁL (male).

Cuc-phuong Bong, jungle, detritus under bark, 23. XII. 1965, leg. T. Pócs (female).

Encymon eumera sp. n. Fig. 1.

Form long and little convex (for genus), deep black except femora, which have their middle portion orange-red. Length 7.7 mm. Antennae very slender, articles 3-8 each three times or more as long as wide at apex, 9 and 10 with disto-internal angle acute, 11 transverse, truncate. Pronotum with front angles narrowly rounded, sides feebly convergent behind mid-length, hind angles rectangular, basal sulcus deep, lateral sulci linear, extending $1/3$ length of disc. Elytra 3.5 times as long as

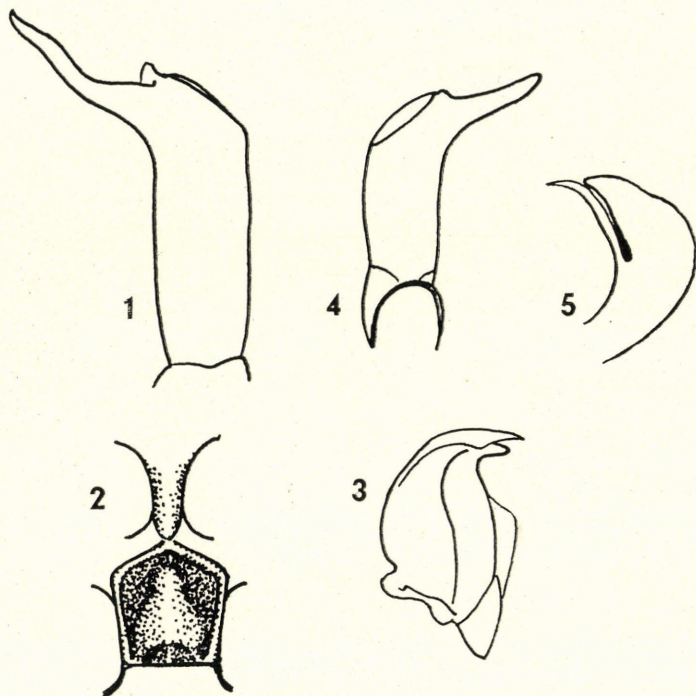


Fig. 1. *Encymon eumera* sp. n., aedeagus, dorsal view. — Figs. 2-4. *Indalmus pubescens* (ARROW) 2, pro- and mesosternum; 3, left mandible; 4, aedeagus of lectotype, ventral view. — Fig. 5. *Saula fuscicornis* FAIRMAIRE, lectotype, aedeagus, right side.

pronotum, gradually widened from base to mid-length, thence gradually convergent to apex, side margins rather wide, sutural region but little depressed near scutellum.

In my recent key to the species of *Encymon* (Pac. Insects 13, p. 28, 1971) *E. eumera* would be traced to *cinctipes* or to the *ferialis* group. From the species of the *ferialis* group it may be distinguished by its longer elytra, of but feebly arcuate outline. It is very similar to *E. cinctipes* but in *cinctipes* the elytra are abruptly rounded to apex; in *eumera* elytra are narrowed from mid-length. The aedeagus of *eumera* is distinctive.

Holotype male: Vietnam, Cuc-phuong Bong, jungle at lamp, 11-23. XII. 1965, leg. T. Pócs, in Hungarian Natural History Museum.

***Indalmus pubescens* (ARROW) Fig. 2-4.**

Fauna Br. India, Erotyl. etc., p. 311, fig. 55 (1925): *Engonius*.

A species of doubtful position. In structure of mesosternum, as well as that of aedeagus, it appears to me to have greater affinity with *Indalmus* than with *Engonius*. The mesosternal plate between mesocoxae is pentagonal, but little longer than wide, deeply excavate on each side with an incomplete central ridge which ends anteriorly in a rounded knob. The prosternal process is quite wide for the genus *Indalmus* but this condition is approximated in *I. malayanus* ARROW.

Cuc phuong, Ninh binh, 11-17. V. 1966, Nr. 344, netted in grasses, Exp. GY. TOPÁL (female).

Author's address: Prof. H. F. STROHECKER

Department of Biology

University of Miami

P.O. Box 9118

Coral Gables

Florida 33124, USA

