



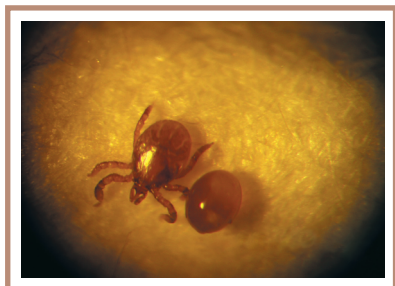
*Tineola bisselliella* Humm.



*Musca domestica* L.



*Blatella germanica* L.



*Ixodes ricinis* L.



*Aedes aegypti* L.



*Pediculus capitis* de Geer



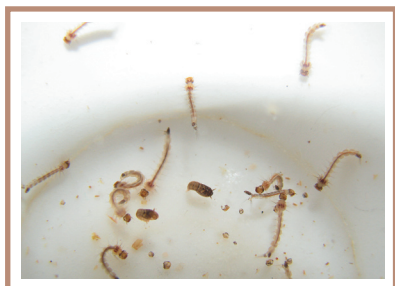
*Blatella germanica* L.



*Attagenus smirnovi*



*Blatella germanica* L. (ootheka)



*Aedes aegypti* L.



*Cimex lectularis* L.



*Monomorium pharaonis* L.



*Pediculus capitis* de Geer



*Tineola bisselliella* Humm.



*Attagenus simulans* Sols





*Aglais urticae*



*Coccinella septempunctata*



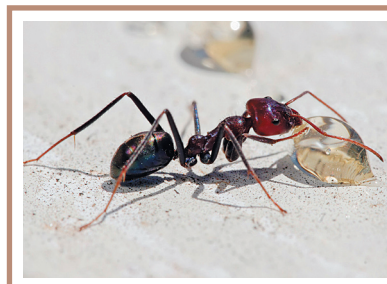
*Culex quinquefasciatus*



*Orchelimum erythrocephalum*



*Gryllotaipa gryllotaipa*



*Formica rufa*



*Vespula germanica*



*Araneus diadematus*



*Musca domestica*



*Apis mellifera*



*Locusta migratoria*



*Gryllus assimilus*



*Aeschna juncea*



*Phyllodroma ermanica*



*Bombus armeniacus*