

## A new species of the genus *Ovaliptila* (Orthoptera: Gryllidae: Gryllomorphinae) from Rhodes Island, Greece

## Новый вид рода *Ovaliptila* (Orthoptera: Gryllidae: Gryllomorphinae) с острова Родос в Греции

A.V. GOROCHOV\* & S. ALEXIOU

А.В. ГОРОХОВ, С. АЛЕКСИУ

A.V. Gorochov, Zoological Institute, Russian Academy of Sciences, 1 Universitetskaya Emb., St Petersburg 199034, Russia. E-mail: orthopt@zin.ru

S. Alexiou, Friedrich-Ebert Strasse 19, 49610, Quakenbrück, Niedersachsen, Deutschland; Athanasiou Diakou 18 A, 157 72, Zographou, Attiki, Greece. E-mail: sotirisalexiou@hotmail.com

*Ovaliptila rhodos* sp. nov. is described from Rhodes I., Greece. This species is most similar to *O. buresi* (Mařan) but distinguished from the latter species by some structures of the male genitalia.

С острова Родос в Греции описан *Ovaliptila rhodos* sp. nov. Этот вид наиболее похож на *O. buresi* (Маřан), но отличается от последнего вида некоторыми структурами гениталий самца.

**Key words:** crickets, taxonomy, Greece, Orthoptera, Gryllidae, Gryllomorphinae, *Ovaliptila*, new species

**Ключевые слова:** сверчки, таксономия, Греция, Orthoptera, Gryllidae, Gryllomorphinae, *Ovaliptila*, новый вид

## INTRODUCTION

The genus *Ovaliptila* Gorochov, 2006 was described for eight species distributed in the eastern part of Northern Mediterranean (including the coasts of Black Sea) and previously (mainly) attributed to the genus *Discoptila* Pantel, 1890; the latter generic name was probably proposed by its author for a subadult nymph of *Petaloptila* Pantel, 1890, the genus containing a group of species distributed in Iberian and possibly Apennine Peninsulas (Gorochov, 2006). For a long time, Greece was considered the center of the *Ovaliptila* diversity, because six species were recorded only from this country (Baccetti, 1992; Gorochov & Ünal, 2012). But in the latter publication,

this center was moved to Turkish Anatolia where eight species (including six species described in that paper as new to science) were discovered. The new congener described here does Greek and Turkish faunas of *Ovaliptila* almost equal to each other in the number of species; this circumstance possibly supports the idea about the existence (in the past) of the Balkan-Anatolian land which could be the homeland of this genus (Gorochov, 2016).

The type material of this new species is deposited in the following institutions: Zoological Museum, University of Athens, Greece (ZMUA); Zoological Institute, Russian Academy of Sciences, Saint Petersburg (ZIN). The specimens are in alcohol. The photographs of their morphological structures were made by a Leica M216 stereomicroscope.

\* Corresponding author

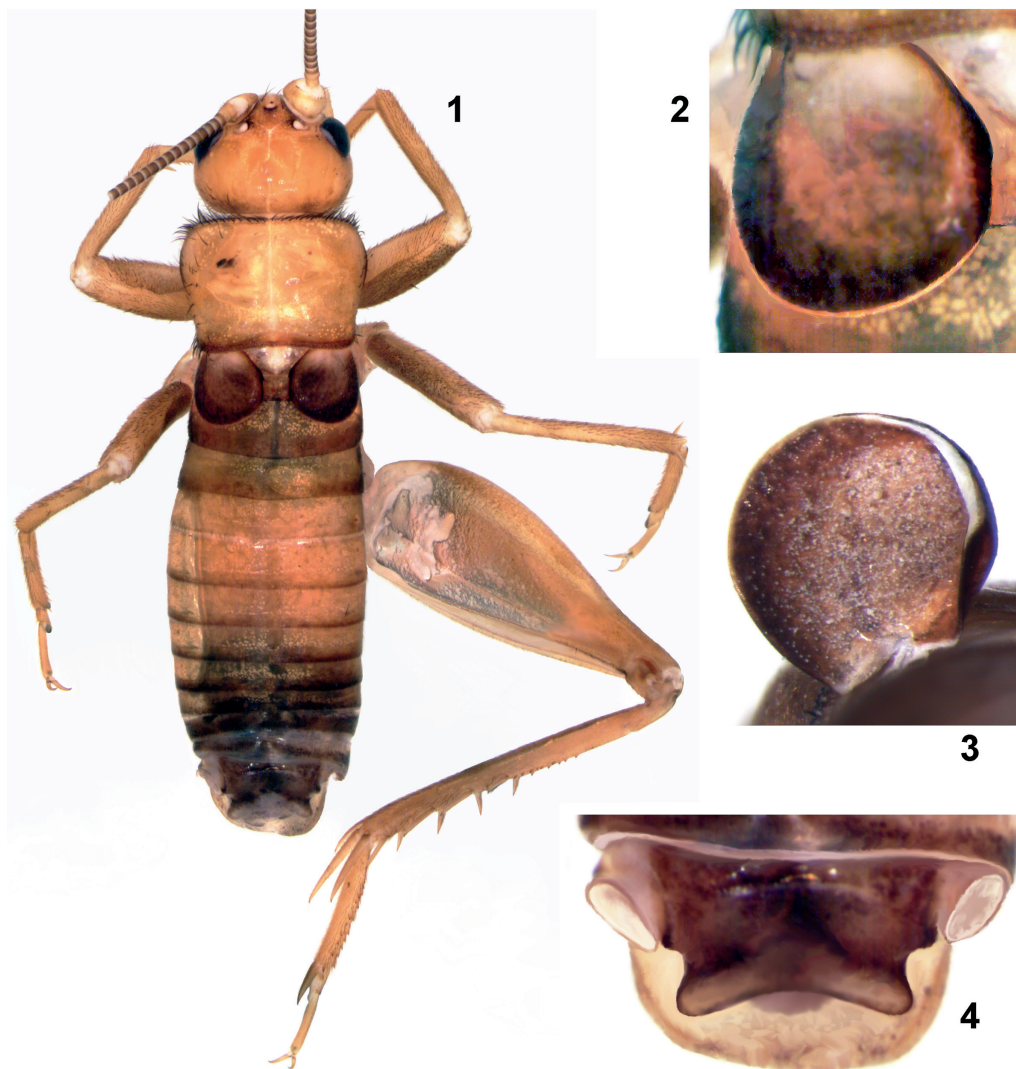
**TAXONOMIC PART**Tribe **PETALOPTILINI** Baccetti, 1959***Ovaliptila rhodos* sp. nov.**

(Figs 1–8, 13, 14)

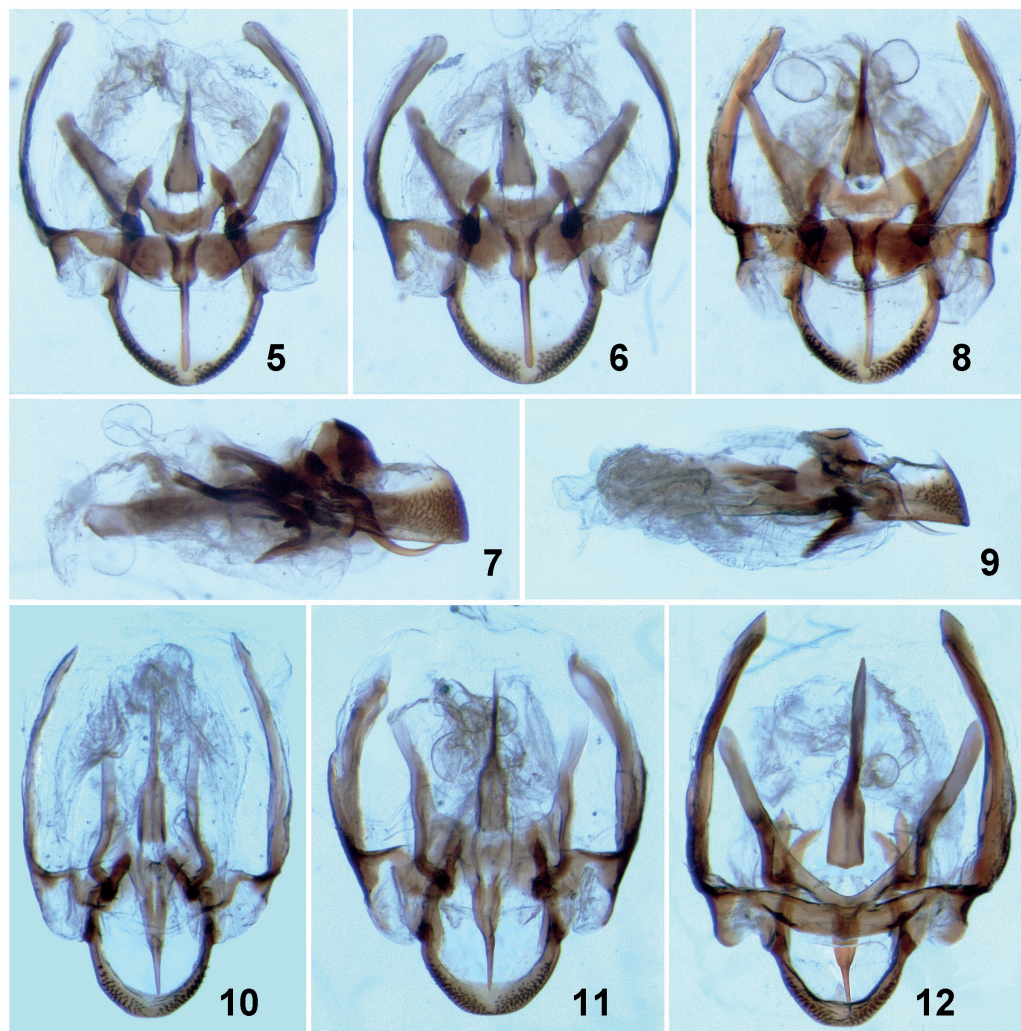
*Holotype*. Male, **Greece**, Rhodes ("Rhodos") I., Valley of Butterflies, 8.X.2016, S. Alexiou (ZMUA).

*Paratype*. Male, same data as for holotype (ZIN).

*Description*. Male (holotype). Body medium-sized for this genus. Colouration of body uniformly light brown but with blackish eyes, whitish ocelli, dark brown narrow and interrupted ring around each ocellus, almost yellowish scapes and lower half of head as well as thoracic venter and proximal parts of legs, brown lateral and distal parts of tegmina, light greyish brown most part of each antennal flagellum as well



**Figs 1–4.** *Ovaliptila rhodos* sp. nov., male. **1**, body from above; **2, 3**, left tegmen, dorsal (**2**) and ventral (**3**) surfaces; **4**, abdominal apex from above (cerci missing).

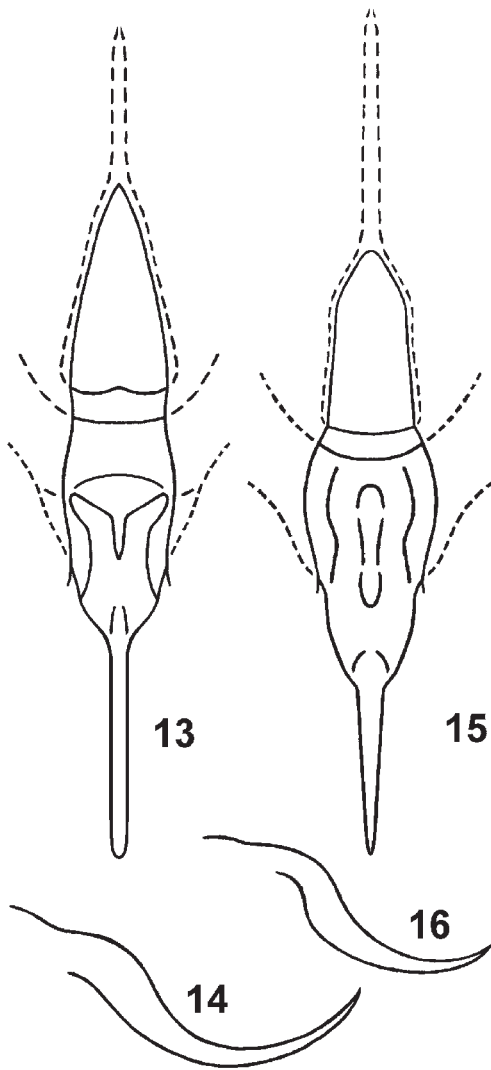


**Figs 5–12.** *Ovaliptila*, male. 5–8, *O. rhodos* sp. nov., holotype (5–7) and paratype (8); 9–12, *O. buresi* (Mařan), from western part of Anatolia (9, 10, in forest; 11, in cave) and from Crimea (12, in garden). Genitalia from above (5, 8, 10–12), from below (6) and from side (7, 9).

as metanotum and first abdominal tegite, and slightly darker (almost greyish brown) four posterior abdominal tergites and anal plate as well as paraprocts and cerci (Figs 1, 2, 4). External structure of body typical of *Ovaliptila*: head more or less semiglobular, with scape almost twice as wide as rostrum between antennal cavities, and with ocelli moderately large and round; pronotum with more or less parallel but slightly convex lateral edges of disc, with almost straight anterior and ventral edges, and with slightly

concave posterior edge (Fig. 1); tegmina scale-like (reaching almost middle of metanotum), round, not contacting with each other, with dorsal surface smooth, and with ventral surface simple (i.e. not smooth but almost flat and lacking any distinct relief or dense hairs; Figs 1–3); anal plate transversally rectangular but with a pair of rather short posterolateral lobules and wide and shallow notch between them (Fig. 4); genital plate approximately twice as long as anal plate, slightly elongated and with widely





**Figs 13–16.** *Ovaliptila*, structures of male genitalia (schematically). **13, 14, *O. rhodos* sp. nov.**; **15, 16, *O. buresi* (Mařan).** Rachis with formula and endoparameral median area from below (13, 15); posterior spine of rachis from side (14, 16).

rounded apex (Fig. 4). Genitalia (Figs 5–7) with epiphallic posterior part (having arcuate sclerite) rather wide and lacking posteromedian notch, with arcuate sclerite of this part moderately high and having very numerous short setae and small semimembranous spine-like median process located near posterior (dorsal) edge of this sclerite (Fig. 7), with moderately wide (long) trans-

versal sclerite of anterior epiphallic part having rather wide posteromedian notch, with endoparameres clearly fused with each other but almost not fused with rachial sclerite (endoparameres only contacting with latter sclerite; Figs 5, 6, 13), with rachis having very long and arcuate (in profile) posterior spine (this spine with parallel lateral edges; Figs 5–7, 13, 14), with anterior plate of rachis rather short and having slightly concave lateral edges (length of rachial spine almost equal to distance from posterior edge of this plate to anteromedian edge of endoparameres; Figs 5, 6, 13), and with formula strongly narrowing to moderately short anterior apodeme (Figs 5, 6, 13).

Variations. Genitalia with apodemes of endoparameres and of formula somewhat varied in length (Figs 5, 8).

Female unknown.

Length in mm. Body 11–12.5; pronotum 2–2.2; tegmina 1.2–1.3; hind femora 7.7–8.

**Comparison.** The new species is almost indistinguishable from *O. buresi* (Mařan, 1958), distributed in the territories around Black Sea and in the western part of Anatolia, in the colouration and external structure of body, and it is most similar to the latter species in the male genitalia; however, *O. rhodos* is distinguished from *O. buresi* by the wider posterior part of epiphallus lacking any posteromedian notch, the endoparameres clearly fused with each other and almost not fused with the rachial sclerite, the rachis with the longer and less S-shaped (in profile) posterior spine having parallel sides (*vs.* this spine is shorter, more S-shaped and gradually narrowing to the acute apex; for comparison see Figs 5–16) and with the shorter anterior (widened) plate having slightly concave (not convex) lateral edges (in *O. rhodos*, the rachial spine and distance from the posterior edge of rachial plate to the anteromedian edge of endoparameres are almost equal to each other in the length, but in *O. buresi*, this distance is approximately 1.5 times as long as the rachial spine; see Figs 13 and 15), and the formula more strongly narrowing to distinctly shorter

anterior apodeme (see Figs 5, 6, 8, 10–13, 15). From *O. wettsteini* (Werner, 1934) from Ikaria I., also having the S-shaped and spine-like rachis, the new species differs in the much longer posterior rachial spine (in *O. wettsteini*, it is distinctly shorter than even in *O. buresi*). And from all the other congeners, *O. rhodos* differs in the rachis distinctly S-shaped and spine-like (i.e. with almost needle-shaped distal part of rachis), in the anterior (transverse) epiphallallic sclerite clearly wider and more or less straight (not distinctly angular in the median part), or in the male tegmina without distinct cellular relief on the ventral surface.

**Remark.** Possibly, this species was recorded from Rhodes I. as *O. wettsteini* by Chopard (1967: “*Gryllomorpha wettsteini*”).

**Etymology.** The new species name is a transliteration of the Greek name of Rhodes Island (Ρόδος).

#### ACKNOWLEDGEMENTS

This work was performed in the frames of the state research project No. 01201351189 (Russian Federation) and is supported by the Russian Foundation for Basic Research (grant

No. 160401143). Thanks are due to the Municipality of Rhodes and to Lefteris Karagiannis, Manager of the Valley of Butterflies, for giving permission for nighttime visit to the protected Valley of Butterflies and offering assistance to our field research.

#### REFERENCES

- Baccetti B.** 1992. Notulae orthopterologicae. 50. Su alcuni ortotteroidei del Mediterraneo orientale. *Fragmenta Entomologica*, **23**(2): 247–276.
- Chopard L.** 1967. Gryllides. *Orthopterorum catalogus*, **10**: 1–211. Gravenhage: Uitgeverij Dr. W. Junk.
- Gorochov A.V.** 2006. A new genus of the tribe Petaloptilini (Orthoptera: Gryllidae: Gryllomorphinae) and partial revision of species included. *Far Eastern Entomologist*, **160**: 1–11.
- Gorochov A.V.** 2016. Systematic position of the *Hymenoptila* Chopard and notes on the geographic history of Gryllomorphinae (Orthoptera: Gryllidae). *Zoosystematica Rossica*, **25**(2): 216–225.
- Gorochov A.V. & Ünal M.** 2012. Review of Turkish crickets from the subfamily Gryllomorphinae (Orthoptera: Gryllidae). *Zoosystematica Rossica*, **21**(2): 28–59.

*Received 11 April 2017 / Accepted 28 April 2017*