

# **Biodiversität und Naturausstattung im Himalaya**

**- Biodiversity and Natural Heritage of the Himalaya -**

herausgegeben

von

Matthias Hartmann & Henryk Baumbach



Naturkundemuseum  
Erfurt

---

**Verein der Freunde & Förderer des Naturkundemuseums Erfurt e.V.**

**2003**

**Titelbild:** Vergletscherte Ostflanke des Saipal-Himal-Massivs (7025 m NN). Im Vordergrund das Tal des Kuwadi Khola (3600 m NN).  
Foto: H. Baumbach (03. Juli 2001)

**Zitiervorschlag:**  
**Gesamtwerk:** HARTMANN, M. & H. BAUMBACH (2003): Biodiversität und Naturlausstattung im Himalaya. - Verein der Freunde und Förderer des Naturkundemuseums Erfurt e.V., Erfurt, 389 S., XVI Farbtafeln.

**Einzelitel:** SCHMIDT, J. (2003): Revision der himalo-tibetischen Gruppe des *Bembidion nivicola* Andrewes, 1923 (Insecta: Coleoptera: Carabidae): Taxonomie, Phylogenie und Biogeographie. – in: HARTMANN, M. & H. BAUMBACH (Hrsg.): Biodiversität und Naturlausstattung im Himalaya. - Verein der Freunde und Förderer des Naturkundemuseums Erfurt e.V., Erfurt: 67-77.

**Bezugsadresse:** Verein der Freunde & Förderer des Naturkundemuseums Erfurt e.V.  
Große Arche 14, D-99084 Erfurt  
T.: +49 361 655 5680 / Fax: +49 361 6555689

ISBN 3-00-011451-3

Alle Rechte vorbehalten - Printed in Germany

Nachdruck oder Veröffentlichung in elektronischen Medien (Internet), auch auszugsweise, nur mit Genehmigung der Herausgeber.

**Herausgeber:** Dipl.-Biol. Matthias Hartmann & Dipl.-Biol. Henryk Baumbach, Verein der Freunde & Förderer des Naturkundemuseums Erfurt e.V.

**Druck:** Fehldruck, Erfurt  
**Satz:** Steffen Frömer, Ilmenau

Für Inhalt und Form der Beiträge sind die Autoren selbst verantwortlich.

# Coccinellidae (Insecta: Coleoptera) of Nepal from the collection of the Naturkundemuseum Erfurt

CLAUDIO CANEPARI

## Abstract

The paper lists 32 species of Coccinellidae (Coleoptera) from the collection of the Naturkundemuseum Erfurt. The following species are described as new for science: *Halyzia nepalensis* n. sp., *Nephus similincludens* n. sp., *Scymnus (Pullus) weigeli* n. sp..

*Calvia punctata*, *Lemnia (Artemis) circumusta*, *Micraspis allardi*, *Illeis confusa*, *Cryptogonus nitidus*, *Platynaspidium angulimaculatus*, *Rodolia sexnotata*, *Rodolia fumida*, *Rodolia marginata*, *Horniolus hisamatsui*, *Afissula merkli* are new for Nepal. *Propylea fallax* Khnzorian is synonymized with *Propylea dissecta* (Mulsant).

## Zusammenfassung

In der Arbeit werden 32 Arten der Coccinellidae (Coleoptera) aus der Sammlung des Naturkundemuseums Erfurt aufgeführt. Folgende Arten werden als neu für die Wissenschaft beschrieben: *Halyzia nepalensis* n. sp., *Nephus similincludens* n. sp., *Scymnus (Pullus) weigeli* n. sp..

*Calvia punctata*, *Lemnia (Artemis) circumusta*, *Micraspis allardi*, *Illeis confusa*, *Cryptogonus nitidus*, *Platynaspidium angulimaculatus*, *Rodolia sexnotata*, *Rodolia fumida*, *Rodolia marginata*, *Horniolus hisamatsui*, *Afissula merkli* wurden erstmals für Nepal nachgewiesen. *Propylea fallax* Khnzorian wird mit *Propylea dissecta* (Mulsant) synonymisiert.

**Key words:** Himalaya, Nepal, Coccinellidae, new species, new synonymy, new records, faunistics

Thanks to the courtesy of Andreas Weigel and Matthias Hartmann I had the opportunity to study a stock of Coccinellidae collected in Nepal during the years 1992-1997 and preserved in the Naturkundemuseum Erfurt.

As stated in previous studies the Coccinellidae of Nepal have a strong affinity with Chinese and Formosan fauna but on the other side they are rich of endemic species. With the present study the list of Coccinellidae of Nepal increases of 11 species new for Nepal and 3 new species.

## *Calvia quatuordecimguttata* (Linnaeus, 1758)

Nepal, Karnali Zone, Rara Lake 3000m, 27-29.6.95, lg. Ahrens & Pommeranz, 1 ex.

The specimen belongs to the *C. duodecimmaculata* (Gebler) form present in East Palearctic Region.

## *Calvia punctata* (Mulsant, 1850)

Nepal, Kathmandu, Thamel, Hotel Norbhu Linkha. LF 1300m NN, 27°22'N, 85°19'E, 27-29.V.1997, leg. Hartmann, 1 ex.

The Genus *Calvia* from the Indian subcontinent was recently revised by BOOTH (1997).

This species as the previous is very variably colored. Already recorded from North India, Pakistan, Afghanistan, Central Asia. New for Nepal.

## *Lemnia (Artemis) circumusta* Mulsant, 1850

Nepal, Annapurna Mts., Pokhara See 850m, Fluß-Mündung, 10.5.93, leg. Schmidt, 1 Ex.

Nepal, Surkhet Distr., NE Surkhet, 1400m, 27.V.1998, leg. W. Schawaller, 1 Ex. (coll. Staatliches Museum für Naturkunde Stuttgart).

Distribution: India, China, Taiwan, Vietnam, Thailand. New for Nepal.

## *Micraspis allardi* (Mulsant, 1866)

Nepal, Prov. Bheri, 40 km N Nepalganj, Babai River, 500m, 3.6.95, leg. A. Weigel, 2 exx.

Distribution: Afghanistan, India, China, Java, Sumatra, Borneo, Philippines, Indonesia. New for Nepal.

## *Micraspis inops* (Mulsant, 1866)

Nepal, Annapurna region, Pokhara-Seeufer, ca 900m NN, 9.10.92, leg. Weipert, 2 exx.

Distribution: India, Burma, China, Thailand, Vietnam, Indonesia, Nepal.

## *Propylea dissecta* (Mulsant, 1850)

*Propylea fallax* Iablokoff-Khnzorian, 1977 nov. syn.

Nepal, Kathmandu, NE, Gorkhana Park, 1300m NN, Bagmati River, 27°43'2"N, 85°22'6"E, 26.V.97, leg. Hartmann, 1 ex.

This species was confused for a long time with *Propylea japonica* (Thunberg, 1781) until MIYATAKE (1985) reevaluated it again. The male genital apparatus is very similar to *P. japonica* but the outline of elytra, characterised by two roundish periscutellar spots, shows the difference between the two species. Elytral drawing is represented by VANDEMBERG & GORDON (1991) and by IABLOKOFF-KHNZORIAN (1982) under the name of *Propylea fallax*.

## *Halyzia nepalensis* n. sp. (figs. 1, 2)

**Holotypus**, female: Nepal, Annapurna, Sikles Range, Nyauli Kharka, 21-24.4.96, leg. Schmidt. (Naturkundemuseum Erfurt).

**Paratypus**, Nepal, Manaslu Himal, below Bara Pokhari, 2500m, 2. IV. 1999, leg. Lau & Schmidt. (Coll. H. Ziegler) Form round oval, depressed. General color pale yellow; pronotum with two subtriangular, basilar spots and a sutural border reddish brown. Each elytra with four brown spots: the first between humeral callus and suture, the second on the external border at the half of the length, the third at two thirds of elytral length on the same longitudinal line of the first, the fourth very elongate between the second and the first and extending from humeral callus as far as four fifth of elytral length. Inferior part of the body, legs, antennae and mouthparts yellow.

Apex of clypeal border straight: Elytra with a large grooved border. Epipleura descending externally, reaching in parallel line the first abdominal segment and then gradually narrowing to the apex.

Prosternum with two converging carinae ending at two thirds

of its length. Mesosternum feebly emarginated anteriorly to receive prosternal process. Metasternum smooth, convex and with a median groove. Metacoxal lines describing a quarter of circle. Tibial spurs absent.

Punctures of pronotum small and separated by two to four times their diameter, microreticulation present in form of horizontal grooves. Punctures on elytra bigger than in pronotum but similarly separated, microreticulation evanescent.

Length 6.5 mm.

Female genitalia as in fig. 2.

***Illeis confusa* Timberlake, 1943**

Nepal, Prov. Bheri, Distr. Dailekh, Dailekh, S, Katia Khola, 800 m, 31.V.95, leg. A. Weigel, 1 ex.

Distribution: China, Vietnam. New for Nepal.

***Illeis* sp.**

Nepal, Kathmandu distr., Thamel, Hotel Norbu Linkha, leg. A. Weigel, 3 exx.

Nepal, Prov. Karnali, Distr. Kalikot, 30 km. S of Jubita, 26.V.95, leg. A. Weigel, 1 ex.

Nepal, Annapurna Mts., Marsyangdi Khola, Besi Sahar, 800 m, V-VI.91, lg. Schmidt, 1 ex.

The female specimens of *Illeis* are at present impossible to classify.

***Cryptogonus nepalensis* Bielawski, 1972**

Nepal, Annapurna Mts., Ghorepani 2800m, 14.6.1993, leg. Schmidt, 3 exx.; Nepal oc., Distr Jumla, Rimi-Chaurikot 2800-3000 m, 5.6.1997, leg. A.

Weigel, 1 ex.; id. Umg. Talphi, 2800-3000 m, Reisfelder, Weide, 21.6.97, leg. A. Weigel, 1 ex.; Nepal, Prov. Karnali, distr. Jumla, Lamri bis Jumla, 2400-2600 m, 29° 18'-16'N, 82° 16'-11'E, 22.6.97, leg. Hartmann, 2 exx. Nepal, Prov. Karnali, Distr. Kalikot, 3 km S Jubita, 1850 m, 26.5.1995, leg. A. Weigel 1 ex.

Species hitherto known only from Nepal.

***Cryptogonus nitidus* Kapur, 1948**

Nepal-Himalaya, Annapurna Mts., Kali Gandaki-Tal bei Dana, 1500 m, 12.6.1993, leg. Schmidt 2 exx.

Known from Burma; new for Nepal.

***Horniolus hisamatsui* Miyatake, 1976 (figs. 3, 4, 5)**

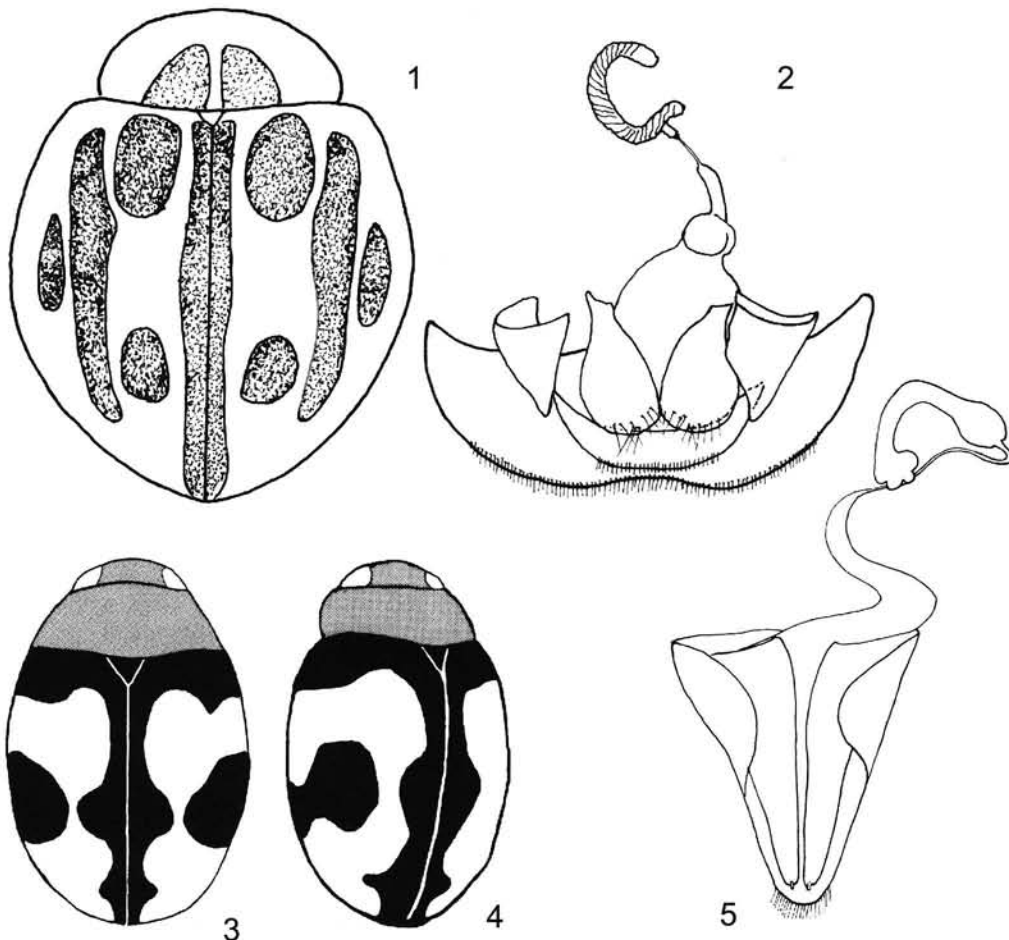
Nepal-Himalaya, Annapurna Mts, Sikles, 2000 m, NO Pokhara, 15.5.93, lg. Schmidt, 1 ex.

This species was described on a single female from Hong Kong. The elytral design of Miyatake corresponds to the specimen examined. New for Nepal.

***Nephus similincludens* n. sp. (figs. 6-12)**

**Holotypus**, male: Nepal oc., Prov. Karnali, Distr. Dolpo, Tripurakot: 29°04'49"N, 82°39'35"E, 2700 m, 31.5.97, leg. A. Weigel.

**Paratypes**: NEPAL, Prov. Karnali, Distr. Humla, 6 km W Simikot, 29°58'N, 81°49'E, terrace fields, 30-3200 m, 16-17.06.2001, leg. A. Kopetz, 1 ex.; NEPAL, Prov. Karnali, Distr. Humla, 6 km NW Simikot, Dandaphaya-Kermi, 2300-2800 m, 19.6.2001, leg. A. Kopetz KL/HF, 2 exx.; same data leg. A. Weigel, 2 exx.; NEPAL, Prov. Karnali, Distr. Humla,



figs. 1 - 5: *Halyzia nepalensis* n. sp, 1 - habitus, dorsal view; 2 - female genital apparatus. *Horniolus hisamatsui* Miyatake: 3 - habitus, dorsal view; 4 - habitus, oblique view. 5 - female genital apparatus.

12-5 km S-SE Simikot, Raya - Humla-Karnali valley, 2400-2100 m, 07.09.2001, rural landscape, leg. A. Kopetz, KL/HF, 2 exx.

Oval, slightly elongate. Pronotum black; elytra black with a discal spot in form of a C and apical border red; tibiae and tarsi red, profemora red-brown, meso and metafemora brown with apical third red; mouthparts red.

Frons square, interocular distance equal to 1.7 times the transverse diameter of the eye. Pronotum sides feebly curved; base bordered and feebly bisinuous. Elytra regularly curved on the sides with maximum width at the half of the body. Prosternal process large, bordered on the sides and with rare and big punctures. Metasternum convex, finely and sparsely punctured on the disc, with feeble median groove.

Metacoxal lines reaching four fifths of first abdominal sternum length; surrounded area with fine and dense punctures on the base becoming more rare and big apically.

Punctuation: on the head fine and superficial, distance between points equal to two to three times their diameter; on pronotum like in the head but with a little coarser punctures; on the elytra coarser, separated by one and a half to two times their diameter.

Male genitalia: median lobe slender and as long as paramera; apex of the siphon curved and with a short flagellum. Length 1.9 mm.

Derivatio nominis: elytral design recalling *Nephus includens* Kirsch.

***Scymnus (Neopullus) fuscatus Boheman, 1858***

Nepal, Kathmandu, N Bagmati, river Pashupatinath, 1300 m, 27.4.95, leg. A. Weigel, 1 ex.; Nepal-Himalaya, Annapurna Mts, Pokhara Sea Fluß-Mündung., 850 m, 10.5.93, lg. Schmidt, 2 ex.; Nepal, Annapurna Region, Pokhara, Phewa Lake, 800 m, 18.10.92, leg. A. Weigel, 1 ex.

***Scymnus (Pullus) bourdilloni Kapur, 1958***

Nepal, Prov. Bagmati, Kathmandu Valley S, Mt. Phulchoki 2300-2700 m NN, 25.VI.97, leg. Hartmann, 2 exx.; Nepal, Annapurna Region, Pokhara Seeufer, 900 m NN, 9.X.92, leg. J. Weipert, 1 ex.; Nepal, Annapurna Region, Umg. Dana, 1600 m NN, 3.X.92, leg. A. Weigel, 1 ex.

A typical himalayan species known only from Nepal and Sikkim.

***Scymnus (Pullus) besucheti Canepari, 1986***

Nepal, Annapurna region, Umg. Dana, 1600 m NN, 3.X.92, leg. A. Weigel, 2 exx.

Distribution: Western Bengal, Nepal.

***Scymnus (Pullus) posticalis Sicard, 1912***

Nepal, Kathmandu, Swayambunath, Tempelhügel, 24.VI.97, leg. A. Weigel, 1 ex.; Nepal, Prov. Karnali, Distr. Dolpa, 15 km E Hurikot, Jagdula Riv. 3000 m, 14.V.96, 1 ex.; Nepal, Kathmandu, NE, Gorkhara Park, 1400 m NN, Bagmati, 27°43'22"N, 85°22'59"E, 28.V.97, leg. A. Weigel, 1 ex.; Nepal, Gorkha Distr., Gorkha village 1100 m, 10/11.V.96, leg. Ahrens, Kulbe, Rulik; Nepal-Himalaya, Annapurna Mts., Madi Khola below Sikles, 1500 m, 4.8.95, leg. Schmidt, 1 ex.; Nepal, Prov. Bheri, Distr. Dailekh, 20 km N Dailekh 2400 m NN, 29.V.95, leg. M. Hartmann, 1 ex.

Distribution: China, Japan, Burma, India (Uttar Pradesh, Western Bengal, Sikkim), Nepal.

***Scymnus (Pullus) nepalensis Bielawski, 1971***

Nepal, Kathmandu, NE, Gorkhara Park, 1400 m NN, Bagmati, 27°43'22"N, 85°22'59"E, 28.V.97, leg. A. Weigel, 1 ex.; Nepal, Kathmandu N, Bagmati River, 1300 m NN, 6.VI.95, leg. M. Hartmann, 1 ex.; Nepal, Annapurna, Telbrung Danda, 2000 m, 15.6.97, leg. Schmidt, 2 ex.

This species seems to be endemic for Nepal where it is common.

***Scymnus (Pullus) mellinus Canepari, 1997***

Nepal-Himalaya, Annapurna Mts., Sikles, 2000 m, NO Pokhara, 15.5.93, lg. Schmidt, 2 exx.

Distribution: Nepal.

***Scymnus (Pullus) martensi Canepari, 1997***

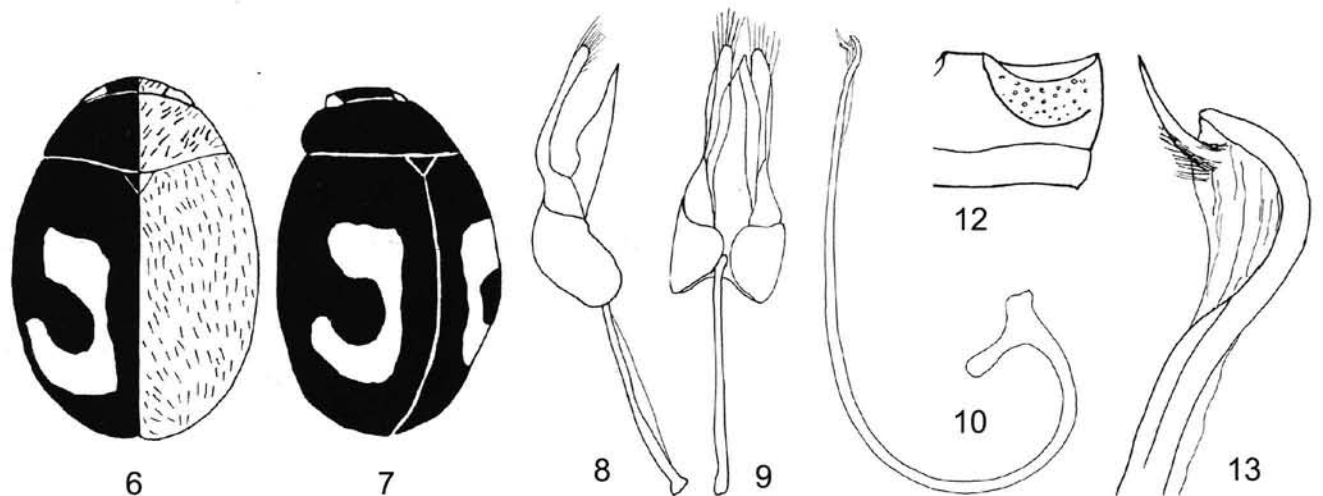
Nepal, Annapurna Region, Umg. Dana, 1600 m NN, 3.10.92, leg. Weigel, 1 ex.

This is the second specimen collected.

***Scymnus (Pullus) weigeli n. sp. (figs. 13-18)***

**Holotypus**, male: Nepal, Annapurna Region, Umg. Dana, 1600 m NN, 03.10.92, leg. A. Weigel.

Elongate oval, nearly parallel sided. Pronotum red with a large basal triangular black spot. Elytra black with apical fourth red. Profemora red with basal third black, meso and metafemora black, protibiae light red, meso- and metatibiae dark red. Tarsi and mouthparts red.



figs. 6 - 12: *Nephus similincludens* n. sp., 6 - habitus, dorsal view; 7 - habitus, oblique view; 8 - tegmen, lateral view; 9 - tegmen, ventral view; 10 - siphon, dorsal view; 11 - apex of the siphon; 12 - metacoxal line.

Frons square, large; pronotum sides nearly straight, base bordered and not sinuous.

Elytra with subparallel sides as far as three fourths of their length and then curved toward apex. Elytral epipleura ending at second abdominal segment level.

Punctures of the head coarse, separated by one and a half times their diameter; punctures on pronotum smaller than in the head, separated by four times their diameter; elytral punctation characterized by big punctures mixed with smaller ones separated by two times their diameter. Prosternum with two subparallel carinae and well developed prosternal wings. Mesosternum with coarse, regular punctures; metasternum punctation fine and sparse.

Metacoxal lines reaching two thirds of first abdominal segment length not uniformly punctured.

Male genitalia with paramera shorter than median lobe; siphon regularly curved and with a round and strong tip.

Length 2.1 mm.

Derivatio nominis: dedicated to its collector Andreas Weigel.

***Scymnus (Pullus) sp.***

Nepal, Prov. Kamali, Distr. Dolpa, Umg. Rimi, 3000 m, 16.V.1996, leg. A. Weigel, 1 ex.

***Scymnus nubilus* Mulsant, 1850**

Nepal-Himalaya, Annapurna Mts, Pokhara See, Fluß-Mündung. 10.5.93, leg. Schmidt, 2 exx.; Nepal oc., Prov. Bheri Nepalganj, Hotel, LF, 30.5.97, leg. A. Weigel, 1 ex.

A species with a wide diffusion, from Oriental to the Mediterranean Region and Africa.

***Rodolia marginata* Bielawski, 1960 ?**

Nepal-Himalaya, Annapurna Mts., Marsyangdi vall., Syangde, 1-1200 m, 25.8.95, leg. Schmidt, 1 ex.

A female that fits with the description and the figure of Bielawski and that I ascribe dubitatively to *R. marginata*.

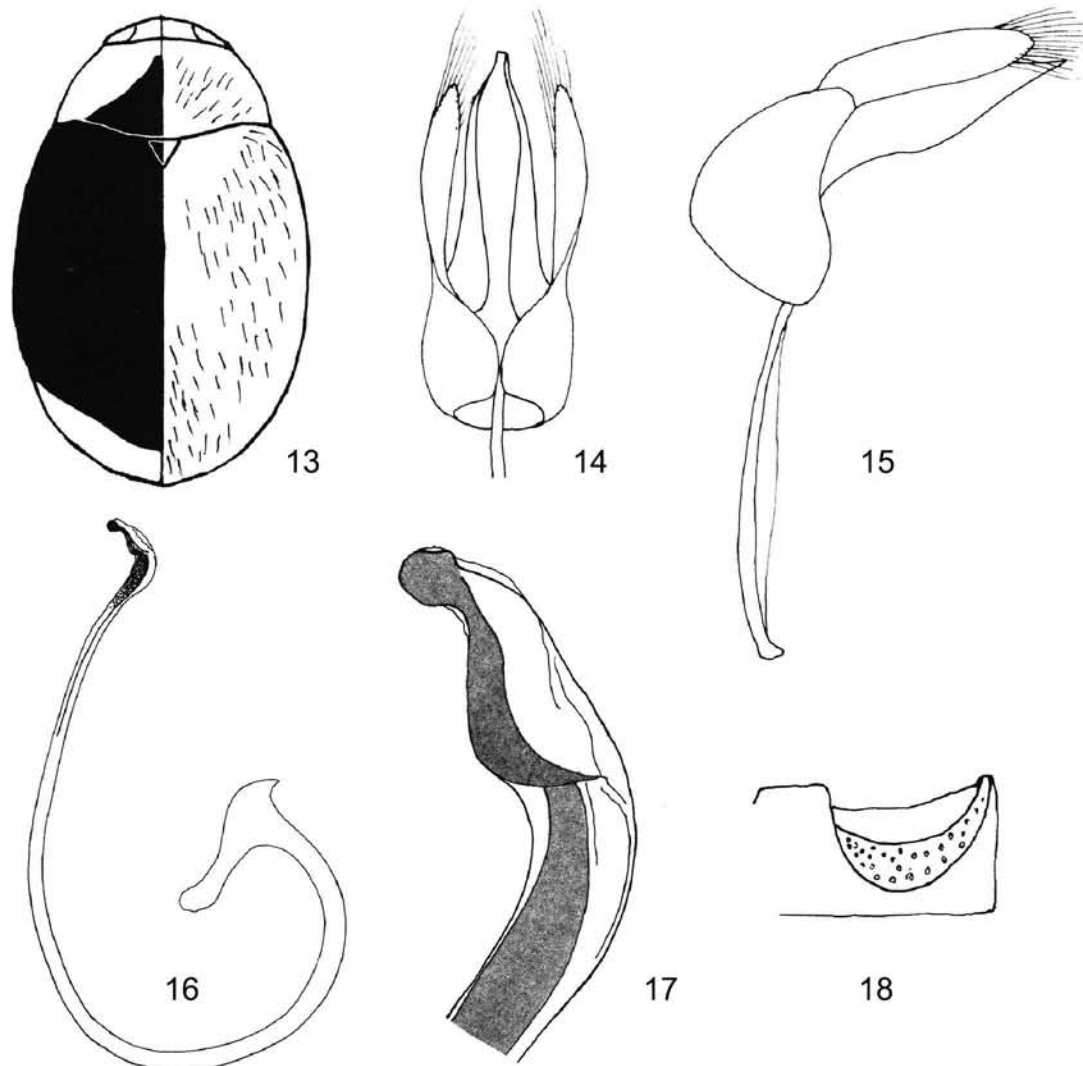
Distribution: Java. New for Nepal.

***Rodolia sexnotata* (Mulsant, 1850)**

Nepal, Kathmandu, Swayambhunath, Tempelhügel, 24.VI.97, leg. A. Weigel, 1 ex.

This species was changed by *Epilachna sexnotata* to *Rodolia* and was synonymized with *Rodolia guerini* by BOOTH & POPE (1989).

Distribution: South India. New for Nepal.



figs. 13 - 18: *Scymnus (Pullus) weigeli* n. sp., 13 - habitus, dorsal view; 14 - tegmen, ventral view; 15 - tegmen, lateral view; 16 - siphon, dorsal view; 17 - apex of the siphon; 18 - metacoxal line.

***Rodolia fumida* Mulsant, 1850**

Nepal, Prov. Bheri, 40 km N Nepalganj, Babai River, 500 m, 5.4.95, leg. A. Weigel 1 ex.

Distribution: India, Burma, Sri Lanka, Vietnam. New for Nepal.

***Platynaspidius angulimaculatus* (Mader, 1938)**

Nepal, Annapurna region, Umg. Bhulbhule 870 m NN, 19.IX.92, leg. A. Weigel, 1 ex.; Thailand, Prov. Chonburi, 5 km E Pattaya, Elefant camp, 30.I.95, leg. A. Weigel, 1 ex.

Distribution: China, Thailand. New for Nepal.

***Afissula rana* Kapur, 1958**

Nepal, Annapurna Region, Umg. Bhulbhule, 870 m NN, 19.IX.92, leg. A. Weigel, 1 ex.

Distribution: Nepal, China.

***Afissula mysticoides* (Sicard, 1912)**

Nepal, 15 km S Kathmandu, Godawari-Phulchoki, 1800-2200 m, 25.VI.97, leg. A. Weigel, KL, 2 exx.

Distribution: India, Nepal, China.

***Afissula merkli* Jadwiszczak, 1989**

Nepal, Annapurna Mts., S Lamjun Himal, W-slope Taunja Danda, 2400 m, 6.8.95, leg. Fabrizi, Jäger, Schmidt, 2 exx.

Described from West Bengal. New for Nepal.

***Afidentula manderstjernae* (Mulsant, 1853)**

Nepal-Himalaya, Annapurna Mts., Madi Khola below Sikles, 1500 m, 4.8.95, leg. Schmidt, 1 ex.

Distribution: Northern India, Northern Bengal, Burma, China, Nepal.

***Serangium* sp.**

Nepal, Prov. Bagmati, Kathmandu Valley S, Mt. Phulchoki 2300-2700 m NN, 25.VI.97, leg. Hartmann, 1 ex.

A female that I could not determinate.

**References**

- BOOTH, R. G. (1997): A review of the species of *Calvia* (Coleoptera: Coccinellidae) from the Indian subcontinent, with description of two species. - *Journal of Natural History* **31**: 914-934.
- & R. D. POPE (1989): A review of the type material of Coccinellidae (Coleoptera) described by F. W. Hope, and by E. Mulsant in the Hope Entomological Collections, Oxford. - *Entomologica Scandinavica* **20** (3): 343-370.
- BIELAWSKI, R. (1971): Über Coccinellidae (Coleoptera) aus Nepal. - *Khumbu Himal* **1**: 1-9.
- (1972): Die Marienkäfer (Coleoptera: Coccinellidae) aus Nepal. - *Fragm. Faun.* **XVIII** (16): 283-312.
- CANEPARI, C. (1986): Su alcuni Coccinellidi dell' India e Nepal settentrionale del Museo di Storia naturale di Ginevra (Coleoptera Coccinellidae). - *Revue suisse Zool.* **93** (1): 21-36.
- (1997): Coccinellidae (Coleoptera) from the Nepal Himalayas. - *Stuttgarter Beitr. z. Naturkunde, Serie A (Biologie)*, **565**: 1-65.
- IABLOKOFF-KHNZORIAN, S. M. (1982): Les Coccinelles. Coléoptères-Coccinellidae. - *Soc. Nouv., Paris*, 568 pp., 104 figg.
- JADWISZCZAK, A. (1989): Studies on the Oriental Epilachninae (Coleoptera, Coccinellidae). - *Polskie Pismo Ent.* **58**: 733-744.
- KAPUR, A.P. (1958): Coccinellidae of Nepal. - *Rec. Indian Mus.* **53**: 309-338.
- (1949): On the Indian Species of *Rodolia* Mulsant (Coleoptera-Coccinellidae). - *Bull. Entomol. Research* **39**: 531-538.
- MİYATAKE, M. (1967): Notes on some Coccinellidae from Nepal and Darjeeling District of India (Coleoptera). - *Trans. Shikoku Ent. Soc.* **9** (3): 69-78.
- (1985): Coccinellidae collected by the Hokkaido University Expedition to Nepal Himalaya, 1968 (Coleoptera). - *Ins. matsum. n.s.* **30**: 1-33.
- VANDEMBERG, N. & R. D. GORDON (1991): Farewell to *Pania* Mulsant (Coleoptera: Coccinellidae); a new synonymy of *Propylea* Mulsant. - *Coccinella* **3** (2): 30-35.

**Authors:** Dr. Claudio Canepari  
Via Venezia 1  
I-20097 San Donato Milanese  
Italia  
ccanepari@libero.it