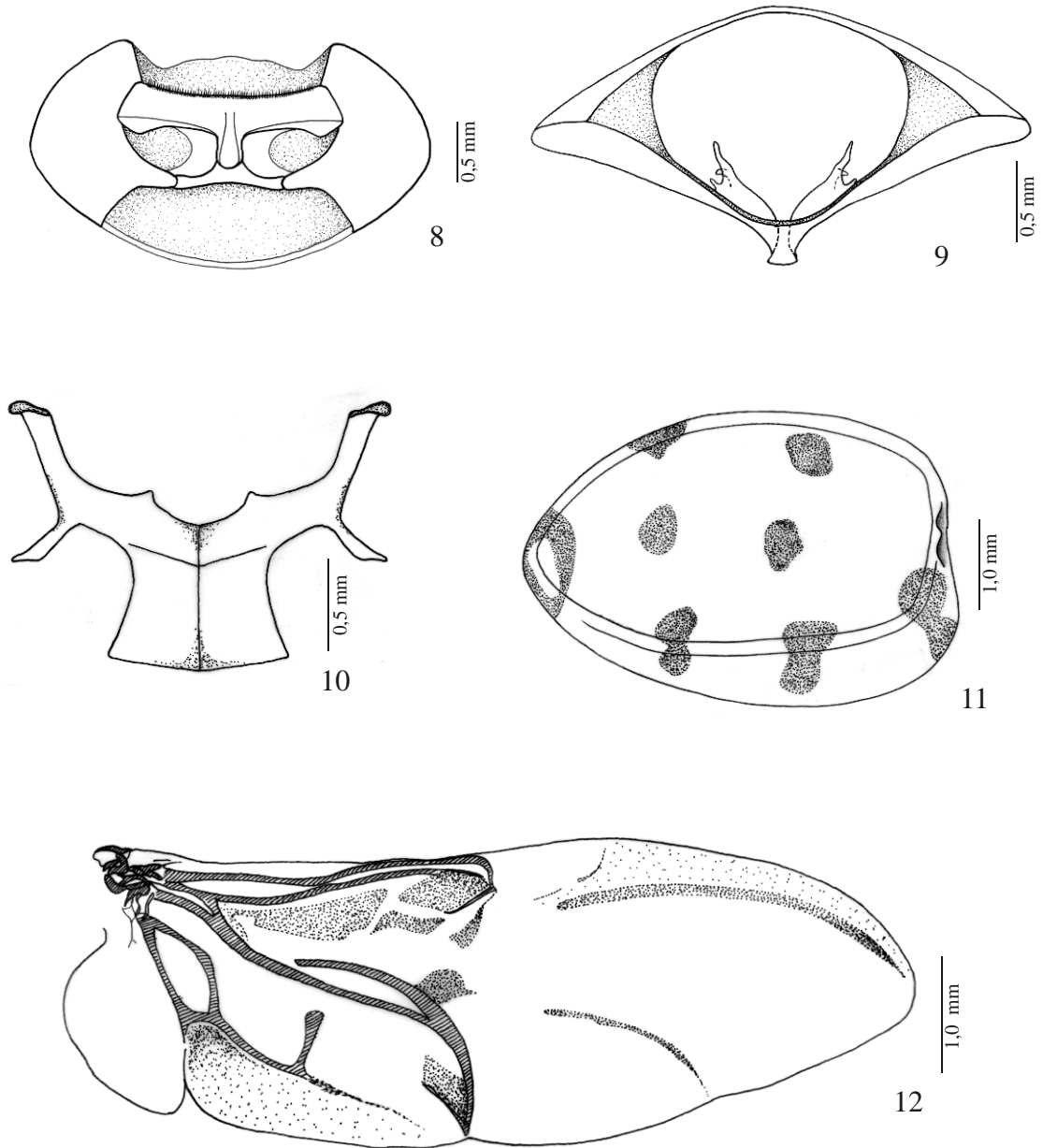
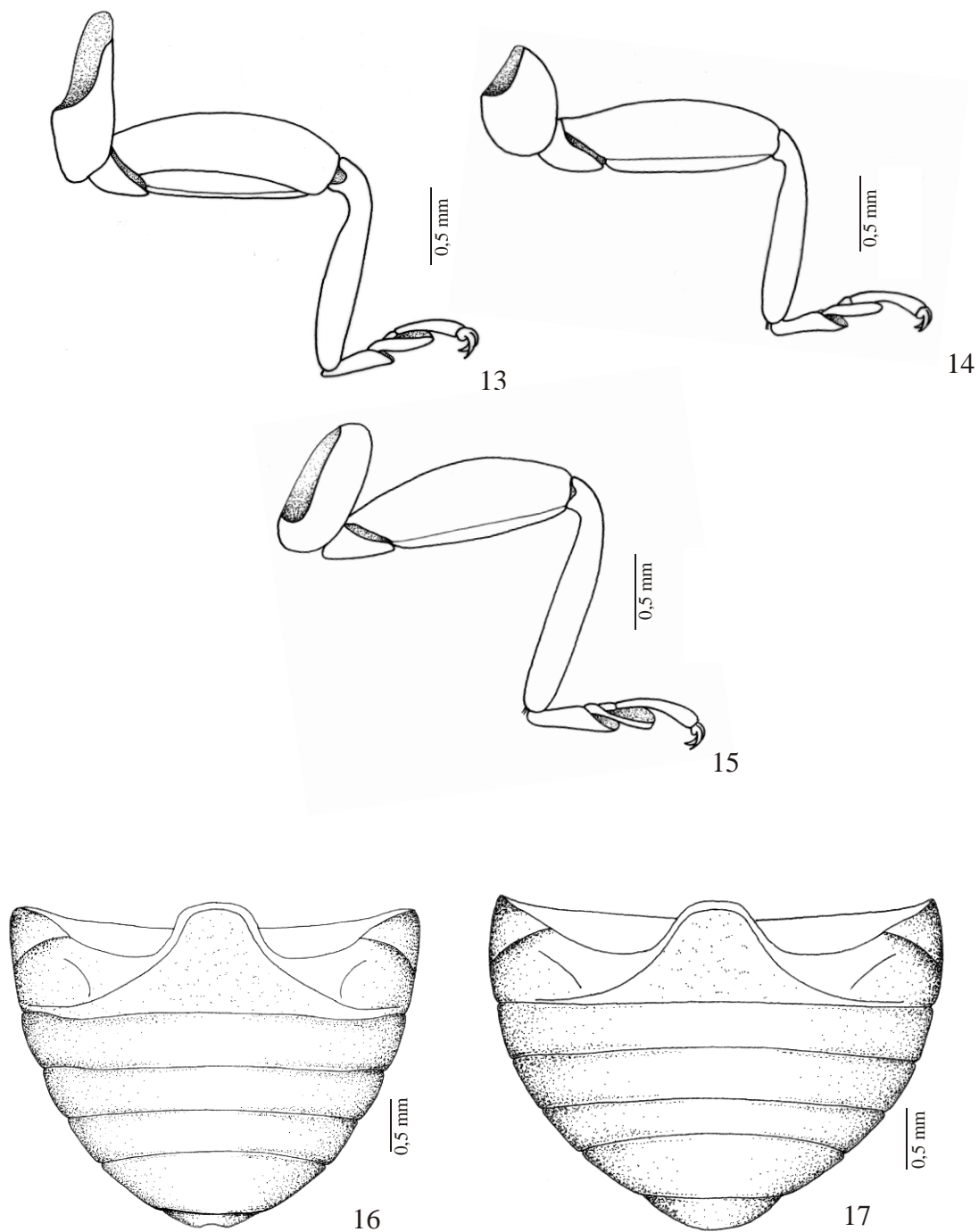


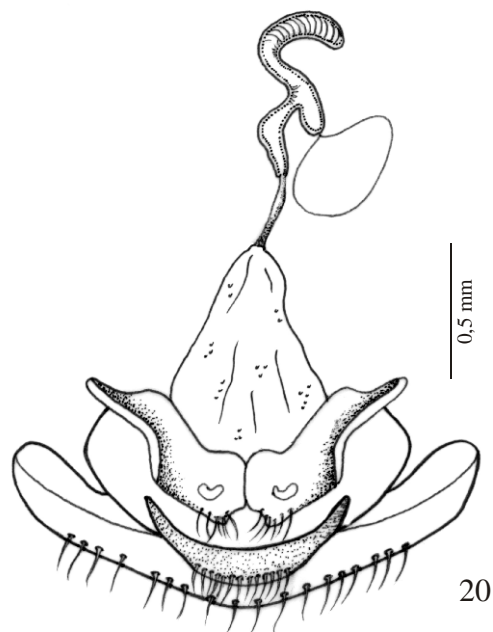
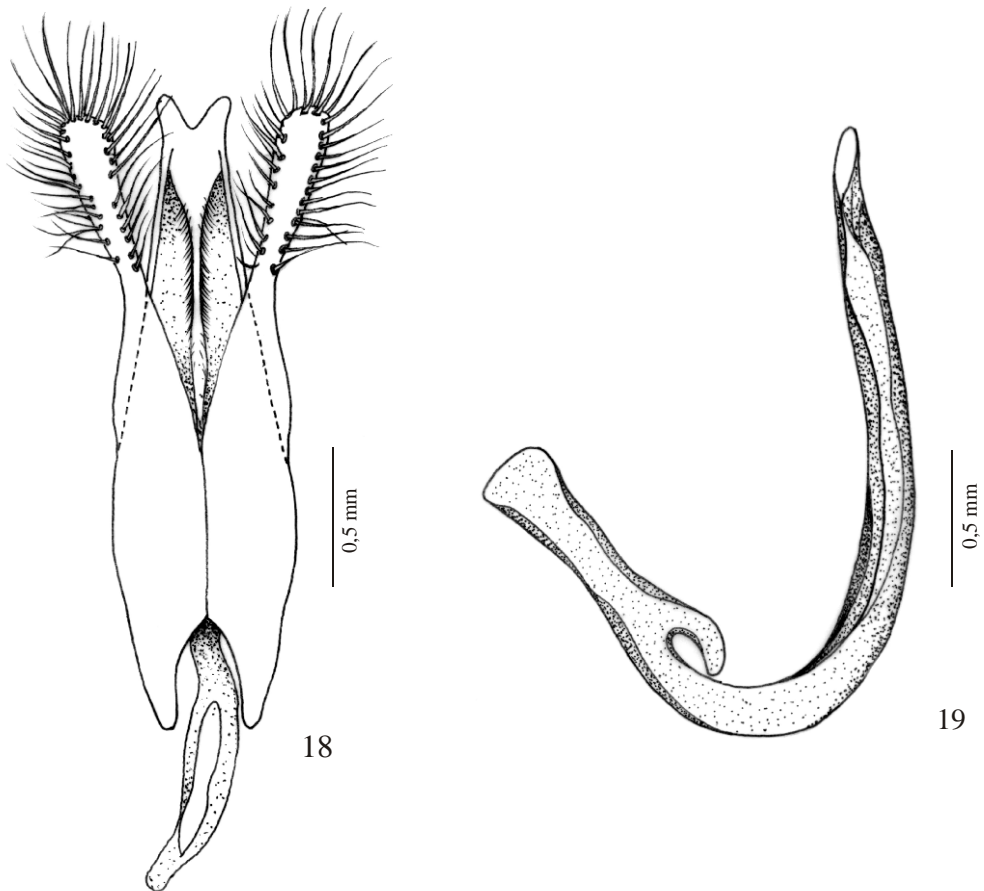
**Figuras 1 - 7.** *Neda callispilota* (Guérin-Méneville, 1844): (1) vista dorsal; (2) cabeça, vista frontal, macho; (3) labro; (4) mandíbulas; (5) maxila; (6) lábio; (7) antena.



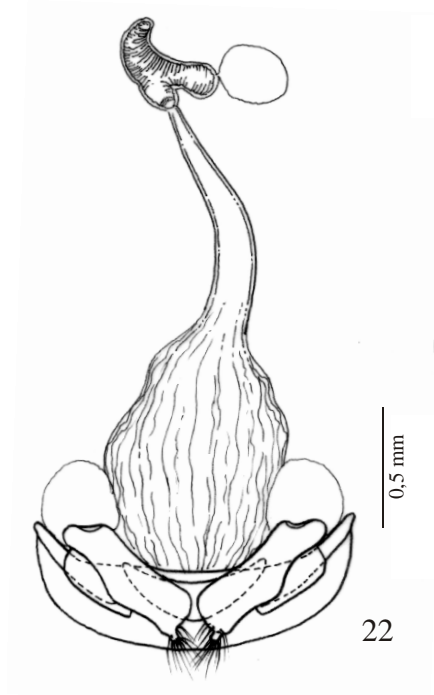
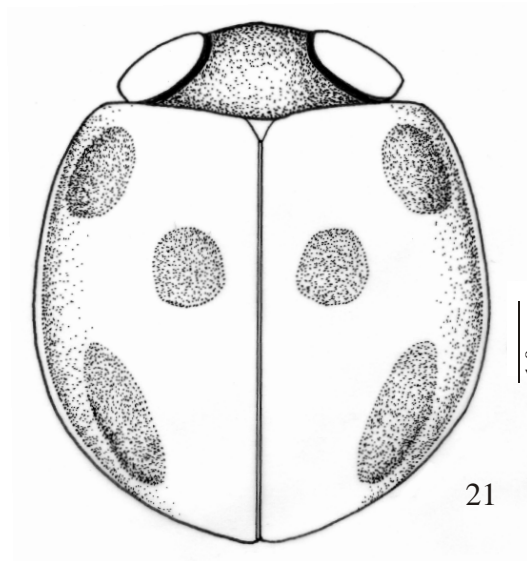
**Figuras 8 - 12.** *Neda callispilota* (Guérin-Ménéville, 1844): (8) protórax ventral; (9) proendosternito; (10) metendosternito; (11) élitro ventral; (12) asa.



**Figuras 13 - 17.** *Neda callispilota* (Guérin-Méneville, 1844): (13) perna anterior; (14) perna média; (15) perna posterior; (16) abdome do macho, vista ventral; (17) abdome da fêmea, vista ventral.



**Figuras 18 - 20.** *Neda callispilota* (Guérin-Méneville, 1844): genitália do macho: (18) tégmen, (19) sifão; (20) genitália da fêmea.



**Figuras 21 - 22.** *Neda bistrisignata* (Mulsant, 1850) **comb. rest.:** (21) vista dorsal; (22) genitália da fêmea.



23



24



26



25

**Figuras 23 - 26.** *Neda bistrisignata* (Mulsant, 1850) **comb. rest.**, lectótipo: (23) vista dorsal; (24) vista lateral; (25) vista frontal, fêmea; (26) etiquetas.





**Figuras 27 - 28.** (27) *Neda callispilota* (Guérin-Méneville, 1844); (28) *Neda tredecimsignata* (Mulsant, 1850)