

UNION DES ENTOMOLOGISTES BELGES
Sous le Haut Patronage de S.M. le ROI

LAMBILLIONEA

REVUE INTERNATIONALE D'ENTOMOLOGIE



108ème ANNEE

N°4 DECEMBRE 2008 tome I

BRUXELLES (Tervuren)

**A NEW SUBSPECIES
OF *CARABUS (MORPHOCARABUS) MESTSHERJAKOVI* LUTSHNIK, 1924
FROM CENTRAL SIBERIA
(Coleoptera, Carabidae)**

Dmitry OBYDOV *

* Timiryazev's State Museum of Biology, 123242, Malaya Gruzinskaya str. 15, Moscow, Russia. E-mail: obydovdv@mtu-net.ru

Résumé. Dans cet article une nouvelle sous-espèce de *Carabus (Morphocarabus) mestsherjakovi*: *Carabus (Morphocarabus) mestsherjakovi minusinensis* ssp. n. est décrite de Sibérie Centrale ; ses caractères distinctifs sont énoncés.

Abstract. A new subspecies of *Carabus (Morphocarabus) mestsherjakovi*: *Carabus (Morphocarabus) mestsherjakovi minusinensis* ssp. n. is described from Central Siberia. Diagnostic data are given.

Key words: Coleoptera, Carabidae, *Carabus (Morphocarabus) mestsherjakovi*, new subspecies, Central Siberia.

Introduction

Carabus (Morphocarabus) mestsherjakovi Lutshnik, 1924 inhabits huge territory from high mountains of Southern Siberia up to northern tundra, forming few well distinguished subspecies. During work with the collection of the Zoological Museum of Moscow Lomonosov State University one specimen of *C. mestsherjakovi* has been found. This specimen differ from all known for today subspecies of *C. mestsherjakovi* and in my opinion deserving subspecific rank.

The descriptions of *Carabus (Morphocarabus) mestsherjakovi minusinensis* ssp. n. is given below.

***Carabus (Morphocarabus) mestsherjakovi minusinensis* ssp. n.** (Fig.1).

Holotype: female, Central Siberia, distr. Minusinsk, Th. Lukjanovich leg. (in the collection of the Zoological Museum of Moscow Lomonosov State University, Moscow).

Description.

Body length is 18.5 (including mandibles), width 7.6 mm.

Head not thickened, ratio width of pronotum/width of head 1.88; eyes strongly convex; mandibles long, strongly curved and sharply pointed at the apex; retinaculum of the right and left mandibles bi-dentate strongly prominent; surface of mandibles smooth. Frontal furrows deep and long, inside anteriorly coarsely-wrinkled, posteriorly nearly smooth. Frons, vertex and neck with sparse coarse punctures, laterally vertex with few coarse wrinkles. Labrum wider than clypeus, moderately notched, without lateral setae. Antennae long, protruding beyond the base of pronotum by four apical segments; palpi slightly dilated; penultimate segment of the maxillary palpi equal to last segment; penultimate segment of the labial palpi with two setae. Mentum tooth equal to lateral lobes; submentum with four setae.

Prothorax relatively narrow, flattened; ratio width/length 1.53. Pronotum coarsely-punctured, laterally and posteriorly with sparse coarse wrinkles. Median longitudinal line distinct; basal foveae deep, inside coarsely-wrinkled. Sides of pronotum broadly margined; lobes of hind angles short, evenly rounded and slightly bent downwards. Lateral margin with two setae: one setae at about middle and one setae near hind angle.

Elytra oblong-oval, widest at about middle; shoulders prominent; sides of elytra broadly margined. Ratio length/width 1.60; ratio width of elytra/width of pronotum 1.56. Elytral sculpture: tertiary elytral interspaces integral, slightly convex, primary and secondary elytral interspaces about equally developed, often conjugated transversely. Primary elytral foveoles distinct; striae coarsely punctured.

Abdominal sternites smooth, metepisternum with sparse fine punctures, not longer than its width; sternal sulci absent. Legs long.

Body green; four basal antennae segments red, legs and palpi completely red.

Differential diagnosis. The new subspecies closely related to nominotypical subspecies (Fig.2) but differs from *Carabus mestsherjakovi mestsherjakovi* by following characters: labrum without lateral setae; frons, vertex and neck with less rough sculpture; frontal furrows deeper and longer; last segment of maxillary palpi less dilated; antennae longer, protruding beyond the base of pronotum by four apical segments, four basal antennae segments red (while at *Carabus mestsherjakovi mestsherjakovi* antennae shorter, protruding beyond the base of pronotum by three apical segments; four basal antennae segments brown or reddish brown); mentum tooth equal to lateral lobes; submentum with four setae (at *Carabus mestsherjakovi mestsherjakovi* mentum tooth shorter than lateral lobes; submentum with two setae). Pronotum less convex, sides of pronotum much broadly margined, lobes of hind angles shorter. Elytra longer; tertiary elytral interspaces less convex, primary and secondary elytral interspaces about equally developed, often conjugated transversely (while at *Carabus mestsherjakovi mestsherjakovi* primary elytral interspaces interrupted into short links, tertiary elytral interspaces integral, strongly convex, secondary reduced). Legs longer; legs and palpi completely red.

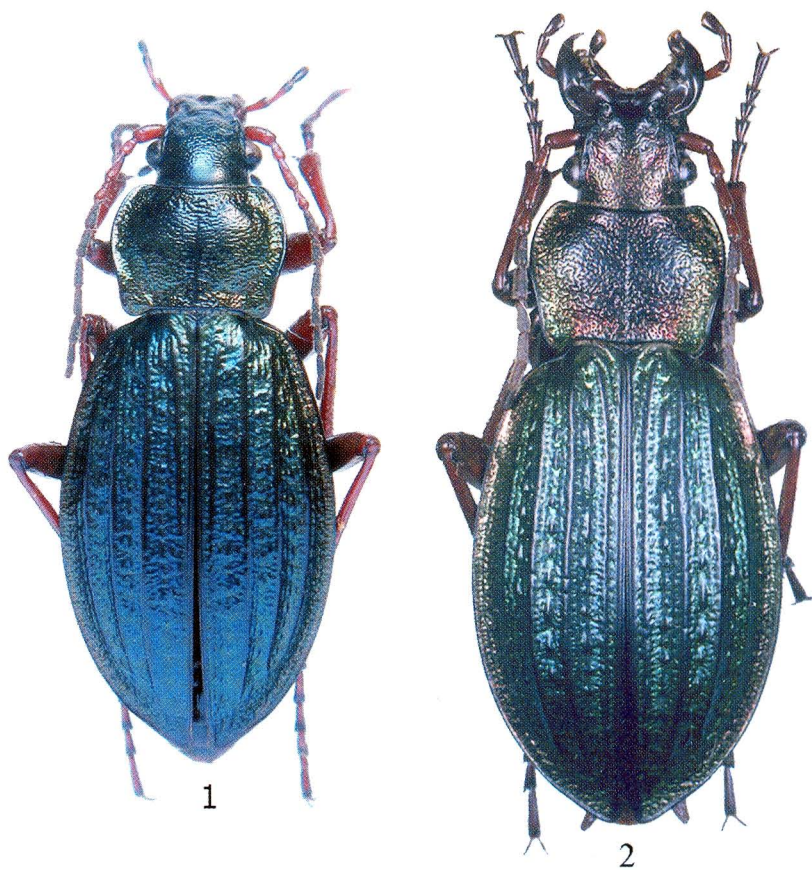
Distribution. Minusinsk environs.

Acknowledgements

I wish to express my hearty gratitude to Dr. Nikolay B. NIKITSKY (Zoological Museum of Moscow Lomonosov State University, Moscow) who kindly loaned material for studies.

References

- BRINEV A. E., 2002. [To subspecific structure of *Carabus (Morphocarabus) mestsherjakovi* (Coleoptera, Carabidae)]. *Zoological Journal*, T.81, N.1: 34-52. [in Russian].
LUTSHNIK W. N., 1924. [A descriptive Catalogue of the Geodephagos Coleoptera of Minusinsk Region, I]. *Annual edition of the State Museum named after N.M. Martjanov*, in Minusinsk, V.2, Minusinsk: 65pp [in Russian].



Carabus (Morphocarabus) mestsherjakovi minusinensis ssp. n. (Fig.1).

Carabus mestsherjakovi mestsherjakovi (Fig. 2)