

# Catalogue of Palaearctic Coleoptera

VOLUME 2/1

The titles published in this series are listed at [brill.com/cpc](http://brill.com/cpc)

# Hydrophiloidea – Staphylinoidea

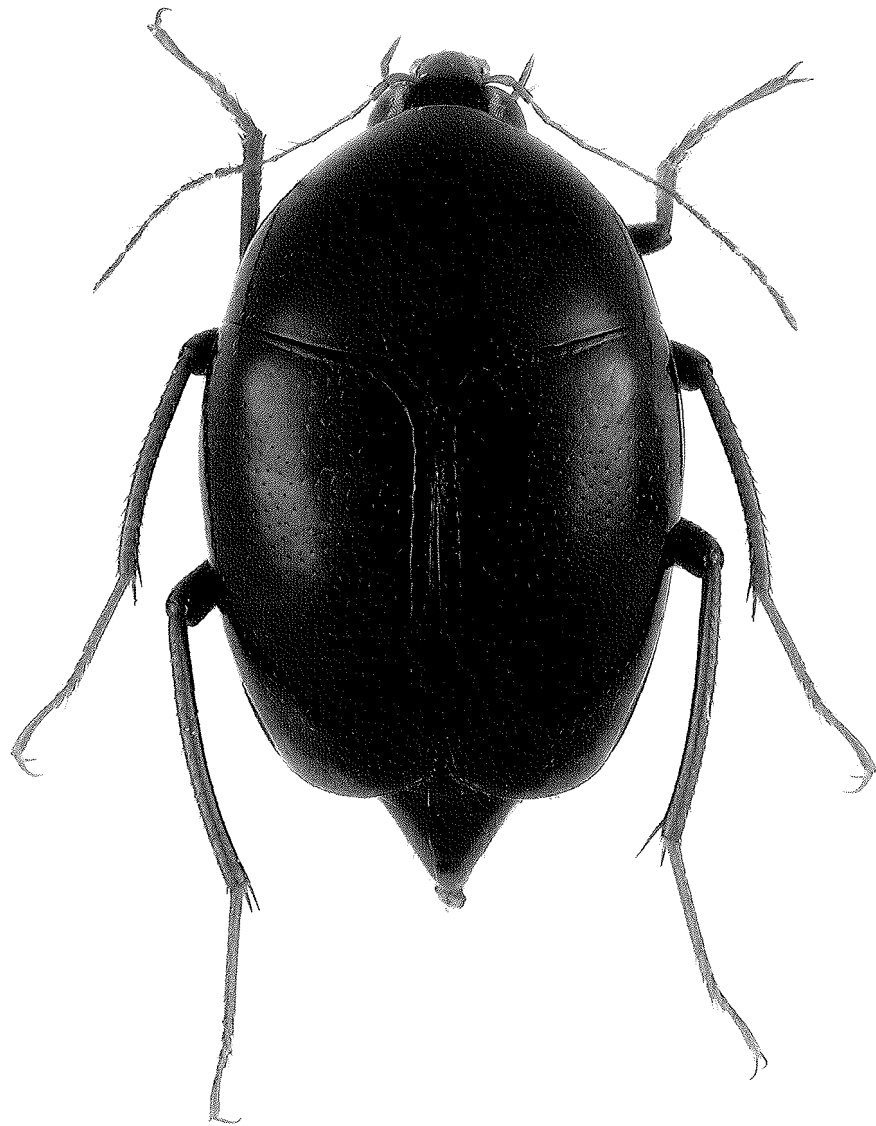
*Revised and Updated Edition*

VOLUME 1

*Edited by*

I. Löbl

D. Löbl



*Pseudobironium confusum* Löbl & Tang, 2013



BRILL

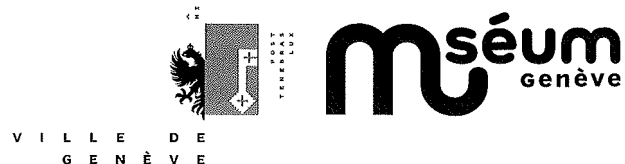
LEIDEN | BOSTON

Cover illustration: *Pseudobironium confusum* Löbl & Tang, 2013, photo Liang Tang.

Date of Publication: 28 August 2015

The index of the species-group names is available on site of Koninklijke Brill NV, Leiden (<http://booksandjournals.brillonline.com/>).

The publication of the work was supported by the "Muséum de la Ville de Genève", Geneva, Switzerland.



Library of Congress Cataloging-in-Publication Data

Catalogue of Palaearctic Coleoptera / edited by I. Löbl, D. Löbl. -- Revised and updated edition.  
volumes cm

Includes bibliographical references and index.

Contents: -- volume 2. Hydrophiloidea-Staphylinoidea

ISBN 978-90-04-28992-5 (vol. 2 : hardback : alk. paper) -- ISBN 978-90-04-29685-5 (vol. 2 : e-book : alk. paper)

1. Beetles--Eurasia. 2. Beetles--Africa, North. I. Löbl, Ivan II. Löbl, D. (Daniel)

QL593.E83C38 2015

595.76095--dc23

2015018977

This publication has been typeset in the multilingual "Brill" typeface. With over 5,100 characters covering Latin, IPA, Greek, and Cyrillic, this typeface is especially suitable for use in the humanities. For more information, please see [www.brill.com/brill-typeface](http://www.brill.com/brill-typeface).

ISBN 978-90-04-28992-5 (hardback set)

ISBN 978-90-04-30276-1 (hardback, vol. 1)

ISBN 978-90-04-30277-8 (hardback, vol. 2)

ISBN 978-90-04-29685-5 (e-book)

Copyright 2015 by Koninklijke Brill NV, Leiden, The Netherlands.

Koninklijke Brill NV incorporates the imprints Brill, Brill Hes & De Graaf, Brill Nijhoff, Brill Rodopi and Hotei Publishing.

All rights reserved. No part of this publication may be reproduced, translated, stored in a retrieval system, or transmitted in any form or by any means, electronic, mechanical, photocopying, recording or otherwise, without prior written permission from the publisher.

Authorization to photocopy items for internal or personal use is granted by Koninklijke Brill NV provided that the appropriate fees are paid directly to The Copyright Clearance Center, 222 Rosewood Drive, Suite 910, Danvers, MA 01923, USA.

Fees are subject to change.

This book is printed on acid-free paper.



## Contents

### VOLUME 1

Introduction IX

Taxonomic Information XII

Distributional Information XIV

Bibliographic Information XX

Acknowledgements XXII

Editors and Authors XXIII

New Nomenclatural and Taxonomic Acts, and Comments 1

Catalogue 25

Helophoridae 25

Epimetopidae 33

Georissidae 33

Hydrochidae 35

Spercheidae 36

Hydrophilidae 37

Sphaeritidae 76

Syntelidae 76

Histeridae 76

Hydraenidae 130

Ptiliidae 162

Agyrtidae 177

Leiodidae 180

Silphidae 291

Staphylinidae 304

### VOLUME 2

Staphylinidae 901

References 1135

Index to family-group names 1664

Index to genus-group names 1668

**Publication date**

Reichardt 1930c as cited in the first edition of this catalog should actually be cited as Reichardt 1929, and the dates of the many new taxa described in it changed to 1929. The relevant part of volume 30 (= 1929) of the journal *Ezhegodnik Zoologicheskogo Muzeya, Akademiya Nauk Soyuzo Sovetskikh Sotsialisticheskikh Respublik* in the Museum of Comparative Zoology at Harvard University bears a library stamp indicating that it was received on 4 September 1929.

**Leiodidae**

A.F. Newton

**New replacement names**

*Bathyscia jeannelides* Newton, **nom. nov.** for *Bathyscia jeanneli* Casale, Giachino & M. Etonti, 1990 [nec *Bathysciella jeanneli* (Abeille de Perrin, 1904)] [PHN].

*Agathidium (Agathidium) japonicides* Newton, **nom. nov.** for *Agathidium (Agathidium) japonicum* Portevin, 1927 [nec *Agathidium japonicum* (Portevin, 1908) (= *A. (Neoceble) dubium* Portevin, 1908)] [SHN in *Agathidium*].

**New status and synonymy**

*Choleva bicolor* Jeannel, 1923, **stat. nov.** as valid name = *Choleva nivalis* ab. *pozi* Roubal, 1916, **syn. nov.** (unavailable, infrasubspecific name) [Note: *C. pozi* was later considered a variety by Roubal (1931) and a valid species by Perreau (2000), but *C. bicolor* has priority (ICZN 1999, Art. 45.5.1)].

*Troglodromus bucheti caussicola* Laneyrie, 1967: 628, **stat. nov.** as valid name; = *Troglodromus bucheti* ab. *caussicola* Jeannel, 1947, **syn. nov.** (unavailable, infrasubspecific).

*Troglodromus bucheti infernalis* Laneyrie, 1967: 628, **stat. nov.** as valid name = *Troglodromus bucheti* ab. *infernalis* Jeannel, 1947, **syn. nov.** (unavailable, infrasubspecific) = *Troglodromus bucheti* ab. *orientalis* Jeannel, 1947, **syn. nov.** (unavailable, infrasubspecific).

*Troglodromus bucheti orientalis* Laneyrie, 1967: 628, **stat. nov.** as valid name = *Troglodromus bucheti* ab. *orientalis* Jeannel, 1947, **syn. nov.** (unavailable, infrasubspecific).

[Note: Laneyrie (1967) conferred availability on the above three unavailable Jeannel names by elevating them to subspecies rank and is the author of the names (ICZN 1999, Art. 45.5.1)].

**Unavailable names**

*Pholeuon angusticollis alunense*, *P. a. gujai*, and *P. a. longicorne* Racoviță, 2009 are unavailable because no name-bearing types or holotype depository are indicated (Art. 16.4).

*Pholeuon knirschi albacense*, *P. k. christiani*, and *P. k. vartopense* Racoviță, 2006 and *P. k. onaci* Racoviță, 2007 are unavailable because no name-bearing types or holotype depository are indicated (Art. 16.4).

*Pholeuon leptodirum jeanneli*, *P. l. problematicum*, *P. l. fagense*, *P. l. moldovani*, and *P. l. nlanum* Racoviță, 2010 are unavailable because no name-bearing types or holotype depository are indicated (Art. 16.4).

**Leiodidae**

M. Perreau

**Comments**

*Anthroherpon brckoensis* Giachino & Guéorguiev, 1993 was stated to come from Brčko, northern Bosnia. This is doubtful, because the locality is outside the known distributional range of the genus.

**Unavailable name**

The name *ferrugineum* Csiki, 1909 is currently listed in synonymy of *Agathidium nigrinum* Sturm, 1807. It was introduced as an aberration of *Agathidium rhinoceros* Sharp, 1866.

**Silphidae**

J. Růžička

**Unavailable name**

*Ptomascopus pseudoplagiatus* was described by Li (2009) in an unpublished Chinese master dissertation.

Later, Li et al. (2011) provided its English redescription, but clearly attributed this species to Li (2009). Ji (2012) treated it as a junior subjective synonym of *P. plagiatus* (Ménétriés, 1854), and stated that Li et al. (2011) made the name available. However, *Ptomascopus pseudoplagiatus* is an unavailable nomen nudum.

**Staphylinidae**

M. Schülke &amp; A.F. Newton

**Unavailable names**

*Gyrophaena cagatay* Sert, Turan, Fırat & Şabanoğlu, 2013: 2 [electronic publication, not meeting provisions of Article 8.5.3 ICZN: no registration in Zoobank, no statement of holotype deposition].

*Stenus alopex* Ryvkin, 2012: 26 [electronic publication, not meeting provisions of Article 8.5.3 ICZN: registration in Zoobank 2012-10-05 after publication 2012-05-24].

*Stenus canalis* Ryvkin, 2012: 30 [electronic publication, not meeting provisions of Article 8.5.3 ICZN: registration in Zoobank 2012-10-05 after publication 2012-05-24].

*Stenus canosus* Ryvkin, 2012: 28 [electronic publication, not meeting provisions of Article 8.5.3 ICZN: registration in Zoobank 2012-10-05 after publication 2012-05-24].

*Stenus delitor* Ryvkin, 2012: 32 [electronic publication, not meeting provisions of Article 8.5.3 ICZN: registration in Zoobank 2012-10-05 after publication 2012-05-24].

*Stenus yiae* Z.-Y. Zhao & H.-Z. Zhou, 2008: 89 [no holotype depository indicated following Article 16.4.2 ICZN].

*Stenus primivenatus* C.-Y. Zhao & H.-Z. Zhou, 2008: 88 [no holotype depository indicated following Article 16.4.2 ICZN].

*Domene barraganensis* Outerelo & Gamarra, 2012: 124 [electronic publication, not meeting provisions of Article 8.5.3 ICZN: missing name and address of permanent archive according to Article 8.5.3.1].

*Platydomene daibosatsuensis* Watanabe, 2009c: 245 [no holotype depository indicated following Article 16.4.2 ICZN].

*Platydomene flavipes* Watanabe, 2009c: 248 [no holotype depository indicated following Article 16.4.2 ICZN].

*Platydomene iidesana* Watanabe, 2009c: 251 [no holotype depository indicated following Article 16.4.2 ICZN].

**Staphylinidae**

M. Schülke

**New replacement names**

*Eleusis biswasianus* **nom. nov.** for *Eleusis sikkimensis* Biswas, 2003, a junior primary homonym of *Eleusis sikkimensis* Cameron, 1945 and *Eleusis sikkimensis* Scheerpeltz, 1965 (= *Eleusis teestaensis* Herman, 2001).

genus *Pseudotriarthron* Wollaston, 1857: 148 type species *Pseudotriarthron numidicum* Normand, 1938

subgenus *Deltocnemis* J. Sahlberg, 1886: 87 type species *Deltocnemis hamatus* J. Sahlberg, 1886

*hamatum* J. Sahlberg, 1886: 87 (*Deltocnemis*) A: ES FE KZ MG XIN

*punctipenne* Reitter, 1901d: 69 (*Triarthron*)

subgenus *Pseudotriarthron* Wollaston, 1857: 148 type species *Pseudotriarthron numidicum* Normand, 1938

*Stereus* Wollaston, 1857: 148 [HN] type species *Stereus cercyonides* Wollaston, 1857

*cercyonides* Wollaston, 1857: 149 (*Stereus*) N: MR

*hispanicum* Sáez Bolaño, Blanco Villero & Lencina, 2013: 8 E: SP (Murcia)

*numidicum* Normand, 1938b: 346 N: TU

*thurepalmi* Israelson, 1978: 183 (*Triarthron*) N: CI (La Palma, Tenerife)

genus *Sogda* Lopatin, 1961: 121 type species *Sogda pavlovskii* Lopatin, 1961

subgenus *Sogda* Lopatin, 1961: 121 type species *Sogda pavlovskii* Lopatin, 1961

*hadai* Hoshina, 2014b: 279 A: JA (Kyushu)

*pavlovskii* Lopatin, 1961: 123 A: TD TM

subgenus *Trichohydriobius* Vogt, 1961: 154 type species *Hydriobius perrisii* Fairmaire, 1855 (= *Anisotoma suturalis* Zetterstedt, 1828)

*ciliaris* Thomson, 1874: 545 (*Hydriobius*) E: DE FI LT NR NT SV A: KI MG

*hyperborea* A. Strand, 1943a: 74 (*Hydriobius*)

*mongolica* Hlisenkovský, 1967c: 255 (*Hydriobius*)

*hirta* Švec, 2010: 198 A: AE

*secunda* Guillebeau, 1897c: 224 (*Hydriobius*) E: FR IT NL A: AF MG TD UZ

*circumcincta* Reitter, 1913n: 652 (*Hydriobius*)

*flavipennis* Hlisenkovský, 1967c: 257 (*Hydriobius*)

*klapperichi* Hlisenkovský, 1964b: 9 (*Hydriobius*)

*parallela* Reitter, 1909a: 248 (*Hydriobius*)

*suturalis* Zetterstedt, 1828: 269 (*Anisotoma*) E: DE FI FR GB GE IT LT NL NR NT PL SV N: AG A: MG

*ciliata* Portevin, 1914b: 197 (*Hydriobius*)

*perrisii* Fairmaire, 1855d: lxxv (*Hydriobius*)

genus *Triarthron* Märkel, 1840: 141 type species *Triarthron maerkelii* W.L.E. Schmidt, 1840

*maerkelii* W.L.E. Schmidt, 1840: 141 E: AU CR CT CZ DE FI FR GB GE HU IT NL NR NT PL RO SK SV

SZ A: JA

*tredli* Obenberger, 1914: 103

#### subfamily Platypsyllinae Ritsema, 1869

genus *Leptinus* P.W.J. Müller, 1817: 266 type species *Leptinus testaceus* P.W.J. Müller, 1817

*caucasicus* Motschulsky, 1840a: 176 E: AB GG A: TR

*illyricus* Besuchet, 1980b: 136 E: AU SL SZ

*pyrenaicus* Besuchet, 1980b: 139 E: FR (Hautes-Pyrénées) SP (Cantabria)

*seriatus* Doderer, 1916: 347 E: IT SZ

*testaceus* P.W.J. Müller, 1817: 268 E: AU BE BH BY CR CZ DE FR GB GE GG HU IR IT NL NR PL RO SK SL SP SV

SZ TR UK YU A: IN TR

*vaulogeri* Jeannel, 1922e: 587 E: SP N: AG MO

genus *Platypsyllus* Ritsema, 1869: 23 type species *Platypsyllus castoris* Ritsema, 1869

*castoris* Ritsema, 1869: 23 E: BE BY CZ FR GE LA NL NR PL SK SV SZ NAR

*castorinus* Westwood, 1869: 119

genus *Silphopsyllus* Olsufiev, 1923: 84 type species *Silphopsyllus desmanae* Olsufiev, 1923

*desmanae* Olsufiev, 1923: 86 E: CT ST

#### family SILPHIDAE Latreille, 1806

##### subfamily Silphinae Latreille, 1806

genus *Ablattaria* Reitter, 1885a: 75 type species *Silpha laevigata* Fabricius, 1775

*arenaria* Kraatz, 1876a: 368 (*Phosphuga*) E: GR A: CY IN IQ IS JO LE SY TR

*alleoni* Portevin, 1926a: 24

*punctigera* Reitter, 1885a: 75

*cribrata* Ménériés, 1832: 168 (*Silpha*) E: AB AR GG ST A: IN TM

*cribrata* Faldermann, 1835a: 221 (*Silpha*) [HN]

*laevigata* Fabricius, 1775: 74 (*Silpha*) E: AL AR AU BE BH BU BY CR CZ EN FR GB GE GG GR HU IT LS LU MC

MD ME NL PL RO SB SK SL SP ST SZ TR UK A: TR

*costulata* Portevin, 1926a: 25

*distinguenda* Portevin, 1926a: 25

*gibba* Brullé, 1832: 162 (*Silpha*)

*meridionalis* Ganglbauer, 1899: 191

*punctata* Portevin, 1926a: 26

*polita* Sulzer, 1776: 28 (*Silpha*)

*subtriangula* Reitter, 1905a: 90 E: SP

genus *Aclypea* Reitter, 1885a: 81 type species *Peltis undata* O.F. Müller, 1776

*Blitophaga* Reitter, 1885a: 82 type species *Silpha opaca* Linnaeus, 1758

*altaica* Gebler, 1830: 94 (*Silpha*) A: ES MG WS

*capitata* Jakovlev, 1891: 124 (*Blitophaga*)

*jacutica* Ryabukhin, 1990: 140 (*Blitophaga*)

*bicarinata* Gebler, 1830: 95 (*Silpha*) E: ST A: KZ TM

*nuda* Motschulsky, 1845a: 52 (*Oiceoptoma*)

*calva* Reitter, 1890e: 357 (*Blitophaga*) A: KI KZ TD UZ XIN

*nitida* Portevin, 1943: 47 (*Blitophaga*)

*plana* A.P. Semenov, 1891: 298 (*Silpha*)

*semenowi* Jakovlev, 1891: 125

*cicatricose* Reitter, 1885a: 82 A: IN

- daurica* Gebler, 1832: 48 (*Silpha*) A: BEI ES FE GAN HEB HEI HUB NC NMO QIN SC SCH SHA SHX  
*bistigma* J. Frivaldszky, 1892: 122 (*Blitophaga*)  
*bituberosa* Fairmaire, 1888b: 114 (*Silpha*) [HN]  
*fairmairei* Portevin, 1905a: 50 (*Blitophaga*) [RN]  
*hexastigma* Solsky, 1876b: 274 (*Silpha*)  
*velutina* Portevin, 1943: 47 (*Blitophaga*)  
*kopetdaghica* Nikolaev, 2002: 87 A: KZ TM  
*opaca* Linnaeus, 1758: 361 (*Silpha*) E: AR AU BE BU BY CT CZ DE EN FI FR GB GE GG HU IR IT LA LS LT LU  
 MC MD NL NR NT PL RO SK SL SP ST SV SZ UK A: ES KI KZ MG TM UZ WS XIN NAR  
*binotata* Portevin, 1926a: 59 (*Blitophaga*)  
*hirta* Herbst, 1783: 34 (*Silpha*)  
*mandli* Portevin, 1932a: 59 (*Blitophaga*)  
*reitteri* Portevin, 1926a: 56 (*Blitophaga*) [RN]  
*samnitica* Fiori, 1899: 161 (*Blitophaga*)  
*tomentifera* Reitter, 1907d: 330 (*Blitophaga*)  
*tomentosa* Villers, 1789: 89 (*Silpha*)  
*turkestana* Hatch, 1928: 98 (*Silpha*) [RN]  
*vicina* Jakovlev, 1891: 125 (*Blitophaga*)  
*villosa* Naezén, 1792: 168 (*Silpha*)  
*villosa* Reitter, 1887d: 282 (*Blitophaga*) [HN]  
*pamirensis* Jakovlev, 1887a: 153 A: TD  
*sericea* Zubkov, 1833: 320 (*Silpha*) E: KZ ST A: KZ  
*souverbii* Fairmaire, 1848: 168 (*Silpha*) E: AU BH CZ FR GE RO SK SP A: ES KZ WS  
*alpicola* Küster, 1849a: no. 27 (*Silpha*)  
*turkestanica* Ballion, 1871: 329 (*Silpha*) A: AF IN KA KI KZ PA TD TM UZ XIN  
*biseriata* Reitter, 1893c: 221  
*christophi* Kraatz, 1876a: 372 (*Oiceoptoma*)  
*sculpturata* Grouvelle, 1903: 125  
*seriatorugosa* Reitter, 1897d: 211  
*transcaspica* A.P. Semenov, 1903: 15 (*Blitophaga*) [RN]  
*undata* O.F. Müller, 1776: 64 (*Peltis*) E: AB AL AR AU BE BH BU BY CR CT CZ DE EN FI FR GB GE GG GR HU  
 IT LA LT LU MC MD NL NT PL PT RO SK SL SP ST SV SZ UK YU A: ES IN KZ TM TR  
*anatolica* Kraatz, 1876a: 370 (*Xylodrepa*)  
*cancellata* Gmelin, 1790: 1622 (*Silpha*)  
*kindermanni* Faust, 1877: 28 (*Oiceoptoma*)  
*nitidior* Portevin, 1926a: 263 (*Blitophaga*)  
*quadricarinata* Portevin, 1926a: 62 (*Blitophaga*)  
*reticulata* Fabricius, 1787: 49 (*Silpha*) [HN]  
*verrucosa* Ménétrés, 1832: 168 (*Silpha*)  
*verrucosa* Faldermann, 1835a: 222 (*Silpha*) [HN]

- genus *Dendroxena* Motschulsky, 1858e: 125 type species *Silpha quadripunctata* Schreber, 1759 (= *Silpha quadrimaculata* Scopoli, 1771)  
*Xylodrepa* Thomson, 1859: 56 type species *Silpha quadripunctata* Schreber, 1759 (= *Silpha quadrimaculata* Scopoli, 1771)  
*quadrimaculata* Scopoli, 1771: 86 (*Silpha*) E: AB AR AU BE BU BY CR CT CZ DE EN FI FR GB GE GG GR HU IR  
 IT KZ LA LT LU MC MD NL NR NT PL RO SK SP ST SV SZ UK YU N: AG A: ES IN KZ TR NAR  
*flavicans* Goeze, 1777: 193 (*Silpha*)  
*hexapunctata* Gerhardt, 1897: 204 (*Silpha*)  
*maculata* Geoffroy, 1785: 31 (*Peltis*) [HN]  
*quadripunctata* Schreber, 1759: 8 [HN] (*Silpha*)  
*schreberi* Pope, 1964: 744 (*Silpha*) [RN]  
*sexcarinata* *sexcarinata* Motschulsky, 1861b: 40 A: FE HEB HEI JA JIL LIA NC SC SHX  
*sylvatica* Lewis, 1888a: 8 (*Silpha*)  
  
 genus *Diamesus* Hope, 1840: 149 type species *Necrodes osculans* Vigors, 1825  
*bimaculatus* Portevin, 1914a: 6 A: TAI  
*osculans* Vigors, 1825: 537 (*Necrodes*) A: ANH BT CHQ GUA HAI HUN YUN ZHE JA (Ishigaki-jima) NP SD UP  
 AUR ORR  
*reductus* Pic, 1917b: 2  
  
 genus *Heterotemma* Wollaston, 1864: 96 type species *Silpha figurata* Brullé, 1839  
*britoi* García & Pérez, 1996: 40 N: CI (La Palma)  
*figurata* Brullé, 1839: 59 (*Silpha*) N: CI (Tenerife)  
*costata* Brullé, 1836: pl. 2 (*Silpha*) [HN]  
*tenuicornis* Brullé, 1836: pl. 2 (*Silpha*) N: CI (Tenerife)  
*simplicicornis* Brullé, 1839: 59 (*Silpha*)  
  
 genus *Necrodes* Leach, 1815: 88 type species *Silpha littoralis* Linnaeus, 1758  
*Asbolus* Bergroth, 1884: 229 type species *Silpha littoralis* Linnaeus, 1758  
*Protonecrodes* Portevin, 1922b: 508 type species *Silpha surinamensis* Fabricius, 1775  
*littoralis* Linnaeus, 1758: 360 (*Silpha*) E: AB AL AR AU BE BH BU BY CR CT CZ DE EN FI FR GB GE GG GR HU  
 IR IT LA LS LT LU MD NL NR NT PL PT RO SK SL SP ST SV SZ UK YU A: AF ANH BEI CHQ ES FE FUJ GAN  
 GUA GUX HEB HEI HP HUB HUN IN JA JIL JIX KI KZ LIA MG NC PA QIN SC SCH SHA TD TM TR UP UZ  
 XIN XIZ YUN  
*asiaticus* Portevin, 1922b: 507  
*clavipes* Sulzer, 1776: 28 (*Silpha*) [HN]  
*contusus* Bergsträsser, 1778: 66 (*Peltis*)  
*curtisi* Leach, 1815: 89  
*femoratus* O.F. Müller, 1776: 64 (*Peltis*)  
*gibbosus* Geoffroy, 1785: 30 (*Peltis*)

*lividus* Herbst, 1783: 34 (*Silpha*)

*rufoclavatus* De Geer, 1774: 176 (*Silpha*)

*nigricornis* Harold, 1875: 286 A: JA GUA HEI HUB NC SC SCH SHG TAI UP ORR

*brevicollis* Arrow, 1909: 190

**genus *Necrophila*** *Necrophila* Kirby & Spence, 1828: 509 type species *Silpha americana* Linnaeus, 1758

**subgenus *Calosilpha*** Portevin, 1920b: 397 type species *Silpha ioptera* Kollar & L. Redtenbacher, 1844

*brunnicollis* Kraatz, 1877: 106 (*Silpha*) A: ANH BEI BT CHQ FE FUJ GAN GUA GUI GUX HEI HKG HUB HUN JA JIL JIX NC QIN SC SD SCH SHA SHX TAI YUN ZHE

*bicolour* Fairmaire, 1900: 616 (*Silpha*)

*imasakai* Nishikawa, 1986b: 154 (*Eusilpha*)

*kurosawai* Nishikawa, 1986b: 156 (*Eusilpha*)

*cyaneocephala* Portevin, 1914a: 6 (*Eusilpha*) A: TAI

*cyaniventris* Motschulsky, 1870a: 348 (*Oiceoptoma*) A: AP HAI HP NP SD UP YUN ORR

*ioptera* Kollar & L. Redtenbacher, 1844: 512 (*Silpha*) A: HP NP PA SD UP ORR

*gilleti* Portevin, 1920b: 397 (*Eusilpha*)

*obscuriventris* Motschulsky, 1870a: 349 (*Oiceoptoma*)

**subgenus *Deutosilpha*** Portevin, 1920b: 396 type species *Silpha rufithorax* Wiedemann, 1823

*luciae* Růžička & Schneider, 2011: 10 A: YUN ORR

*rufithorax* Wiedemann, 1823: 71 (*Silpha*) A: NP UP ORR

*tetraspilatum* Hope, 1833: 61 (*Oiceoptoma*)

**subgenus *Eusilpha*** A.P. Semenov, 1890: 299 type species *Silpha japonica* Motschulsky, 1862

*andrewesi* Portevin, 1923b: 81 A: "Chine"

*cyaneocincta* Fairmaire, 1878a: 92 (*Silpha*) A: SCH

*jakowlewi jakowlewi* A.P. Semenov, 1891: 299 (*Silpha*) A: GAN JA (Tsushima) NC SC ZHE

*jakowlewi simulator* Shibata, 1969: 51 (*Eusilpha*) A: JA (Honshu)

*japonica* Motschulsky, 1861a: 12 (*Silpha*) A: JA NC SC TAI

*subcaudata* Fairmaire, 1888a: 14 (*Silpha*) A: SCH YUN

*thibetana* Fairmaire, 1894: 218 (*Silpha*) A: SCH

**genus *Oiceoptoma*** Leach, 1815: 89 type species *Silpha thoracica* Linnaeus, 1758

*Isosilpha* Portevin, 1920b: 398 type species *Eusilpha hypocrita* Portevin, 1903

*hypocrita* Portevin, 1903b: 332 (*Eusilpha*) A: BT HP NP SCH SD SHA UP XIZ YUN ORR

*nakabayashii* Miwa, 1937: 244 (*Silpha*) A: TAI

*nigropunctatum* Lewis, 1888a: 9 (*Silpha*) A: JA

*picescens* Fairmaire, 1894: 217 (*Silpha*) A: SCH YUN

*subrufum* Lewis, 1888a: 9 (*Silpha*) A: BEI FE GAN HEB HEN JA LIA NC NMO SC SHA

*dauidi* Portevin, 1903b: 331 (*Thanatophilus*)

*thoracicum* Linnaeus, 1758: 360 (*Silpha*) E: AB AR AU BE BH BU BY CR CT CZ DE EN FI FR GB GE GG GR HU IT LA LS LT LU MC MD NL NR NT PL RO SK SL SP ST SV SZ UK YU A: ES FE HEB HEI JA JIL KZ LIA MG NC SC SHX TR WS

*golowatschowii* Lindemann, 1865: 148

**genus *Phosphuga*** Leach, 1817: 75 type species *Silpha atrata* Linnaeus, 1758

*atrata atrata* Linnaeus, 1758: 360 (*Silpha*) E: AB AL AR AU BE BH BU BY CR CT CZ DE EN FI FR GB GE GG GR HU IT LA LS LT LU MC MD NL NR NT PL PT RO SK SL SP ST SV SZ UK YU A: AF BEI ES FE GAN HEB HEI IN JA JIL KA KI KZ LIA MG NC NMO QIN SCH SHA SHX TD TM TR UZ XIN ORR

*borsodensis* Depoli, 1931: 17

*brunnea* Herbst, 1793: 202 (*Silpha*)

*cassidea* Kraatz, 1876a: 362

*fusca* Herbst, 1793: 200 (*Silpha*) [HN]

*lombarda* Depoli, 1931: 17

*nitida* Faldermann, 1835a: 220 (*Silpha*)

*paedemontana* Fabricius, 1775: 75 (*Silpha*)

*punctata* De Geer, 1774: 177 (*Silpha*)

*punctata* Herbst, 1786: 159 (*Silpha*) [HN]

*rostrata* Reitter, 1888b: 153 (*Peltis*)

*shakotana* Kôno, 1929: 160 (*Silpha*)

*subparallela* Reitter, 1885a: 76 (*Peltis*)

*atrata subrotundata* Leach, 1817: 75 E: GB (Isle of Man, Scotland) IR

*ruzickai* Khachikov, 2011: 39 E: GG (Abkhaziya) ST (Karachayevo-Cherkesskaya Respublika)

**genus *Silpha*** Linnaeus, 1758: 359 type species *Silpha obscura* Linnaeus, 1758

*Carpatosilpha* Smetana, 1952a: 65 type species *Silpha tatrica* Smetana, 1952

*Parasilpha* Reitter, 1885a: 76 type species *Silpha carinata* Herbst, 1783

*alpestris* Kraatz, 1876a: 368 E: HU IT RO SK

*oblonga* Küster, 1851a: no. 22 [HN]

*businskyorum* Háva, Schneider & Růžička, 1999: 78 A: HEN SHA

*carinata* Herbst, 1783: 34 E: AB AL AR AU BE BH BU BY CR CT CZ DE EN FI FR GB GE GG HU IT LA LT LU MD NL NR NT PL RO SK SL ST SV SZ UK YU A: ES KA KI KZ MG TD TM UZ XIN

*armeniaca* Kolenati, 1846b: 50

*atropurpurea* Küster, 1851a: no. 14

*austriaca* Otto, 1891: 59

*bilineata* Reitter, 1901f: 122

*blattiformis* Reitter, 1901f: 121

*carpathica* Reitter, 1901f: 122

*croatica* Obenberger, 1917a: 11

*griesbachiana* Stephens, 1830: 26

- italic* Küster, 1851a: no. 15  
*jeanneli* Portevin, 1926a: 67  
*recta* Marsham, 1802: 117  
*rufocincta* Reitter, 1901f: 121  
*tatrica* Smetana, 1952a: 66  
*trilineata* Gmelin, 1790: 1627  
*koreana* Cho & Kwon, 1999: 221 A: SC  
*khumbuensis* Schawaller, 1982: 245 A: NP  
*longicornis* Portevin, 1926a: 69 [RN] A: JA (Honshu, Sadogashima)  
*imitator* Shibata, 1969: 49  
*japonica* Portevin, 1920a: 309 (*Phosphuga*) [HN]  
*yamatona* Kôno, 1929: 158  
*martensi* Emetz & Schawaller, 1975: 223 A: NP  
*melanura* Hope, 1831: 21 A: NP  
*nakanei* Emetz & Schawaller, 1975: 227  
*nepalica* Emetz & Schawaller, 1975: 225 A: NP  
*obscura obscura* Linnaeus, 1758: 361 E: AB AL AR AU BE BH BU BY CR CT CZ DE EN FI FR GB GE GG GR HU  
 IT LA LT LU MC MD NL NR NT PL RO SK SL SP ST SV SZ UK YU A: AF ES HP IN KA KI KZ MG PA TD TR  
 UZ XIN ORR  
*ablattarioides* Portevin, 1943: 48  
*carniolica* Küster, 1851a: no. 19  
*corax* Reitter, 1889d: 255 (*Parasilpha*)  
*costata* Ménétrés, 1832: 167  
*distinct* Portevin, 1906: 386  
*godarti* Reiche, 1862: 369  
*koenigiana* Zaitzev, 1914: 160  
*latialis* Depoli, 1931: 14  
*mongolica* Schawaller, 1980: 9 [HN]  
*montenegrina* Obenberger, 1917a: 12  
*nitida* Portevin, 1907b: 252 [HN]  
*podolica* Portevin, 1926a: 75  
*scheibei* Portevin, 1937: 179  
*similis* Portevin, 1926a: 76  
*simplex* A.P. Semenov, 1891: 297  
*striola* Ménétrés, 1832: 168  
*obscura orientalis* Brullé, 1832: 161 E: BU GR MC RO A: TR  
*lugens* Küster, 1851a: no. 18  
*multipunctata* Frivaldszky von Frivald, 1845: 182  
*turcica* Küster, 1851b: no. 16  
*obscura validior* A.P. Semenov, 1891: 297 A: KI TD TM UZ  
*chamaulti* Portevin, 1926a: 73

- olivieri* Bedel, 1887: 196 E: AL BU CR FR GR IT MA MC PT SP N: AG MO TU  
*aquilana* Depoli, 1931: 16  
*sardoa* Depoli, 1931: 16  
*unicostata* Reitter, 1885a: 58 [HN]  
*perforate* Gebler, 1832: 49 A: BEI ES FE HEB HEI JA JIL JIX LIA MG NC NMO SC SHA SHX  
*elongate* Portevin, 1943: 48  
*lateralis* Portevin, 1926a: 70  
*mandli* Portevin, 1932a: 59  
*mongolica* Faldermann, 1835b: 365  
*porosa* Kraatz, 1876a: 373  
*sculptipennis* Faldermann, 1835b: 366  
*venatoria* Harold, 1877: 346  
*puncticolis* Lucas, 1846: 213 E: FR IT PT SP N: AG CI (Tenerife) MO TU  
*cristata* Reiche, 1862: 370  
*hispanica* Küster, 1849a: no. 26  
*lucasi* Portevin, 1926a: 77  
*quinlinga* Schawaller, 1996: 140 A: HUB SCH SHA  
*schawalleri* Háva, Schneider & Růžička, 1999: 80 A: SCH  
*tristis* Illiger, 1798: 366 E: AB AR AU BE BH BU BY CR CT CZ DE EN FI FR GB GE GG GR HU IR IT LA LS LT LU  
 MD NL NR NT PL PT RO SK SL SP ST SV SZ UK N: MO A: IN TR NAR  
*dalmatina* Küster, 1851a: no. 17  
*franzi* Schweiger, 1967: 548  
*granulata* Thunberg, 1794a: 72 [HN]  
*tyrolensis* Laicharting, 1781: 98 E: AN AU CZ FR GB GE IR IT LS PT RO SK SP SZ  
*alpine* Germar, 1824: 82  
*ambigua* Graëlls, 1858: 57  
*cottia* Depoli, 1931: 15  
*externa* Portevin, 1926a: 78  
*fluctuosa* L.W. Schaufuss, 1871: 204  
*nigrita* Creutzer, 1799: 116  
*pennina* Depoli, 1931: 16  
*pyrenaica* Portevin, 1943: 48  
**genus *Thanatophilus* Leach, 1815: 89** type species *Silpha sinuata* Fabricius, 1775  
*Chalcosilpha* Portevin, 1926a: 31 type species *Silpha micans* Fabricius, 1794  
*Philas* Portevin, 1903b: 331 [HN] type species *Silpha truncata* Say, 1823  
*Pseudopelta* Bergroth, 1884: 229 type species *Silpha sinuata* Fabricius, 1775  
*Silphosoma* Portevin, 1903b: 333 type species *Silpha metallescens* Faimaire, 1887  
*dentiger* A.P. Semenov, 1890: 303 (*Silpha*) A: GAN HP KA NP PA QIN SCH TD UP XIZ YUN  
*elongates* Portevin, 1926a: 45  
*intermedius* Portevin, 1926a: 46



- dispar* Herbst, 1793: 204 (*Silpha*) E: AU BE BU BY CT CZ DE EN FI FR GB GE IR IT LA LT MD NL NR NT PL SK SL ST SV SZ UK A: ES FE KI KZ MG QIN UZ WS XIN  
*abscissus* Laicharting, 1781: 91 (*Silpha*)  
*frigidus* J. Sahlberg, 1889: 21  
*ferrugatus* Solsky, 1874: 215 (*Silpha*) E: ST A: AF IN KI KZ TD TM UZ  
*grilati* Bedel, 1891b: xxxvii (*Silpha*) N: AG TU  
*lapponicus* Herbst, 1793: 209 (*Silpha*) E: FI IC NR NT SV A: ES FE JA KZ MG WS NAR  
*californicus* Mannerheim, 1843b: 253 (*Silpha*)  
*caudatus* Say, 1823: 192 (*Silpha*)  
*irregularis* Portevin, 1919: 221  
*lapponicus* Thunberg, 1794a: 72 (*Silpha*) [HN]  
*muelleri* Portevin, 1932a: 58  
*sachalinicus* Kieseritzky, 1909: 126  
*tuberculatus* Germar, 1824: 81 (*Silpha*)  
*latericarinatus* Motschulsky, 1860b: 124 (*Oiceoptoma*) A: ES FE GAN GUX HEI MG QIN WS  
*micans* Fabricius, 1794: 445 (*Silpha*) A: YE AFR  
*coeruleoviridans* Dohrn, 1885: 138 (*Silpha*)  
*minutes* Kraatz, 1876a: 374 A: AF HP NP SD UP XIZ ORR  
*pilosus* Jakovlev, 1889: 258 (*Pseudopelta*) A: QIN SCH XIZ  
*porrectus* A.P. Semenov, 1890: 301 (*Silpha*) E: AR A: AF FE KA KI PA QIN TD UZ XIN  
*armeniacus* Reitter, 1912a: 104  
*sillemi* Portevin, 1935: 281  
*roborowskyi* Jakovlev, 1887b: 316 (*Pseudopelta*) A: GAN QIN SCH SD XIZ YUN  
*dubius* Zhang, 1996: 115  
*ruficornis* Küster, 1851a: no. 11 (*Oiceoptoma*) E: IT (Sardegna, Sicilia) PT SP N: AG MO TU  
*tuberculatus* Lucas, 1846: 214 (*Silpha*) [HN]  
*rugosus* Linnaeus, 1758: 361 (*Silpha*) E: AB AL AR AU BE BH BU BY CR CT CZ DE EN FI FR GB GE GG GR HU IR IT LA LT LU MC MD NL NR NT PL PT RO SK SL SP ST SV SZ UK YU A: AF BEI ES FE GAN HEI IN IS JA KI KZ LIA MG NC QIN SC SCH SHA TD TM TR UZ XIN XIZ YUN  
*complicatus* Geoffroy, 1785: 30 (*Peltis*)  
*distinctus* Portevin, 1926a: 37  
*grossulus* Bergsträsser, 1778: 57 (*Silpha*)  
*intricatus* Ménériés, 1832: 169 (*Silpha*)  
*parimaribous* Herbst, 1793: 205 (*Silpha*)  
*rubripes* Portevin, 1943: 47  
*scaber* Scopoli, 1763: 21 (*Silpha*)  
*subrugosus* Portevin, 1919: 221  
*tuberculosis* Depoli, 1931: 13  
*vestitus* Küster, 1851a: no. 12 (*Oiceoptoma*)

- sinuatus* Fabricius, 1775: 75 (*Silpha*) E: AB AL AR AU BE BH BU BY CR CT CZ DE EN FI FR GB GE GG GR HU IT LA LS LT LU MD NL NR NT PL PT RO SK SL SP ST SV SZ UK YU N: AG MO TU A: AF BEI CY ES FE HEI HUB IN JA JIL KI KZ LIA MG NC NMO SC SCH SHA SHX TAI TD TM TR UZ XIN YUN  
*appendiculatus* Fuessli, 1775: 6 (*Silpha*)  
*auripilosus* Portevin, 1905b: 421  
*cyanescens* Portevin, 1943: 47  
*cypriatus* Portevin, 1943: 47  
*erythrurus* A.P. Semenov, 1891: 306 (*Silpha*) [HN]  
*obscurior* Portevin, 1926a: 40  
*pellaeocephalus* Bergsträsser, 1778: 56 (*Silpha*)  
*scutellatus* Portevin, 1926a: 40  
*unicostatus* Laporte, 1832: 400 (*Silpha*)  
*terminatus* Hummel, 1825: 59 (*Silpha*) E: AB AR GG MD RO ST UK A: ES IN KI KZ TD TM TR UZ WS XIN  
*levallanti* Mulsant & Godart, 1855: 270 (*Silpha*)  
*sibiricus* Gebler, 1830: 96 (*Silpha*)  
*trituberculatus* Kirby, 1837: 101 (*Oiceoptoma*) E: FI NT A: ES FE MG WS NAR  
*baicalicus* Motschulsky, 1860b: 125 (*Oiceoptoma*)  
*uralensis* Kozminykh, 1994: 162 E: CT  
genus *Thanatophilus*, **nomen dubium**  
*bipunctata* Fabricius, 1787: 45 (*Ips*) E: "Europa australiore" [transferred to *Silpha* by De Villers, 1789; probably a "clavicorn"]

subfamily **Nicrophorinae** Kirby, 1837

- genus *Eonecrophorus* Kurosawa, 1985: 45 type species *Eonecrophorus tenuicornis* Kurosawa, 1985  
*tenuicornis* Kurosawa, 1985: 47 A: NP

- genus *Nicrophorus* Fabricius, 1775: 71 type species *Silpha vespillo* Linnaeus, 1758  
*Acanthopsilus* Portevin, 1919: 223 type species *Nicrophorus concolor* Kraatz, 1877  
*Cyrtoscelis* Hope, 1840: 149 type species *Silpha vespillo* Linnaeus, 1758  
*Euneocrophorus* A.P. Semenov, 1933: 152 type species *Nicrophorus americanus* Olivier, 1790  
*Necroborus* Weigel, 1806: 90 type species *Silpha germanica* Linnaeus, 1758  
*Necrocleptes* A.P. Semenov, 1933: 153 type species *Silpha humator* Gleditsch, 1767  
*Necrocharis* Portevin, 1923a: 68 type species *Silpha carolina* Linnaeus, 1771  
*Nicrophorindus* A.P. Semenov, 1933: 153 type species *Nicrophorus validus* Portevin, 1920  
*Nicrophoricus* A.P. Semenov, 1933: 152 type species *Nicrophorus lunatus* Fischer von Waldheim, 1842  
*Nicropter* A.P. Semenov, 1933: 154 type species *Nicrophorus investigator* Zetterstedt, 1824  
*Neonicrophorus* Hatch, 1946: 99 type species *Silpha germanica* Linnaeus, 1758  
*Nesonecrophorus* A.P. Semenov, 1933: 153 type species *Nicrophorus podagricus* Portevin, 1920  
*Nesonecrophorus* A.P. Semenov, 1933: 154 type species *Nicrophorus distinctus* Grouvelle, 1885  
*Stictonecrophorus* A.P. Semenov, 1933: 154 type species *Nicrophorus pustulatus* Herschel, 1807

- subgenus** *Necroxenus* A.P. Semenov, 1926: 46 type species *Necrophorus przewalskii* A.P. Semenov, 1894  
*przewalskii* A.P. Semenov, 1894: 528 A: GAN QIN SCH  
*smefarka* Háva, Schneider & Růžička, 1999: 74 A: HUB SCH SHA
- subgenus** *Nicrophorus* Fabricius, 1775: 71 type species *Silpha vespillo* Linnaeus, 1758  
*antennatus* Reitter, 1885a: 88 (*Silpha*) E: AB AR AU BU BY CT CZ GG HU IT MD PL RO SK ST UK YU A: AF HEI  
 IN IS JO KA KI KZ SY TD TM TR UZ WS XIN  
*centralis* Portevin, 1914b: 196
- argutor* Jakovlev, 1891: 127 A: BEI ES GAN KZ MG NMO QIN XIZ  
*pseudobrutor* Reitter, 1895c: 327  
*tibetanus* Hlisenkovský, 1964o: 241
- basalis* Faldermann, 1835b: 364 A: BEI FE HEI JIA MG NC NMO SC  
*concolor* Kraatz, 1877: 100 A: ANH BEI BT FE FUJ GAN GUA GUI GUX HEI HP HUB HUN JA JIL JIX LIA NP NC  
 NMO SC SCH SHA TAI TIA XIZ YUN ZHE ORR  
*rotundicollis* Portevin, 1923a: 227
- dauricus* Motschulsky, 1860b: 125 A: BEI ES FE GAN HEI JIL MG NC NMO QIN SC SCH WS  
*orientalis* Motschulsky, 1860b: 126
- encaustus* Fairmaire, 1896: 82 A: HP KA NP UP
- germanicus* Linnaeus, 1758: 359 (*Silpha*) E: AR AU BE BU BY CR CT CZ DE FR GB GE GG HU IT LA LU MD NL  
 PL RO SK ST SV SZ UK YU A: IN KZ SY TM TR  
*apicalis* Kraatz, 1880: 117  
*armeniacus* Portevin, 1922a: 54  
*bimaculatus* Haworth, 1807: 82  
*bipunctatus* Kraatz, 1880: 117  
*cadaverinus* Gistel, 1857a: 565 [HN]  
*fascifer* Reitter, 1885a: 86 (*Silpha*)  
*frontalis* Fischer von Waldheim, 1844: 138  
*grandior* Angell, 1912: 307  
*listerianus* Geoffroy, 1785: 17 (*Dermestes*)  
*ornatus* Hlisenkovský, 1964g: 131  
*proserpinae* Gistel, 1857a: 571  
*ruthenus* Motschulsky, 1859b: 304  
*speciosus* Schulze, 1775: 95 (*Silpha*)
- humator* Gleditsch, 1767: 224 (*Silpha*) E: AB AR AU BE BH BU BY CR CT CZ DE EN FI FR GB GE GG GR HU IR  
 IT LA LS LT LU MD NL NR PL PT RO SK SL SP ST SV SZ UK YU N: AG MO A: AF ES IN IS KI KZ SY TD TM  
 TR UZ WS XIN  
*atricornis* Meier, 1899: 98  
*maculosus* Meier, 1899: 99  
*nigerrimus* Kraatz, 1884: 230  
*sulcatus* Fischer von Waldheim, 1844: 140

- interruptus* Stephens, 1830: 18 E: AB AR AU BE BH BU BY CR CT CZ DE EN FR GB GE GG GR HU IT LA LT LU  
 MC MD NL NR PL PT RO SK SL SP ST SV SZ UK YU N: AG MO A: ES IN KI KZ TR XIN  
*algericus* Pasquet, 1916: 154  
*basalis* Gistel, 1848: 190 [HN]  
*brunnipes* Gradl, 1882: 331  
*centrimaculatus* Reitter, 1895b: 200  
*corsicus* Laporte, 1832: 399  
*fossor* Erichson, 1837: 224  
*funereus* Gené, 1839: 58  
*gallicus* Jacquelin du Val, 1860: 139  
*infusaticornis* Portevin, 1924: 289  
*laportei* Meier, 1900: 219  
*nigricans* Pasquet, 1916: 153  
*pasqueti* Pic, 1917a: 21  
*suturalis* Motschulsky, 1860b: 126  
*trimaculatus* Gradl, 1882: 331  
*trinotatus* Reitter, 1911b: 106  
*vodozi* Meier, 1900: 218
- investigator* Zetterstedt, 1824: 151 E: AB AR AU BE BEI BH BU BY CR CT CZ DE EN FI FR GB GE GG HU IR IT  
 LA LIA LS LT LU MD NL NR NT PL RO SK SP ST SV SZ UK YU A: AF ES FE GAN HEB HEI IN JA KA KI KZ  
 MG NC PA SC SCH SHA SHN SHX TD TM TR UZ WS XIN NAR  
*aleuticus* Gistel, 1848: 190  
*baeckmanni* Kieseritzky, 1930: 64  
*confessor* LeConte, 1854: 20  
*funerator* Fauvel, 1890b: 348  
*funeror* Reitter, 1885a: 87 (*Silpha*)  
*grahami* Swan & Papp, 1972: 357  
*infodiens* Mannerheim, 1853: 170  
*insularis* Lafer, 1989: 339 [HN]  
*intermedius* Reitter, 1895c: 327  
*labiatus* Motschulsky, 1860b: 126  
*latifasciatus* Lewis, 1887b: 340  
*maritimus* Guérin-Méneville, 1834: pl. 17 [fig. 8]  
*maritimus* Mannerheim, 1843b: 251 [HN]  
*melsheimeri* Kirby, 1837: 97  
*microcephalus* Thomson, 1862: 9  
*particeps* Fischer von Waldheim, 1844: 139  
*pollinator* Mannerheim, 1853: 169  
*praedator* Reitter, 1887b: 217 (*Silpha*)  
*ruspator* Erichson, 1837: 225

- sibiricus* Motschulsky, 1860b: 126  
*submaculatus* Reitter, 1895c: 326  
*variolosus* Portevin, 1924: 149  
*japonicus* Harold, 1877: 345 A: BEI ES FE FUJ GUX HEB HEI HUB HUN JA JIA JIL LIA MG NC SC SHG SHN TAI TIA  
*lunatus* Fischer von Waldheim, 1842: 9 A: KI KZ UZ XIN  
*stenophthalmus* Jakovlev, 1887a: 154 (*Silpha*)  
*maculifrons* Kraatz, 1877: 101 A: BEI ES FE FUJ GAN GUX HEB HEI JA JIA NC NMO SC SHA SHG SHX  
*katafutonis* Kôno, 1929: 161  
*maculiceps* Jakovlev, 1887a: 154 (*Silpha*)  
*parvulus* Hlisnikovský, 1964o: 243  
*melissae* Sikes & Madge, 2006: 344 A: AP BT NP  
*mongolicus* Shchegoleva-Barovskaya, 1933a: 189 A: ES KZ MG TD  
*montivagus* Lewis, 1887b: 340 A: JA  
*mixtus* Hlisnikovský, 1964o: 242  
*morio* Gebler, 1817: 319 E: CT ST A: AF ES GAN HEB IN KI KZ MG NMO QIN TM UZ WS XIN  
*funebri* Jakovlev, 1891: 127  
*rugulipennis* Jakovlev, 1891: 126  
*nepalensis* Hope, 1831: 21 A: AP ANH BT CHQ FUJ GAN GUA GUI GUX HAI HEB HEN HP HUB HUN JA (Ryukyus) JIA JIX KA NMO NP PA QIN SCH SD SHA TAI UP XIZ YUN ZHE ORR  
*benguetensis* Arnett, 1946: 207  
*ocellatus* Deyrolle & Fairmaire, 1878: 90  
*nigricornis* Faldermann, 1835a: 217 E: AB AR GG ST A: IN KZ TR  
*oberthuri* Portevin, 1924: 187 A: GAN QIN SCH SHA YUN ORR  
*burmanicus* Hlisnikovský, 1964m: 223  
*unifasciatus* Hlisnikovský, 1964m: 224  
*quadraticollis* Portevin, 1903b: 330 A: ES FE HEI SC SCH XIZ  
*inclusus* Reitter, 1913n: 651  
*quadricollis* Hatch, 1928: 146 [HN] [RN]  
*quadripunctatus* Kraatz, 1877: 101 A: FE HEI HUB JA JIA JIX NC SC TAI  
*immaculatus* Portevin, 1923a: 307  
*reichardti* Kieseritzky, 1930: 60 A: KI KZ XIN  
*satanas* Reitter, 1893a: 147 E: KZ ST A: AF IN KI KZ PA TM UZ XIN  
*schawalleri* Sikes & Madge, 2006: 355 A: GAN QIN SCH SHA  
*semenowi* Reitter, 1887b: 216 (*Silpha*) A: GAN QIN SCH XIZ  
*temporalis* Shchegoleva-Barovskaya, 1933b: 251  
*sepulchralis* Heer, 1841: 388 E: AL AU BH BU CR FR GR IT MC SL SZ YU  
*sepultor* Charpentier, 1825: 200 E: AB AR AU BY CR CT CZ DE EN FR GE GG HU IT KZ LA LT MD NL PL SK SP ST SV SZ UK A: ES IN KI KZ MG TR UZ WS XIN XIZ  
*confuses* Portevin, 1924: 147  
*obrutor* Erichson, 1837: 225

- sinensis* Ji, 2012: 226A: BEI GAN HEB NIN  
*tenuipes* Lewis, 1887b: 341 A: FE HEI JA NC NMO SC SHX  
*fasciatus* Hlisnikovský, 1932: 22  
*vicinus* Shchegoleva-Barovskaya, 1933a: 172  
*trumboi* Sikes & Madge, 2006: 358 A: BT NP SD  
*ussuriensis* Portevin, 1923a: 233 A: FE HEI SC  
*validus* Portevin, 1920b: 401 A: NP SD XIZ  
*vespillo* Linnaeus, 1758: 359 (*Silpha*) E: AB AR AU BE BH BU BY CR CT CZ DE EN FI FR GB GE GG HU IR IT LA LS LT LU MD NL NR NT PL PT RO SK SP ST SV SZ UK YU A: ES IN KA KI KZ MG TD TM TR UZ WS XIN  
*bifasciatus* Hausmann, 1799: 33  
*bohemicus* Roubal, 1939b: 85  
*bolsmanni* Westhoff, 1881: 108  
*cadaverinus* Gravenhorst, 1807: 118  
*curvipes* Duftschmid, 1825: 112  
*fauveli* Fauconnet, 1893: 255  
*hadenius* Gistel, 1857a: 575  
*hauseri* Hlisnikovský, 1932: 23  
*minor* Westhoff, 1881: 108  
*spinipes* Leach, 1815: 88 (*Necrophagus*)  
*varendorffi* Westhoff, 1881: 108  
*vulgaris* Fabricius, 1775: 72  
*vespilloides* Herbst, 1783: 32 E: AB AL AR AU BE BH BU BY CR CT CZ DE EN FI FR GB GE GG GR HU IR IT LA LS LT LU MC MD NL NR NT PL RO SK SL SP ST SV SZ UK YU A: ES FE HEB HEI IN IS JA KZ MG NC NMO SC SCH SHX TR WS NAR  
*altumi* Westhoff, 1881: 108  
*aurora* Motschulsky, 1860b: 126  
*borealis* Portevin, 1914b: 195  
*borealis* Portevin, 1924: 375 [HN]  
*fractus* Portevin, 1914b: 195  
*hebes* Kirby, 1837: 96  
*mortuorum* Fabricius, 1792a: 248  
*oregonensis* Swan & Papp, 1972: 357  
*pygmaeus* Kirby, 1837: 98  
*subfasciatus* Portevin, 1914b: 195  
*subinterruptus* Pic, 1917a: 21  
*sylvaticus* Reitter, 1895c: 328  
*sylvivagus* Reitter, 1897b: 48  
*vestigator* Herschel, 1807: 274 E: AB AR AU BE BH BU BY CR CT CZ DE EN FR GB GE GG GR HU IT LT LU MC MD NL PL PT RO SK SP ST SV SZ UK YU A: ES IS KA PA TR WS  
*anglicus* Stephens, 1830: 17

*bipunctatus* Portevin, 1914b: 195 [HN]  
*brullei* Jakobson, 1910: 612 [RN]  
*cadaverinus* Mareuse, 1840: 40 [HN]  
*carreti* Pic, 1933: 5  
*degener* Carret, 1901: 330  
*interruptiolus* E. Strand, 1917: 83 [RN]  
*interruptus* Brullé, 1832: 160 [HN]  
*interruptus* Gistel, 1857a: 565 [HN]  
*obscuripennis* Portevin, 1914b: 195  
*olfactor* Gistel, 1848: 190  
*rautenbergi* Reitter, 1900b: 82  
*sepultor* Gyllenhal, 1827: 308 [HN]  
*viturati* Pic, 1917a: 21

genus *Nicrophorus*, **nomen dubium**

*chryseus* Mazokhin-Porshnyakov, 1953: 236 A: HEI (Gaolingzi)

genus *Ptomascopus* Kraatz, 1876b: 396 type species *Ptomascopus morio* Kraatz, 1877

*morio* Kraatz, 1877: 104 A: BEI FE GAN HEB HEI JA LIA NC SC SHA TAI

*carbunculus* Lewis, 1879b: 460

*lewisi* Portevin, 1919: 223

*villosus* Portevin, 1923a: 70

*plagiatus* Ménétré, 1854: 27 (*Necrophorus*) A: BEI FE FUJ GAN GUX HEB HEI HUB JIA LIA NC NMO QIN SC  
 SHA SHG TIA

*dauidis* Deyrolle & Fairmaire, 1878: 91

*plagiaticornis* Lewis, 1879b: 460

*quadrifasciatus* Kraatz, 1877: 104

*weberi* E. Bodemeyer, 1916: 112

*zhangla* Háva, Schneider & Růžička, 1999: 70 A: GAN SCH SHA YUN

family STAPHYLINIDAE Latreille, 1802

subfamily Omaliinae Macleay, 1825

tribe Anthophagini Thomson, 1859

genus *Acidota* Stephens, 1829a: 25 type species *Staphylinus crenatus* Fabricius, 1792

*Helobium* Gistel, 1834a: 9 type species *Staphylinus crenatus* Fabricius, 1792

*brevis* Assing, 2004n: 672 A: TR

*crenata crenata* Fabricius, 1792b: 525 (*Staphylinus*) E: AU BE BY CT CZ DE EN FI FR GB GE HU IC IR IT LA LT  
 NL NR PL RO SB SK SL SP ST SV SZ UK A: ES FE IN MG SC TR WS NAR

*castanea* Gravenhorst, 1806: 207 (*Omaliium*)

*pulchra* Motschulsky, 1858h: 493

*rufa* Gravenhorst, 1802: 115 (*Omaliium*)

*seriata* LeConte, 1863: 55

*crenata japonica* Watanabe, 1990c: 145 A: JA

*cruentata* Mannerheim, 1830: 55 E: AU BE BH CR CT CZ DE FI FR GB GE GG GR HU IR IT LA LT MD NL NR  
 NT PL PO RO SB SK SL SP SV SZ UK "Caucasus" N: AG A: ES FE TR WS

*caucasica* Reitter, 1909a: 185

*clandestina* Luze, 1905c: 75

*ferruginea* Lacordaire, 1835: 477

*minuta* Luze, 1905c: 76

*sculpturata* Luze, 1905c: 77

*daisetsuzana* Watanabe, 1990c: 146 A: JA

*montana* Smetana, 1993: 71 A: TAI (Nenkaoshan)

*nivicola* Smetana, 1993: 74 A: TAI (Hsuehshan)

*quadrata* Zetterstedt, 1838: 53 (*Omaliium*) [RN] E: AU FI NR NT SV A: ES FE JA MG WS

*crenulata* Hatch, 1957: 62 (*Olophrum*)

*frankenhaeuseri* Mäklin, 1853: 194

*major* Luze, 1905c: 78

*patruelis* LeConte, 1863: 56

*pechlaneri* Scheerpeltz, 1947d: 263

*quadra* Zetterstedt, 1828: 54 (*Omaliium*) [HN]

genus *Acidota*, **nomen dubium**

*semisericea* Cameron, 1929b: 152 E: NR

genus *Altaiodromicus* Zerche, 1992b: 107 type species *Altaiodromicus schilenkovi* Zerche, 1992

*schilenkovi* Zerche, 1992b: 108 A: WS (Altai)

genus *Amphichroum* Kraatz, 1857d: 947 type species *Lathrimaeum canaliculatum* Erichson, 1840

*Stachygraphis* Horn, 1883: 285 type species *Stachygraphis maculata* Horn, 1883

*albanicum* Bernhauer, 1936g: 237 E: AL

*altivagans* Cameron, 1941a: 143 A: KA

*anthobioides* Champion, 1925b: 104 A: UP

*canaliculatum* Erichson, 1840: 871 (*Lathrimaeum*) [NP] E: AL AU BH CR CZ FR GE GR HU IT LU MC PL RO SB  
 SK SL SZ UK YU

*dentipes* Heer, 1839: 181 (*Omaliium*) [NO]

*dryophilum* Gistel, 1857a: 11 (*Deleaster*)

*tenuipes* Heer, 1839: 182 (*Omaliium*) [NO]

*hirtellum* Heer, 1839: 191 (*Acidota*) E: AU FR GE IT SZ

*miaoershanum* Watanabe, 1999d: 260 A: GUX

*milkense* Coiffait, 1984d: 385 A: NP

*monticola* Cameron, 1928h: 558 A: BT XIZ