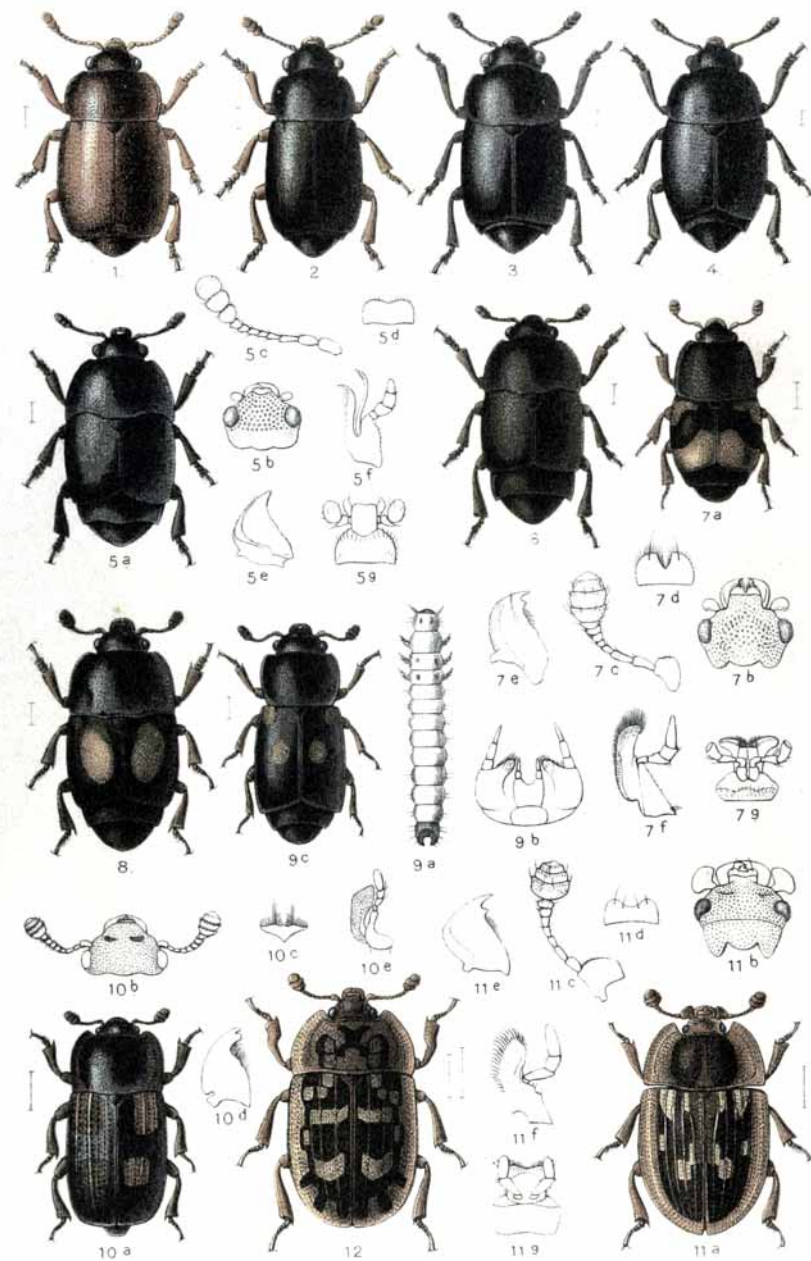
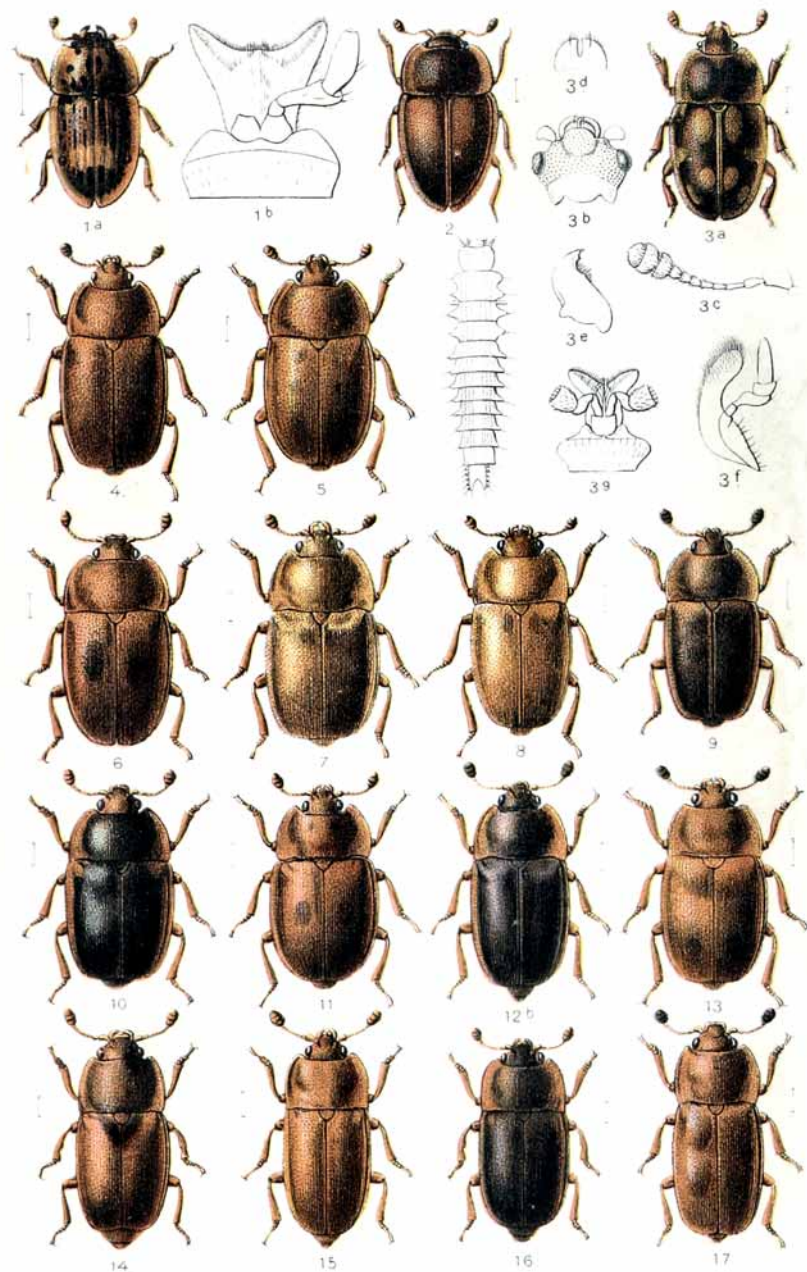


1. *Sphaerites glabratus*. 2. *Nemosoma elongatum*. 3. *Temnochila coerulea*. 4. *Tenebrioides mauritanicus*. 5. *Zimioma grossa*. 6. *Thymalus limbatus*. 7. *Byturus fumatus*. 8. *Cateretes pedicularius*, 9. *rufilabris*.

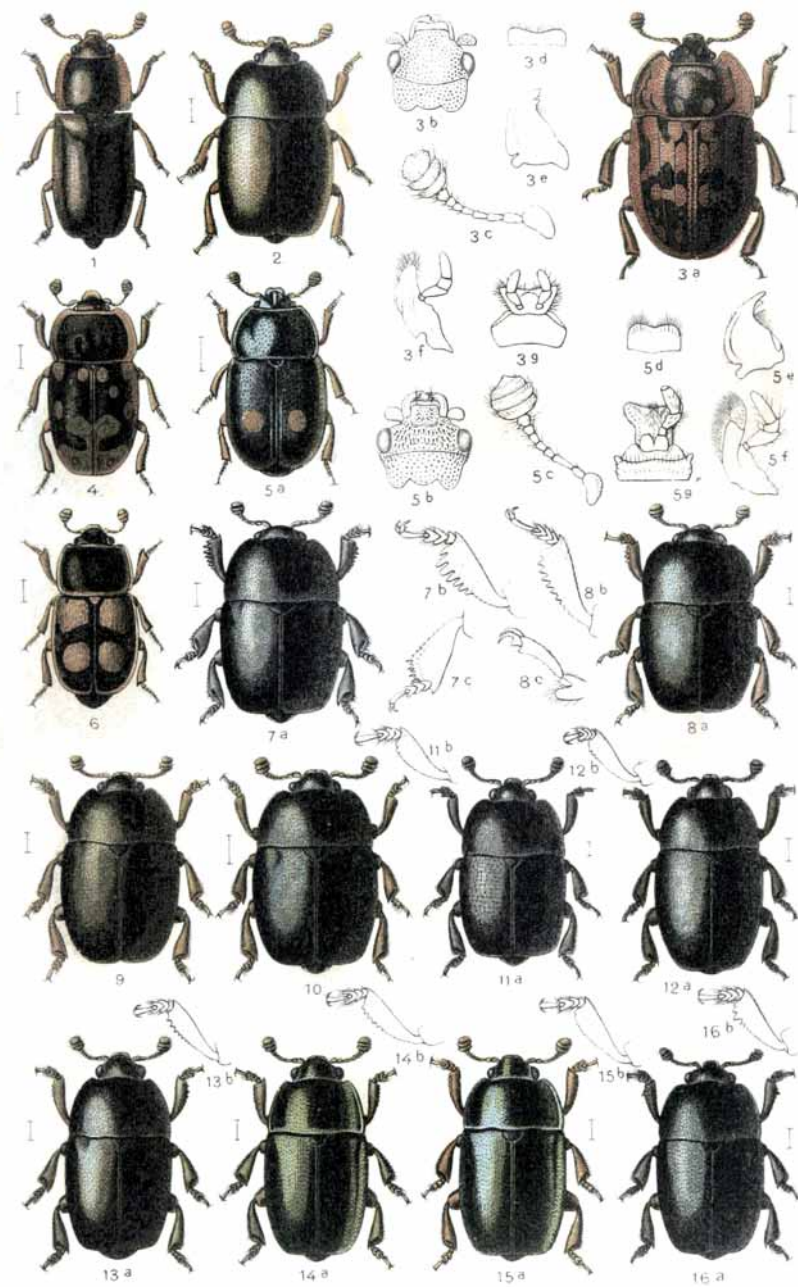


1. *Heterhelus scutellaris*, 2. *solani*. 3. *Brachypterus glaber*, 4. *urticae*. 5. *Heterostomus pulicarius*, 6. *villigeri*. 7. *Carpophilus hemipterus*, 8. *bipustulatus*, 9. *sexpustulatus*. 10. *Ipidia quadrimaculata*. 11. *Amphotis marginata*. 12. *Soronia punctatissima*.



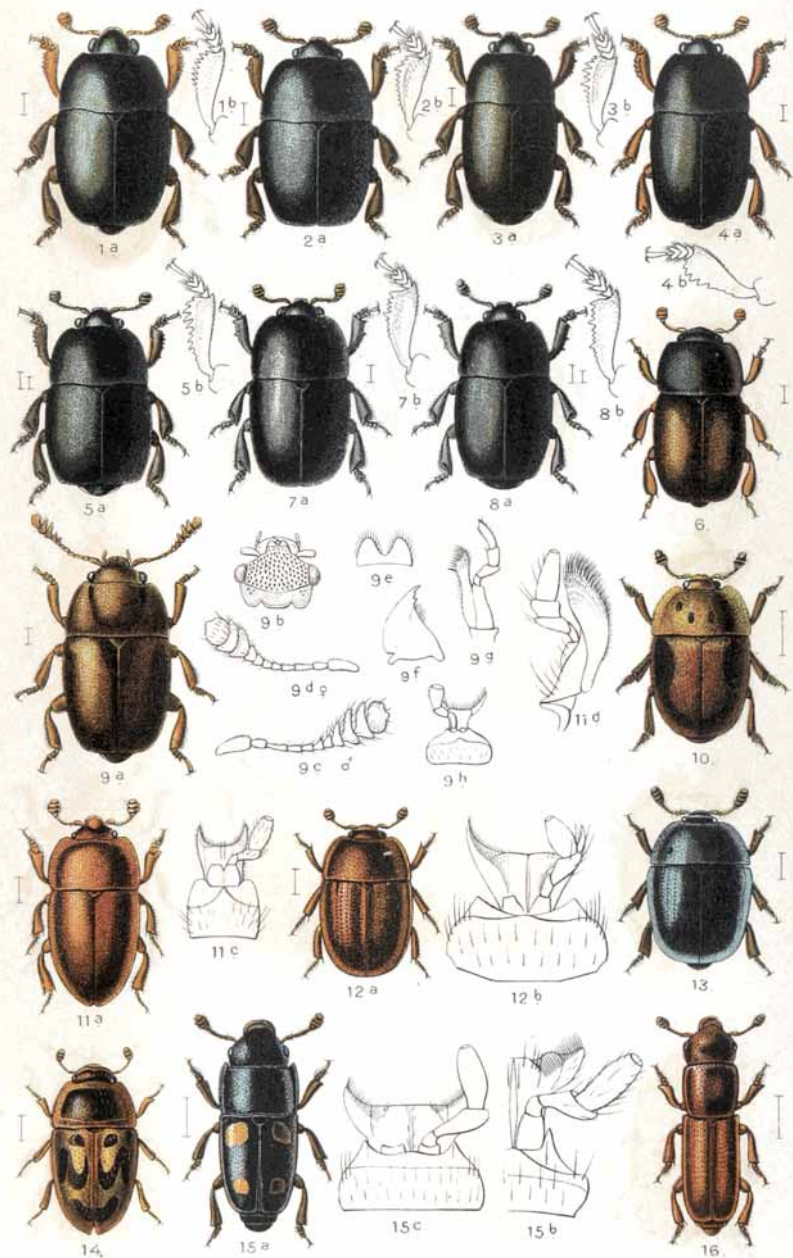


1. *Soronia grisea*. 2. *Epuraea limbata*. 3. *decemguttata*. 4. *melina*. 5. *depressa*. 6. a. *bisignata*. 7. *silacea*. 8. *deleta*. 9. *rufomarginata*. 10. *neglecta*. 11. *variegata*. 12. *obsoleta*. 13. *terminalis*. 14. *florea*. 15. *pusilla*. 16. *pygmaea*. 17. *oblonga*.

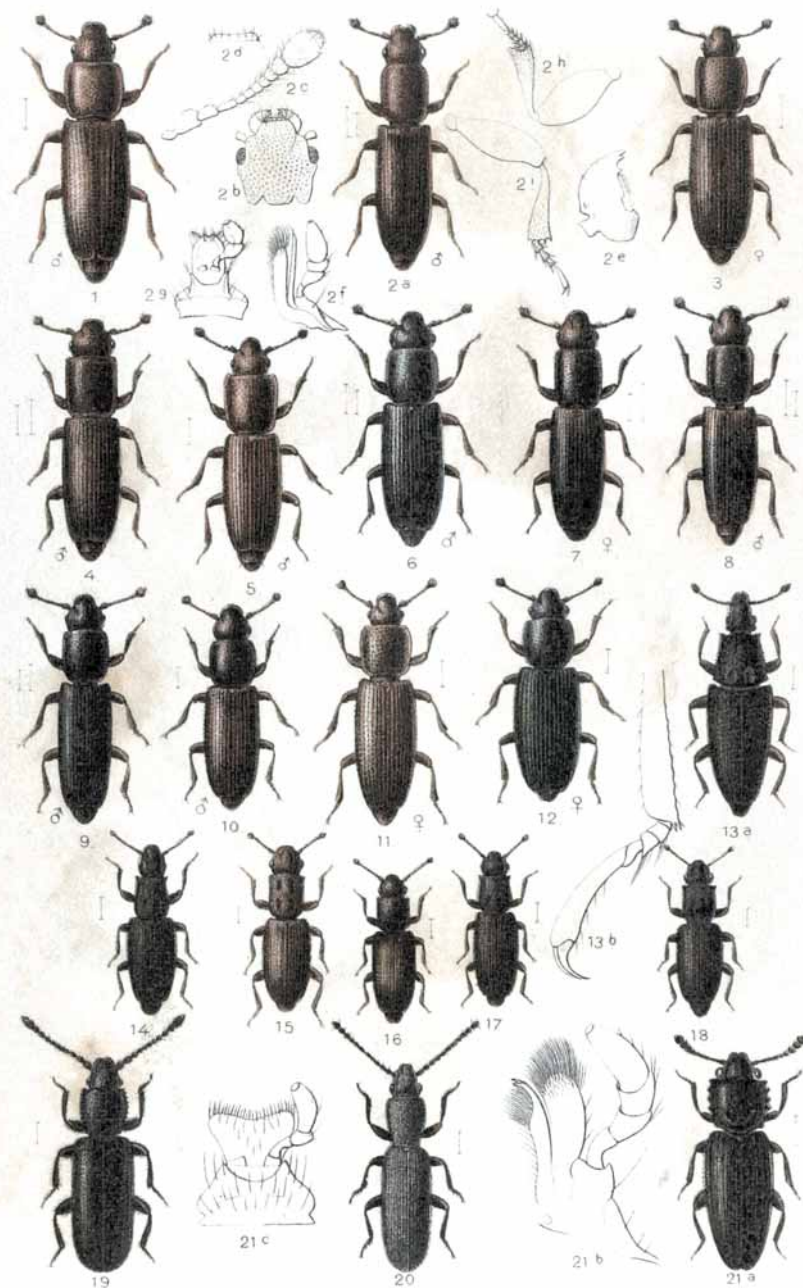


1. *Epuraea angustula*. 2. *melanocephala*. 3. *Omosita depressa*. 4. *colon*. 5. *Nitidula bipunctata*. 6. *carnaria*. 7. *Meligethes solidus*. 8. *brevis*. 9. *hebes*. 10. *rufipes*. 11. *subrugosus*. 12. *subaeneus*. 13. *coracinus*. 14. *aeneus*. 15. *viridescens*. 16. *viduatus*.



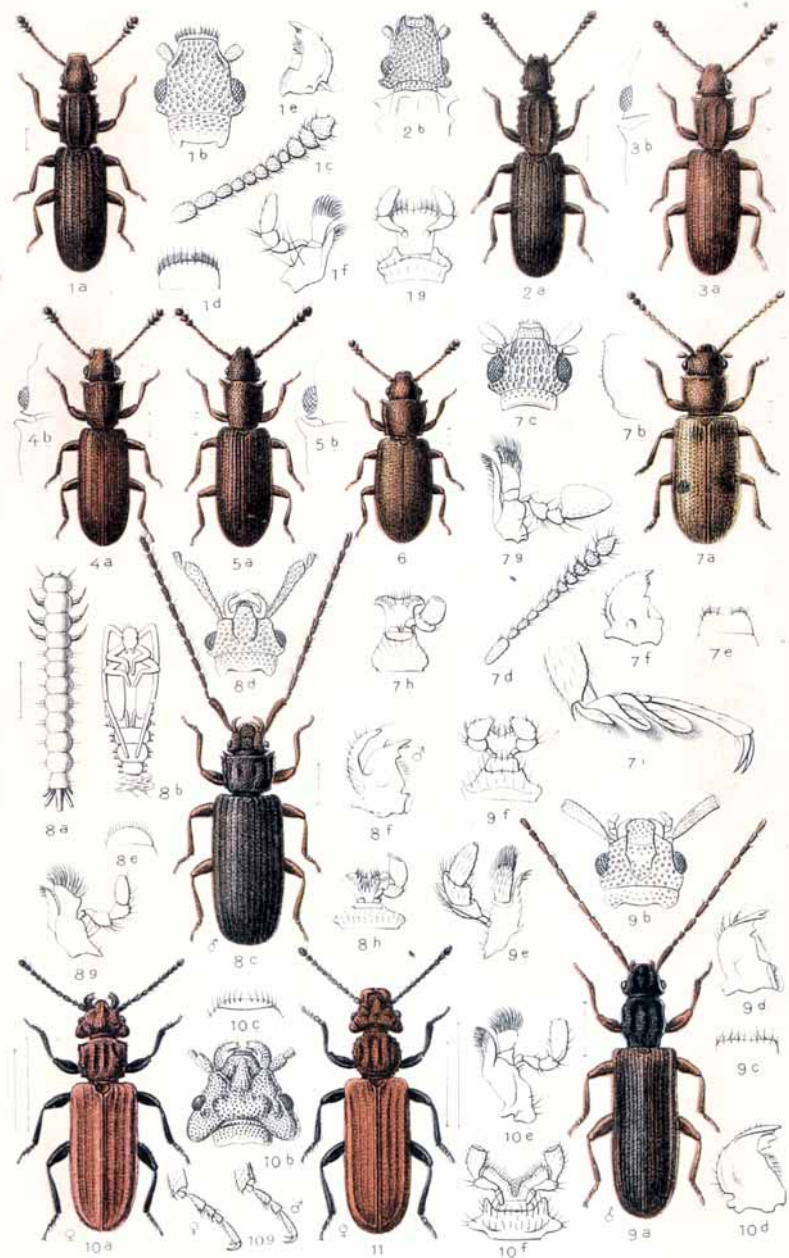


1. *Meligethes symphyti*, 2. *umbrosus*, 3. *picipes*, 4. *flavipes*, 5. *tristis*, 6. *discoideus*, 7. *distinctus*, 8. *exilis*. 9. *Pria dulcamarae*. 10. *Cychramus quadripunctatus*. 11. *Thaly-cra fervida*, 12. *Pocadius ferrugineus*. 13. *Cyllodes ater*. 14. *Cryptarcha imperialis*. 15. *Glyschrochilus 4-pustulatus*. 16. *Pityophagus ferrugineus*.

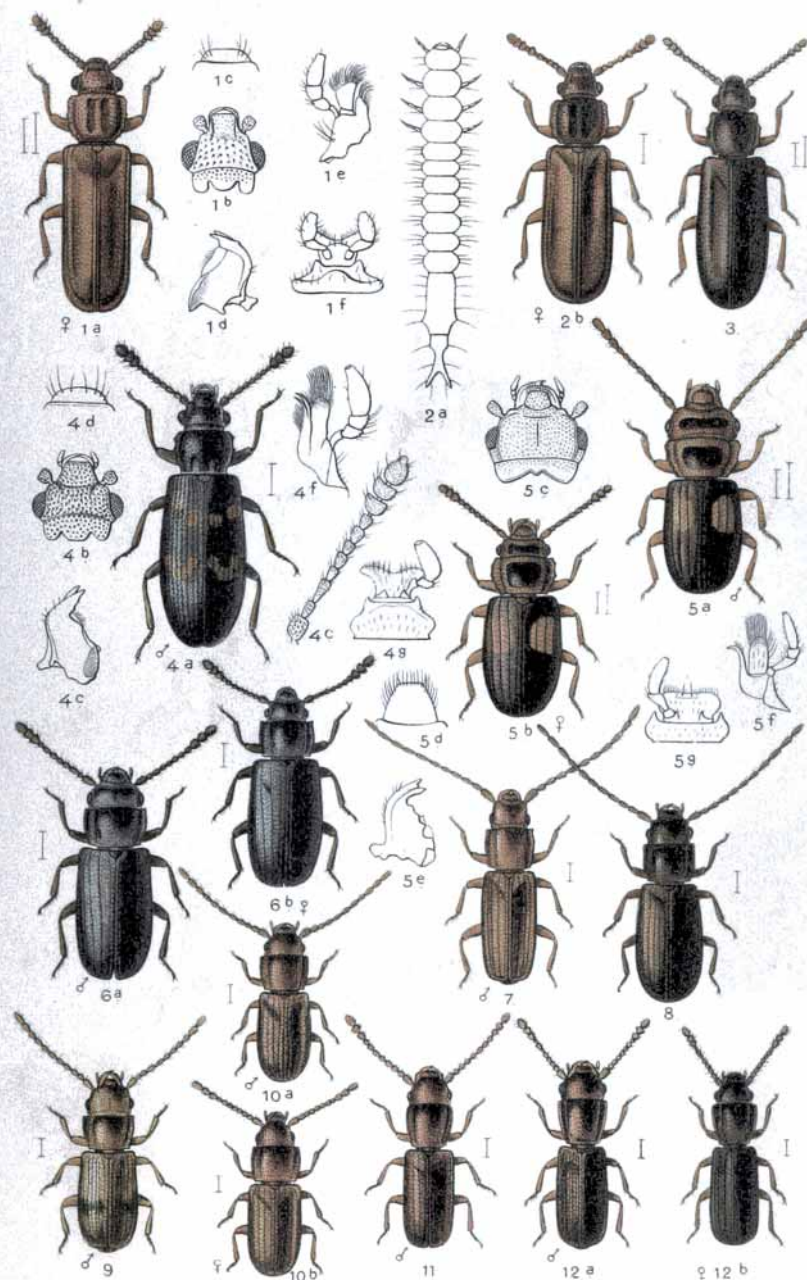


1. *Rhizophagus grandis*, 2. *depressus*, 3. *ferrugineus*, 4. *paralocollis*, 5. *perforatus*, 6. *politus*, 7. *nitidulus*, 8. *dispar*, 9. *bipustulatus*, 10. *parvulus*, 11. *cribratus*, 12. *aeneus*. 13. *Monotoma conicicollis*, 14. *angusticollis*, 15. *quadrifoveolata*, 16. *bicolor*, 17. *spini-collis*, 18. *picipes*. 19. *Airaphilus geminus*, 20. *elongatus*. 21. *Nausibius clavicornis*.



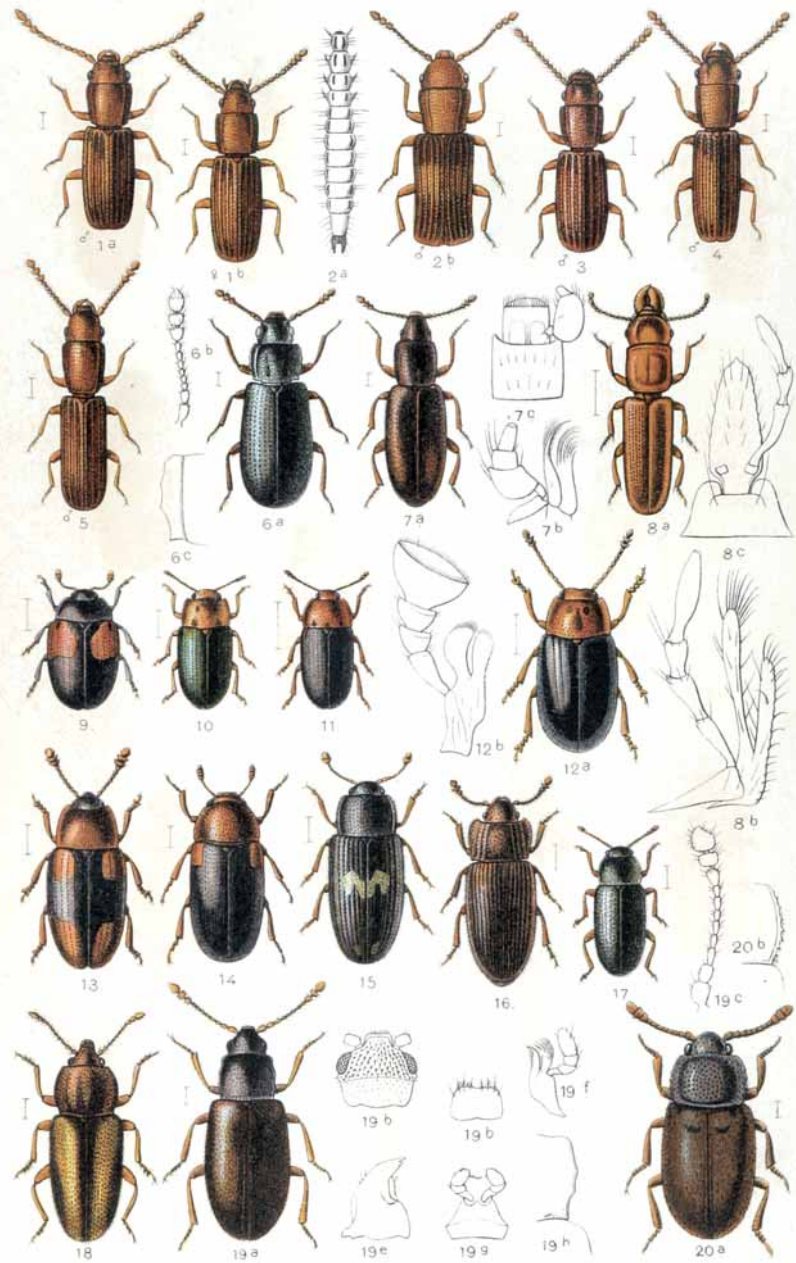


1. *Oryzaepphilus surinamensis*, 2. *v. bicornis*, 3. *Silvanus bidentatus*, 4. *unidentatus*, 5. *Silvanoprus fagi*, 6. *Cathartus advena*, 7. *Psammoecus bipunctatus*, 8. *Uleiota planata*, 9. *Dendrophagus crenatus*, 10. *Cucujus cinnaberinus*, 11. *haematodes*.

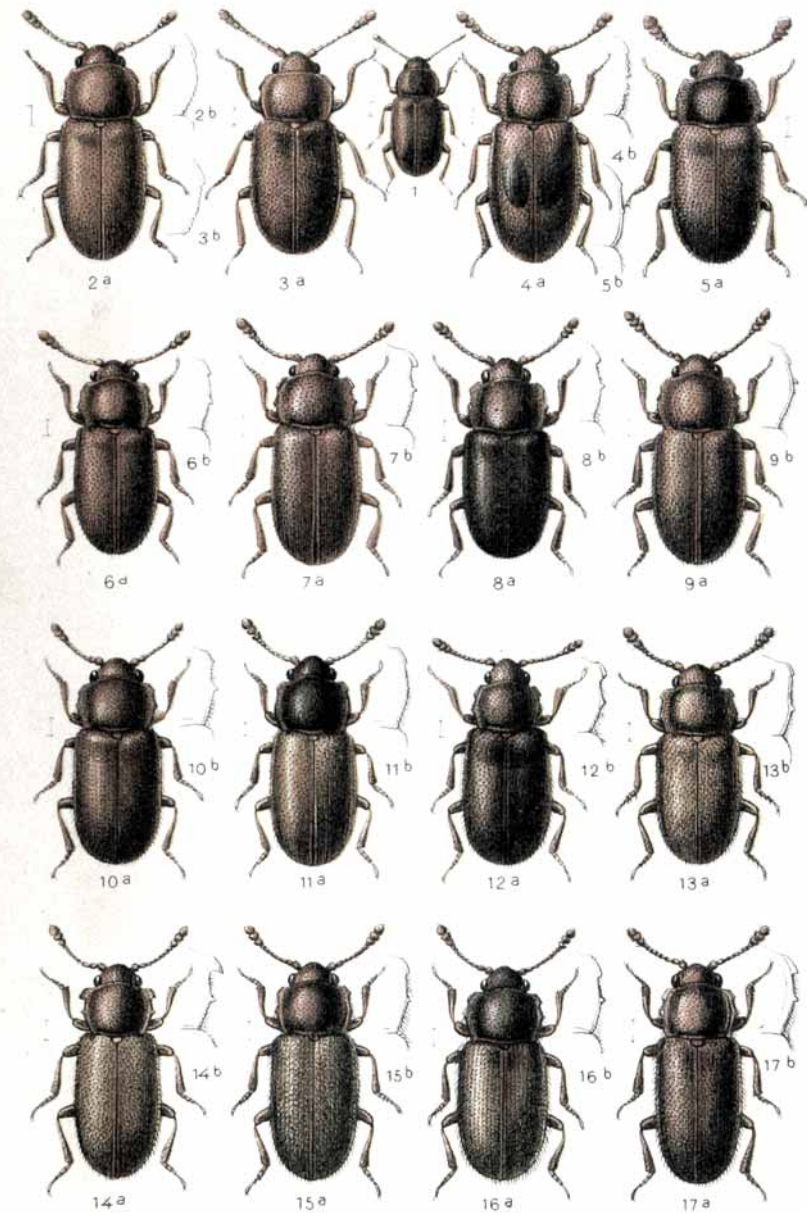


1. *Pediacus depressus*, 2. *dermestoides*, 3. *fuscus*, 4. *Phloeostichus denticollis*, 5. *Laemophloeus monilis* ♂ ♀, 6. *muticus* ♂ ♀, 7. *testaceus*, 8. *castaneus*, 9. *bimaculatus*, 10. *minutus* ♂ ♀, 11. *ferrugineus*, 12. *ater* ♂ ♀.



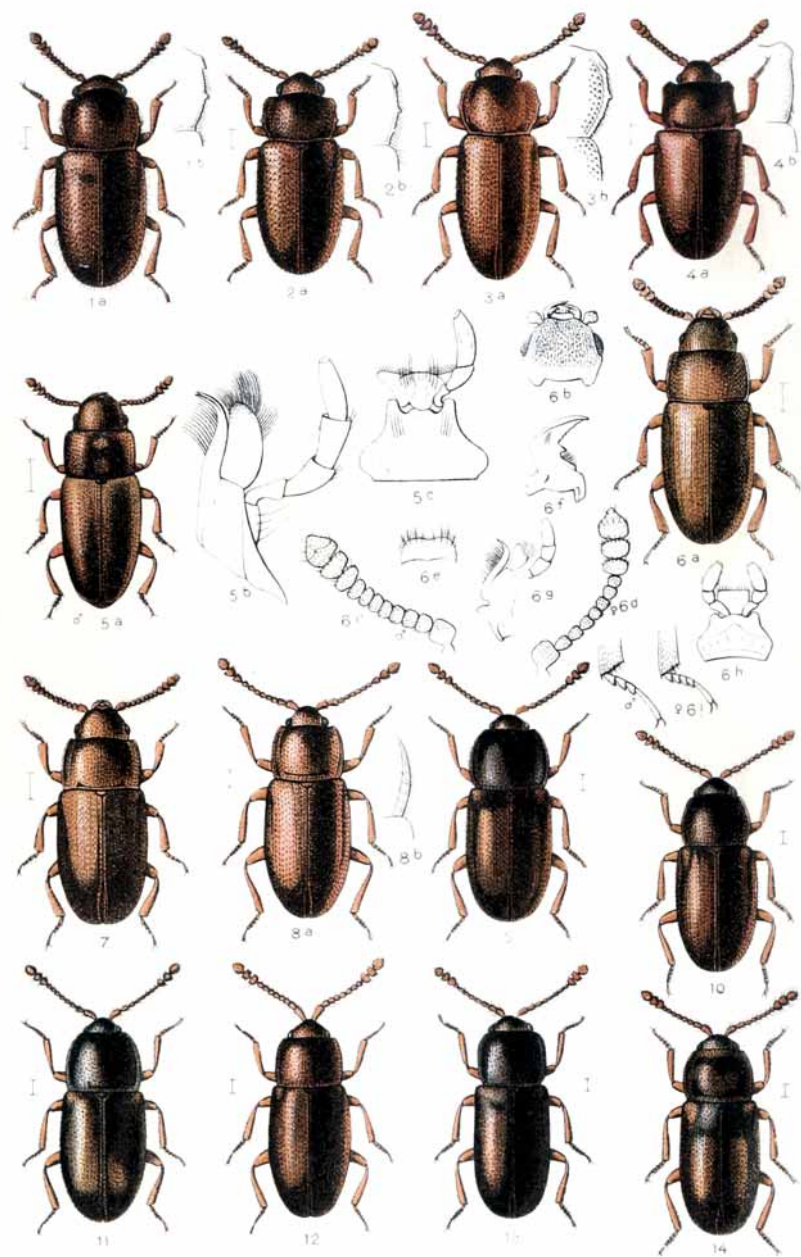


1. *Laemophloeus duplicatus* ♂ ♀, 2. *fractipennis*, 3. *corticinus*, 4. *alternans*, 5. *clematidis*. 6. *Lathropus sepicola*. 7. *Hypocopus lathridioides*. 8. *Prostomis mandibularis*. 9. *Tritoma bipustulata*. 10. *Triplax aenea*, 11. *russica*, 12. *scutellaris*. 13. *Combocerus glaber*. 14. *Dacne bipustulata*. 15. *Diphylus lunatus*, 16. *fagi*. 17. *Teimatophilus caricis*, 18. *sparganii*. 19. *Paramecosoma melanocephalum*. 20. *Emphyllus glaber*.

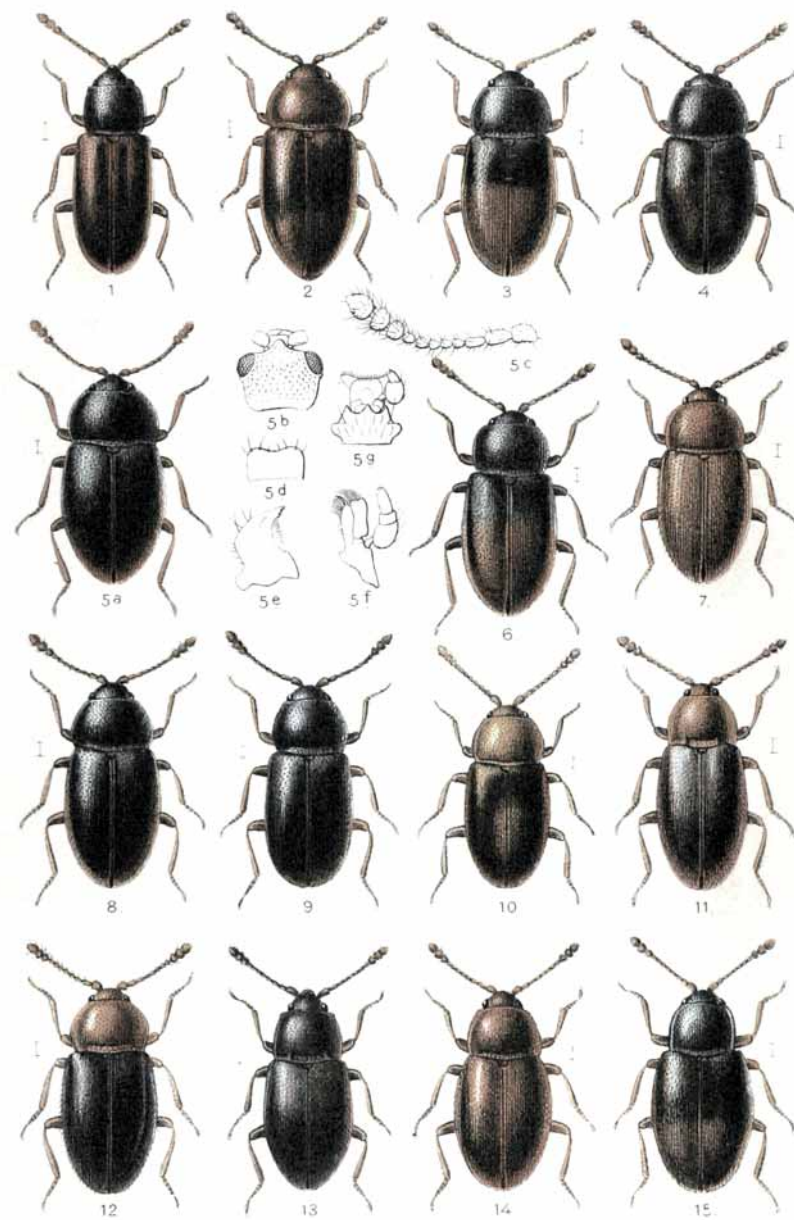


1. *Pteryngium crenatum*. 2. *Micrambe abietis*, 3. *vini*. 4. *Cryptophagus bimaculatus*, 5. *pubescens*, 6. *subdepressus*, 7. *badius*, 8. *scanicus*, 9. *saginat*, 10. *dentatus*, 11. *scutellatus*, 12. *dorsalis*, 13. *distinguendus*, 14. *acutangulus*, 15. *cellaris*, 16. *affinis*, 17. *pilosus*



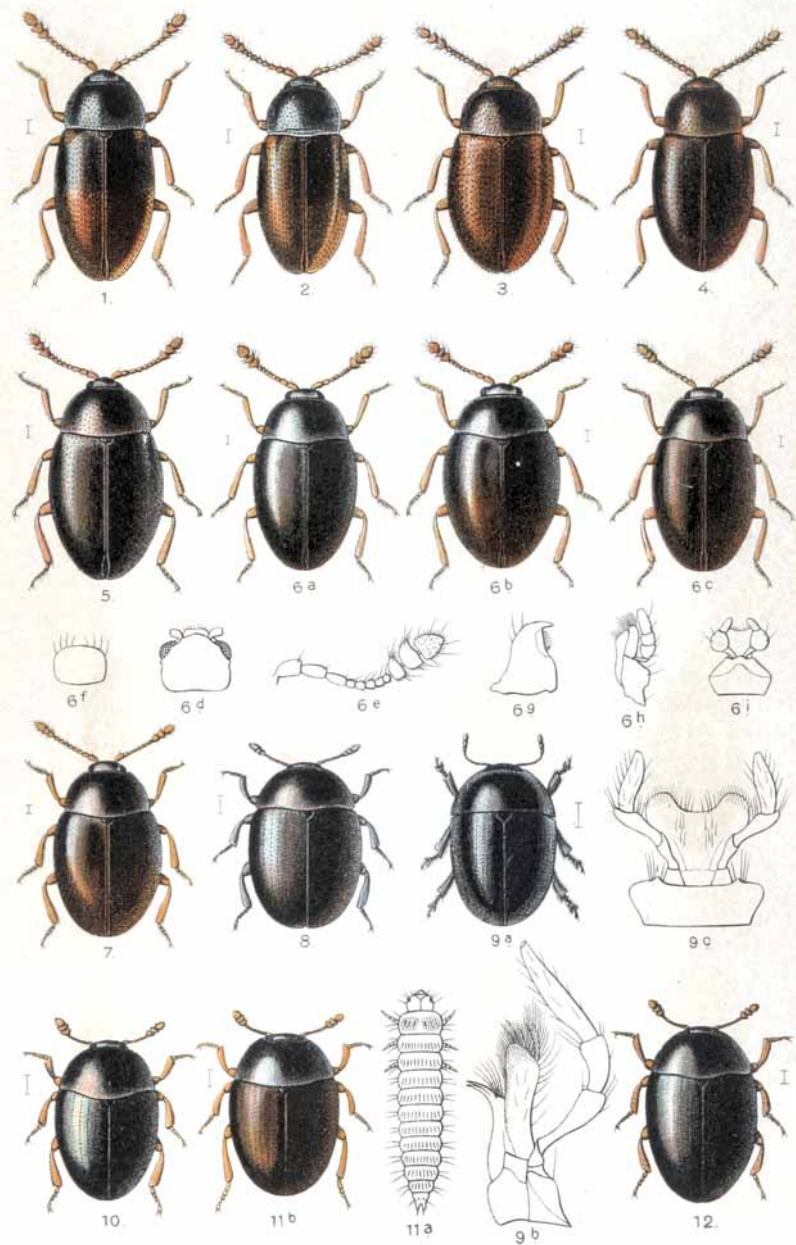


1. *Cryptophagus lycoperdi*, 2. *setulosus*, 3. *Schmidti*, 4. *Emphylus glaber*. 5. *Antherophagus nigricornis*, 6. *silaceus*, 7. *pallens*. 8. *Caenoscellis subdeplanata*. 9. *Atomaria fimetarii*, 10. *nigriventris*, 11. *fuscicollis*, 12. *diluta*, 13. *linearis*, 14. *alpina*.

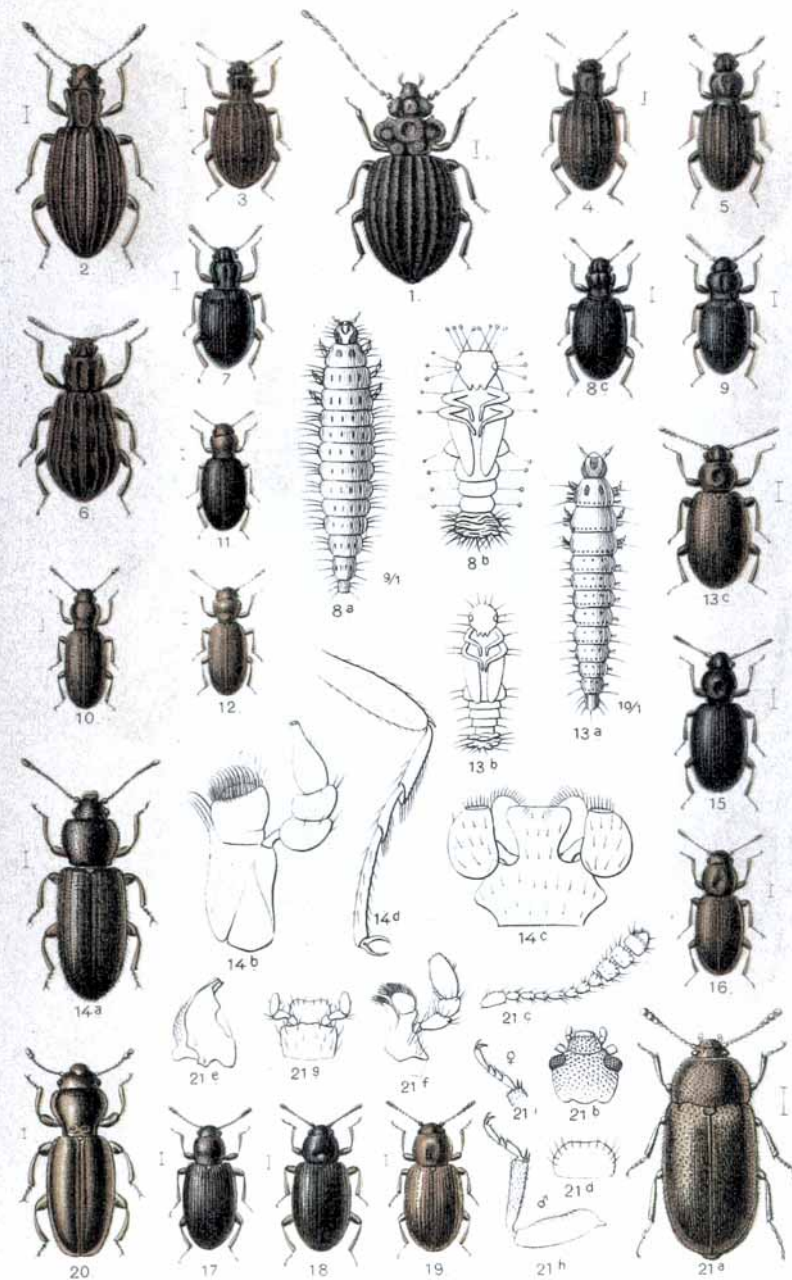


1. *Atomaria proluxa*, 2. *ornata*, 3. *mesomelaena*, 4. *gutta*, 5. *gibbula*, 6. *nitidula*, 7. *atricapilla*, 8. *fuscata*, 9. *fuscipes*, 10. *pusilla*, 11. *munda*, 12. *nigripennis*, 13. *impressa*, 14. *gravidula*, 15. *ruficornis*.



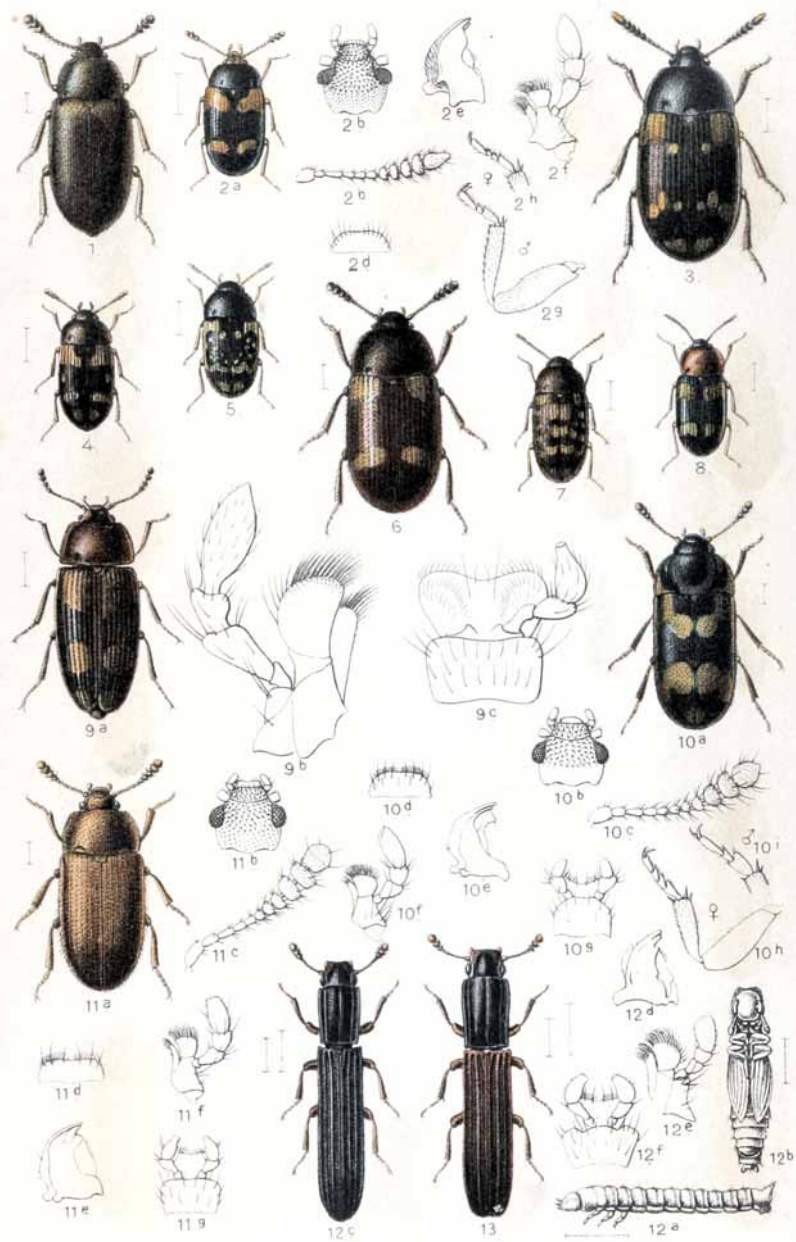


1. *Atomaria analis*, 2. *cognata*, 3. *turgida*, 4. *apicalis*. 5. *Ootypus globosus*, 6. *Ephistemus globulus*, 6<sup>b</sup>. *a. dimidiatus*, 6<sup>c</sup>. *a. ovulum*, 7. *exiguus*. 8. *Phalacrus caricis*, 9. *grossus*. 10. *Olibrus flavicornis*, 11. *affinis*, 12. *pygmaeus*.

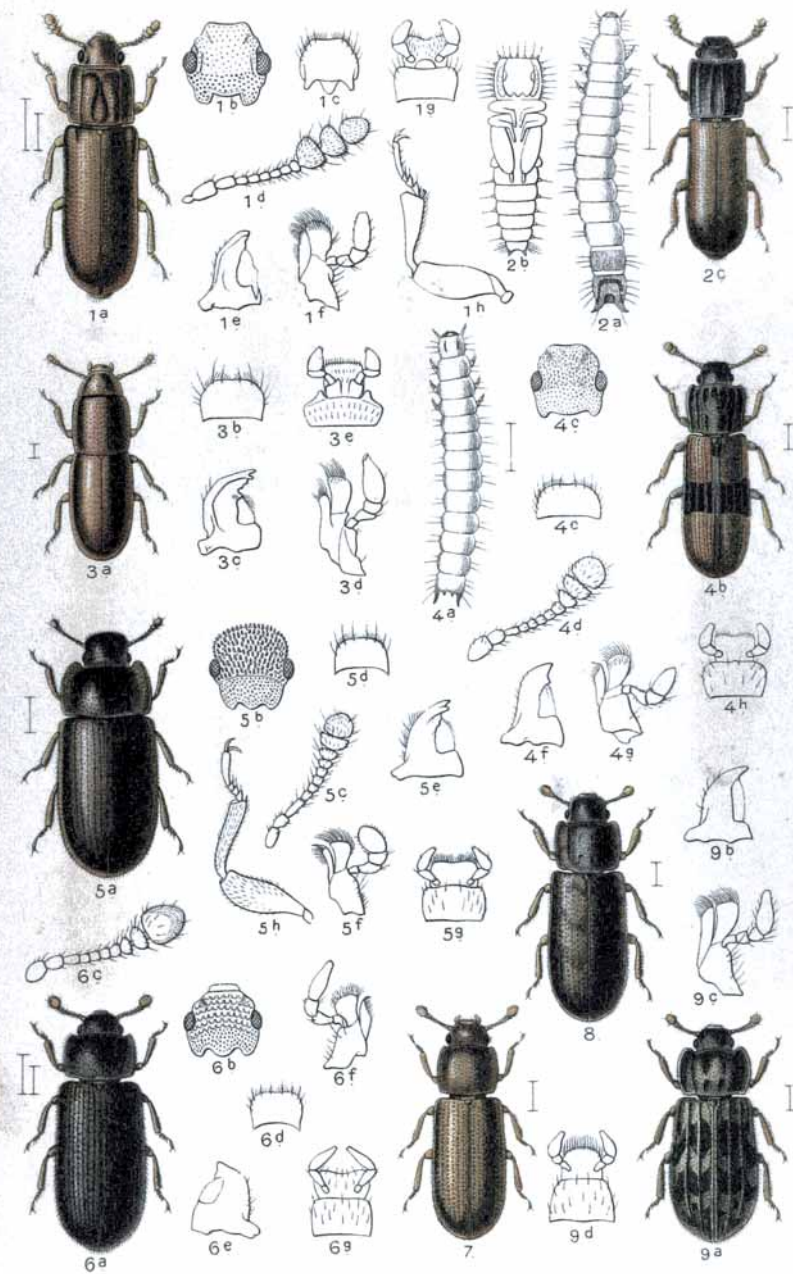


1. *Dasycerus sulcatus*. 2. *Lathridius angusticollis*, 3. *alternans*, 4. *rugicollis*, 5. *strictus*, 6. *nodifer*. 7. *Enicmus hirtus*, 8. *minutus*, 9. *rugosus*. 10. *Cartodere elongata*, 11. *ruficollis*, 12. *filiformis*. 13. *Corticaria pubescens*, 14. *crenulata*, 15. *longicornis*, 16. *longicollis*. 17. *Corticarina gibbosa*, 18. *fuscula*, 19. *truncatella*. 20. *Holoparamesus caularum*. 21. *Triphyllus bicolor*.



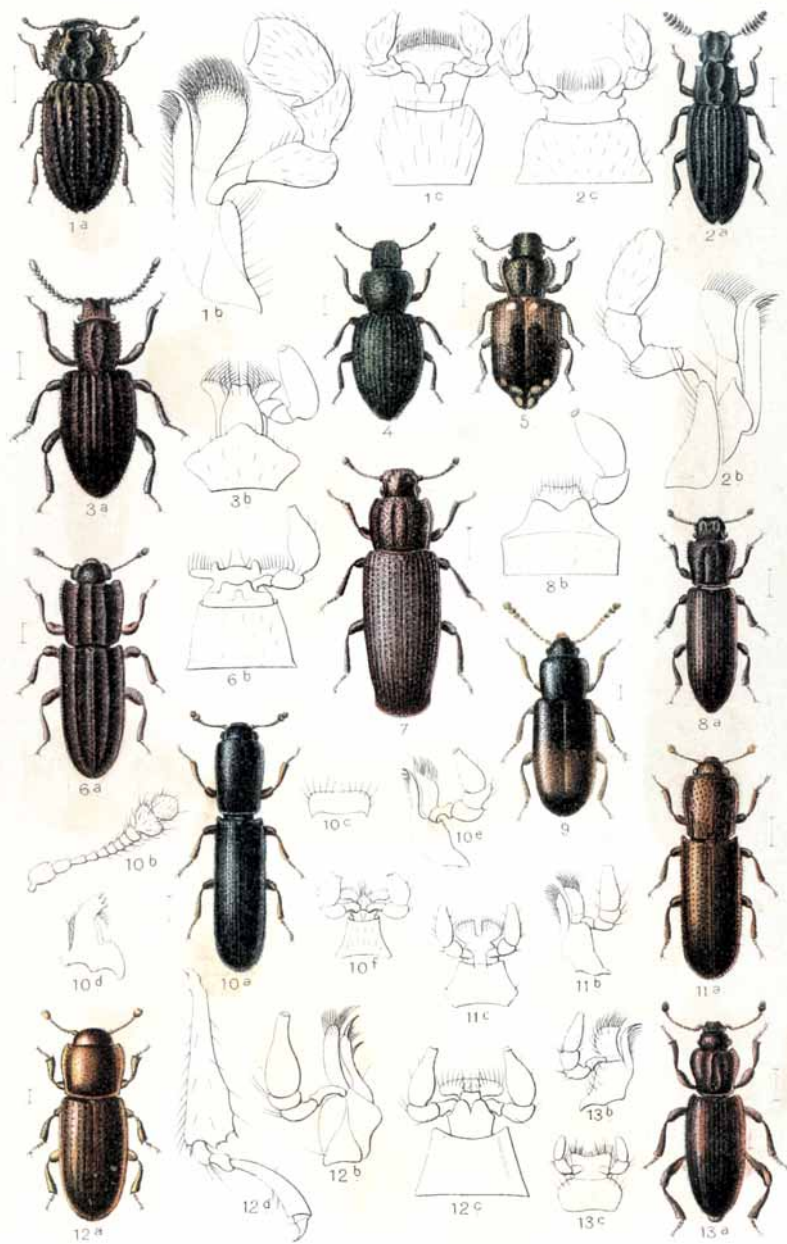


1. *Pseudotriphyllus suturalis*. 2. *Mycetophagus quadripustulatus*. 3. *decempunctatus*.  
4. *piceus*, 5. *atomarius*, 6. *quadriguttatus*, 7. *multipunctatus*, 8. *fulvicollis*, 9. *populi*.  
10. *Litargus connexus*. 11. *Typhaea fumata*. 12. *Colydium elongatum*, 13. *filiforme*.

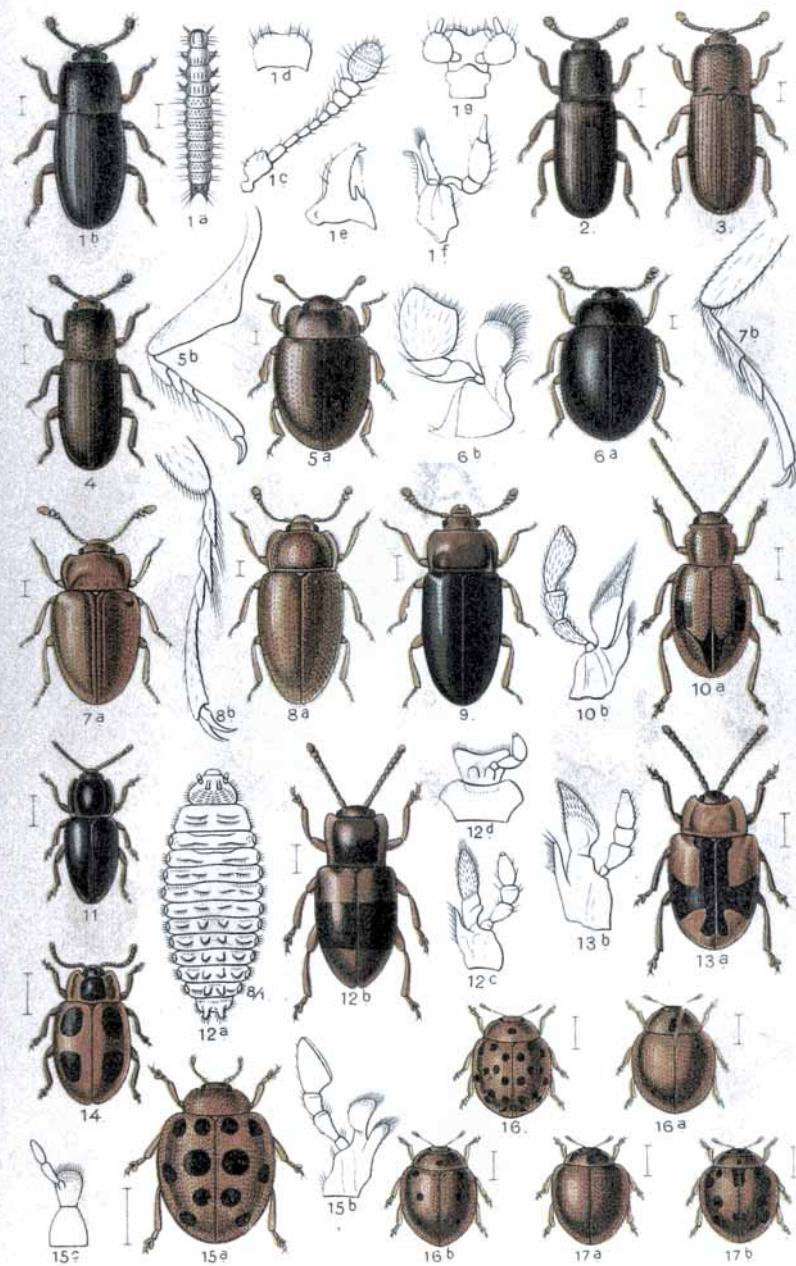


1. *Aulonium trisulcum*, 2. *ruficorne*. 3. *Aglenus brunneus*. 4. *Ditoma crenata*.  
5. *Colobicus marginatus*. 6. *Synchita humeralis*, 7. *mediolanensis*. 8. *Cicones pictus*,  
9. *variegatus*.



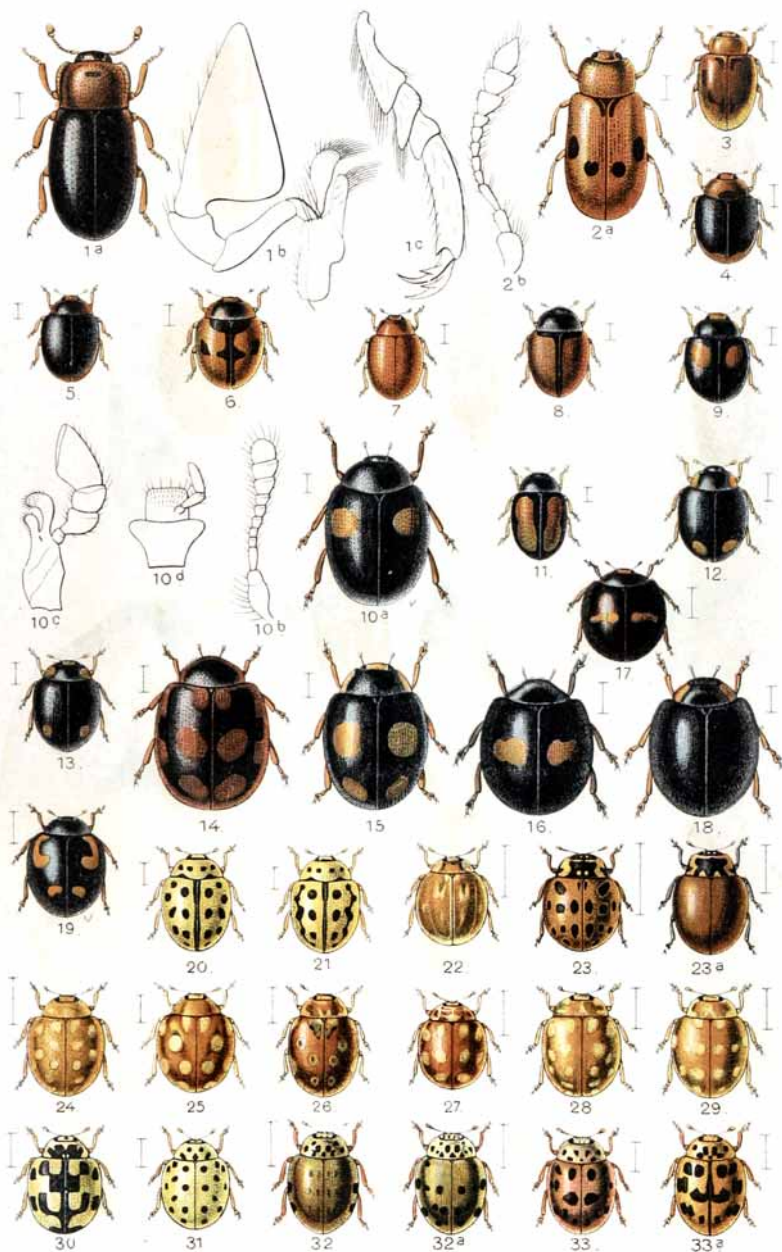


1. *Endophloeus* Markovichianus. 2. *Orthocerus* clavicornis. 3. *Apistus* Rondanii. 4. *Diodesma* subterranea. 5. *Coxelus* pictus. 6. *Langelandia* anophthalma. 7. *Pycnomeris* terebrans. 8. *inexpectus*. 9. *Myrmecoxenus* subterraneus. 10. *Teredus* cylindricus. 11. *Oxylaemus* variolosus. 12. *Anommatus* Reitteri. 13. *Bothrideres* contractus.

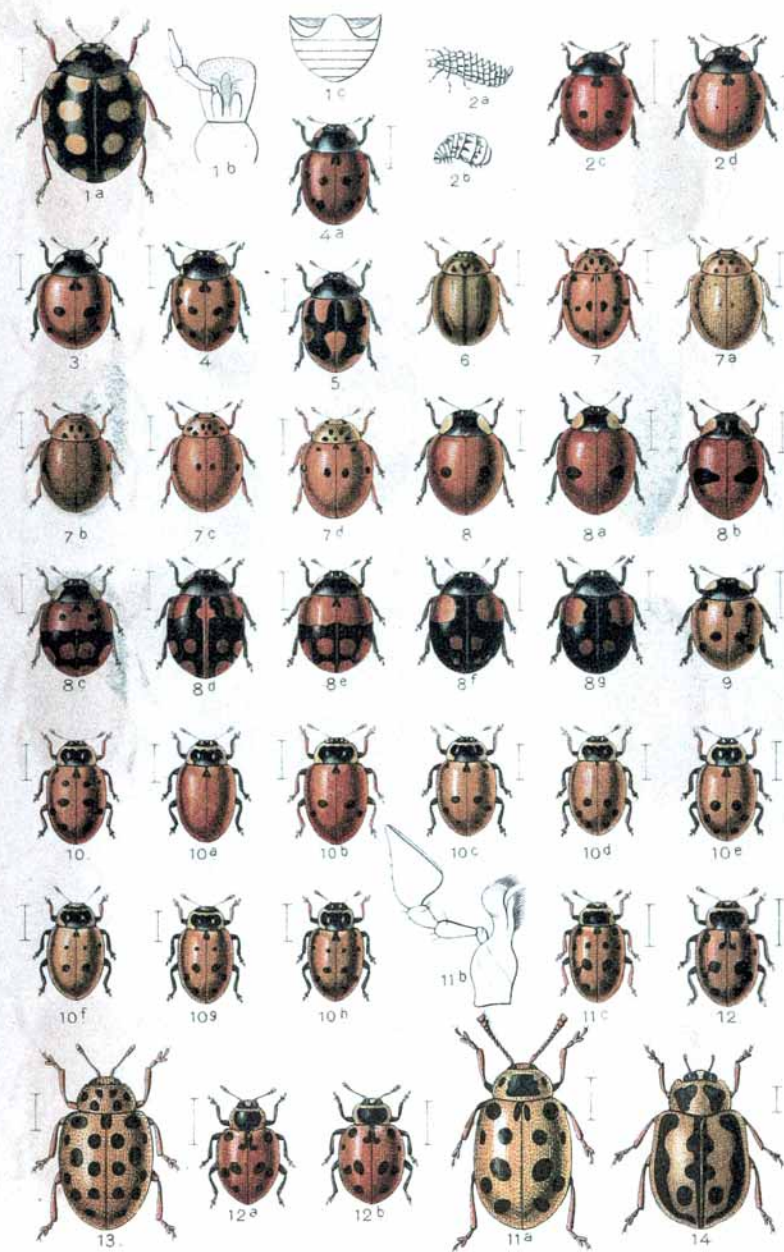


1. *Cerylon* *histeroides*, 2. *ferrugineum*, 3. *impressum*, 4. *deplanatum*. 5. *Murmidius* *ovatus*. 6. *Sphaerosoma* *pilosum*. 7. *Symbiotes* *gibberosus*. 8. *Mycetaea* *hirta*. 9. *Leiestes* *seminigra*. 10. *Dapsa* *denticollis*. 11. *Lycoperdina* *bovistae*, 12. *succincta*. 13. *Mycetina* *cruciata*. 14. *Endomychus* *coccineus*. 15. *Epilachna* *chrysomelina*. 16. *Subcoccinella* *24 punctata*, 16<sup>a</sup>. v. *saponariae*, 16<sup>b</sup>. v. *4notata*. 17. *Cyngētis* *impunctata*, 17<sup>a</sup>. v. *palustris*.



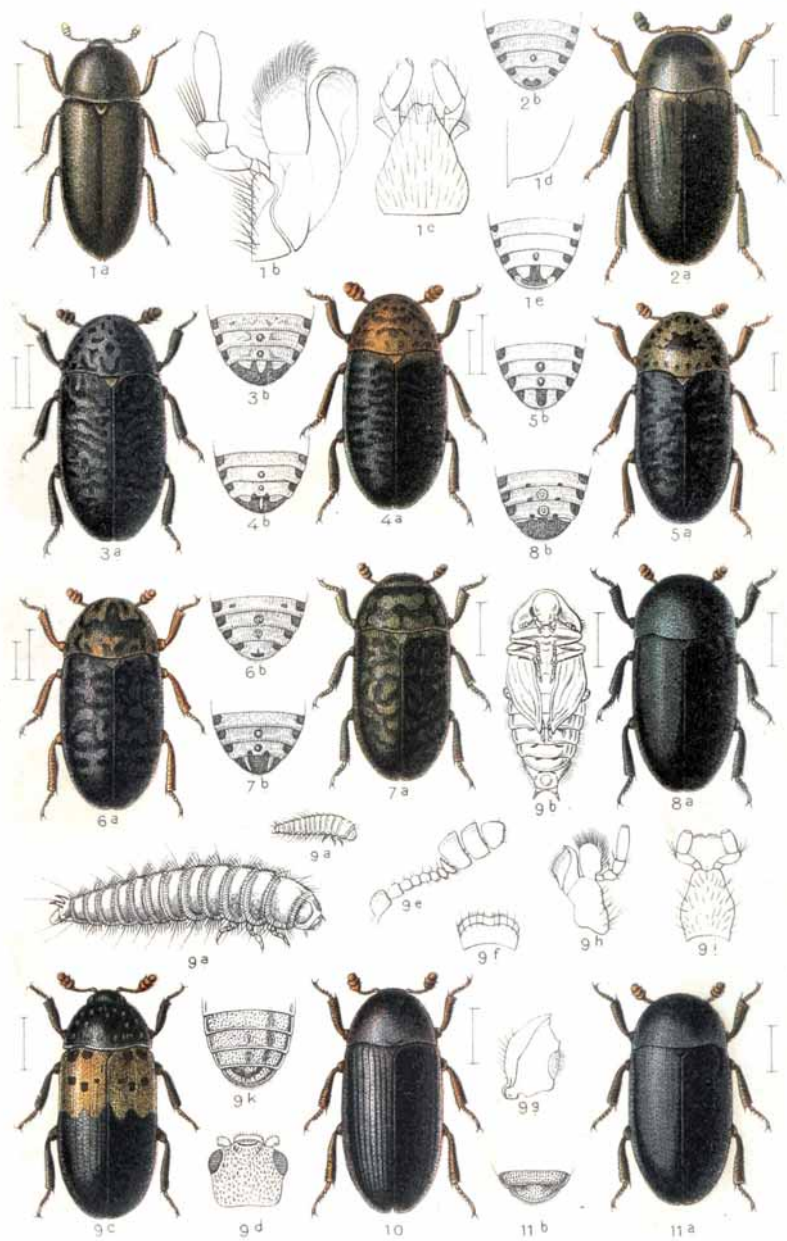


1. *Lithophilus connatus*. 2. *Coccidula scutellata*. 3. *Rhizobius litura*. 4. *Scymnus ferrugatus*. 5. *auritus*. 6. *subvillosus*. 7. *impexus*. 8. *suturalis*. 9. *frontalis*. 10. *Apetzi*. 11. *Redtenbacheri*. 12. *Hyperaspis reppensis*. 13. *campestris*. 14. *Novius cruentatus*. 15. *Platynaspis luteorubra*. 16. *Chilocorus similis*. 17. *bipustulatus*. 18. *Exochomus flavipes*. 19. *4pustulatus*. 20. *Micraspis sedecimpunctata*. 21. a. *12punctata*. 22. *Paramyia oblongoguttata*. 23. *Anatis ocellata*. 23<sup>a</sup>. a. *bicolor*. 24. *Halyzia sedecimguttata*. 25. *12guttata*. 26. *28guttata*. 27. *decemguttata*. 28. *15guttata*. 29. *14guttata*. 30. *14punctata*. 31. *22punctata*. 32. *Coccinella quadripunctata*. 32<sup>a</sup>. v. *16punctata*. 33. *conglobata*. 33<sup>a</sup>. v. *gemella*.

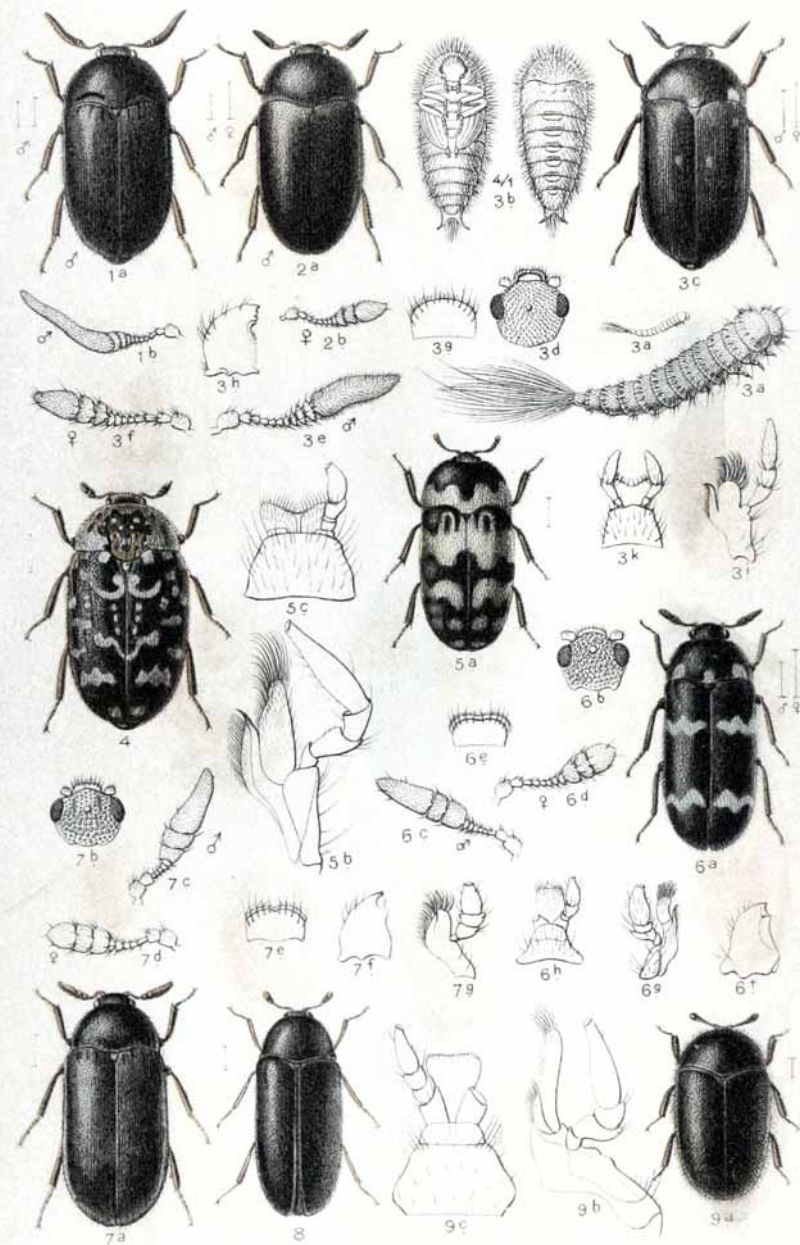


1. *Coccinella 14pustulata*. 2. *7punctata*. 2<sup>a</sup>. v. *externepunctata*. 3. *5punctata*. 4. *11punctata*. 4<sup>a</sup>. v. *9punctata*. 5. *hieroglyphica*. 6. *Aphidecta oblitterata*. 7. *Cocc. 10punctata*. 7<sup>a</sup>. v. *lutea*. 7<sup>b</sup>. v. *subpunctata*. 7<sup>c</sup>. v. *4punct.*. 7<sup>d</sup>. v. *6punct.*. 8. *bipunctata*. 8<sup>a</sup>. v. *bisculata*. 8<sup>b</sup>. a. *unifasciata*. 8<sup>c</sup>. a. *annulata*. 8<sup>d</sup>. a. *pantherina*. 8<sup>e</sup>. a. *inaequalis*. 8<sup>f</sup>. a. *6pustulata*. 8<sup>g</sup>. a. *4maculata*. 9. *Semiladalia 11notata*. 10. *Hippodamia variegata*. 10<sup>a</sup>. a. *immaculata*. 10<sup>b</sup>. a. *5macul.*. 10<sup>c</sup>. a. *obversepunct.*. 10<sup>d</sup>. a. *6punct.*. 10<sup>e</sup>. a. *constellata*. 10<sup>f</sup>. a. *arenaria*. 10<sup>g</sup>. a. *biconstell.*. 10<sup>h</sup>. a. *neglecta*. 11. *13punctata*. 11<sup>a</sup>. a. *spissa*. 12. *7maculata*. 12<sup>a</sup>. a. *oblonga*. 12<sup>b</sup>. a. *Paykulli*. 13. *Anisosticta 19punctata*. 14. *strigata*.



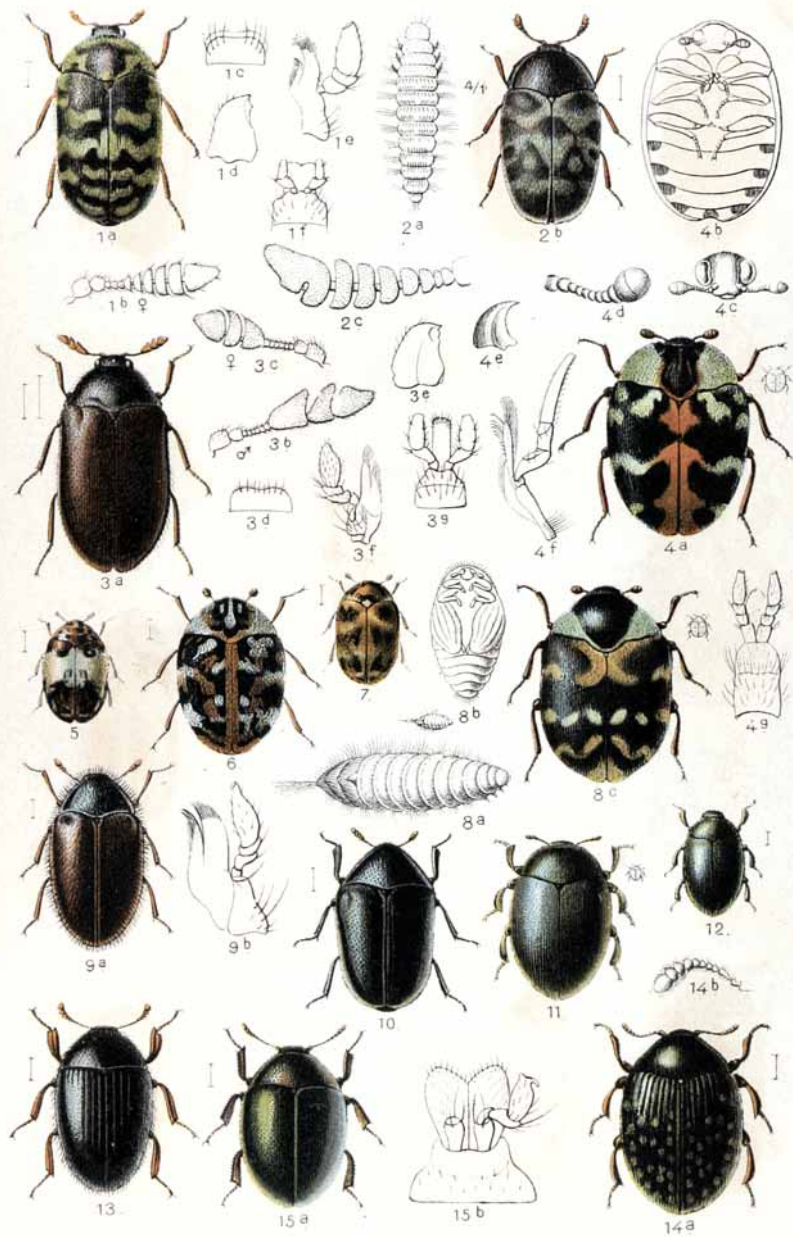


1. *Dermestes vulpinus*, 2. *Frischi*, 3. *murinus*, 4. *undulatus*, 5. *atomarius*, 6. *Erichsoni*, 7. *mustelinus*, 8. *lanarius*, 9. *lardarius*, 10. *bicolor*, 11. *ater*.

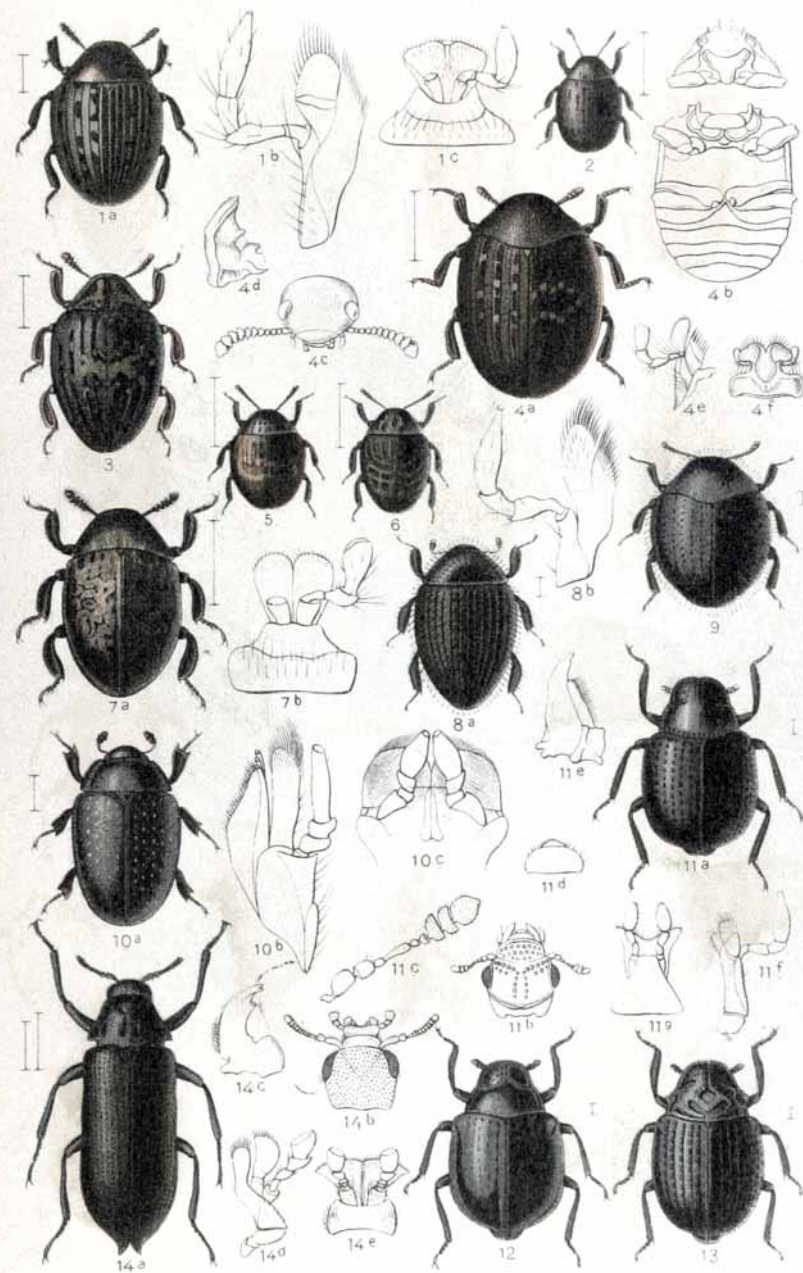


1. *Attagenus* Schäfferi, 2. *piceus* a. *megatoma*, 3. *pellio*, 4. *pantherinus*, 5. *trifasciatus*, 6. *Megatoma undata*, 7. *Globicornis marginata*, 8. *nigripes*, 9. *Phradonoma villosulum*.



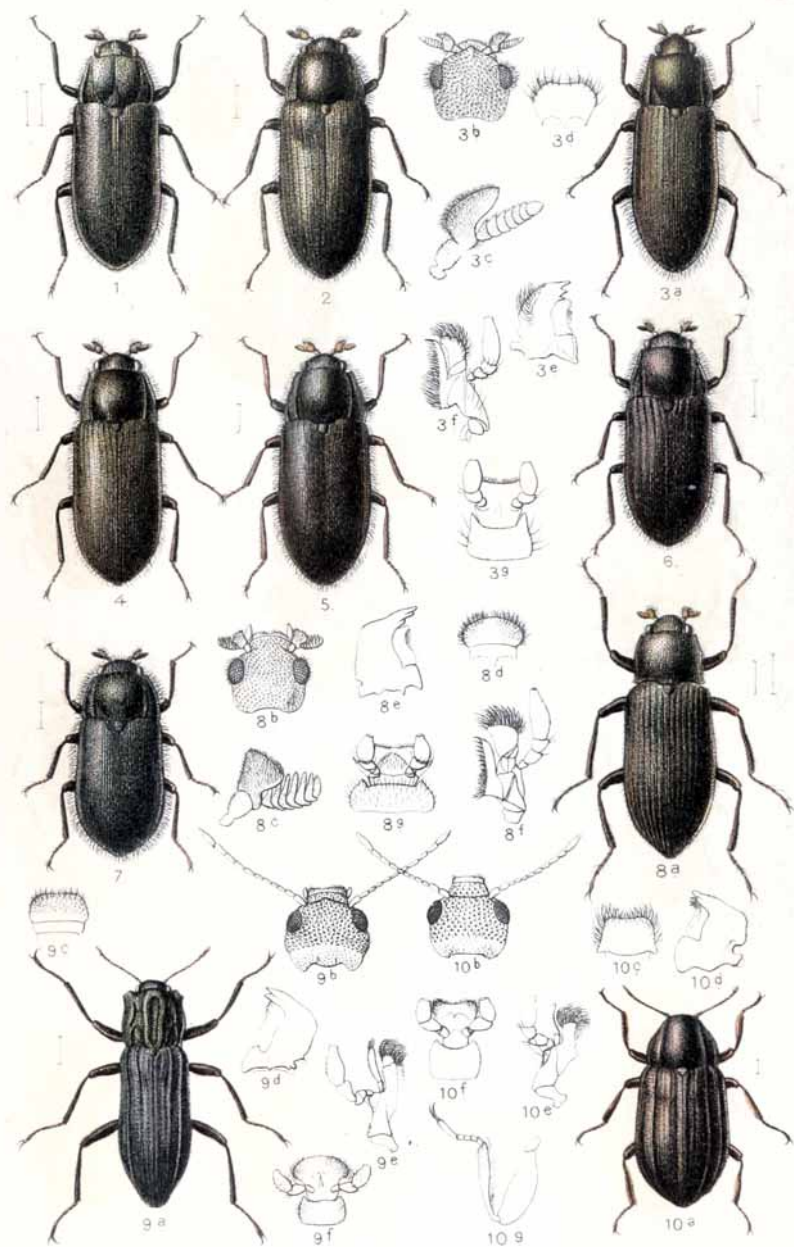


1. *Trogoderma versicolor*, 2. *nigrum*. 3. *Ctenias serra*. 4. *Anthrenus scrophulariae*, 5. *pimpinellae*, 6. *festivus*, 7. *museorum*, 8. *verbasci*. 9. *Trinodes hirtus*. 10. *Orphilus niger*. 11. *Limnichus pygmaeus*, 12. *sericeus*. 13. *Simplicaria semistriata*, 14. *maculosa*. 15. *Lamprobyrrhulus nitidus*.

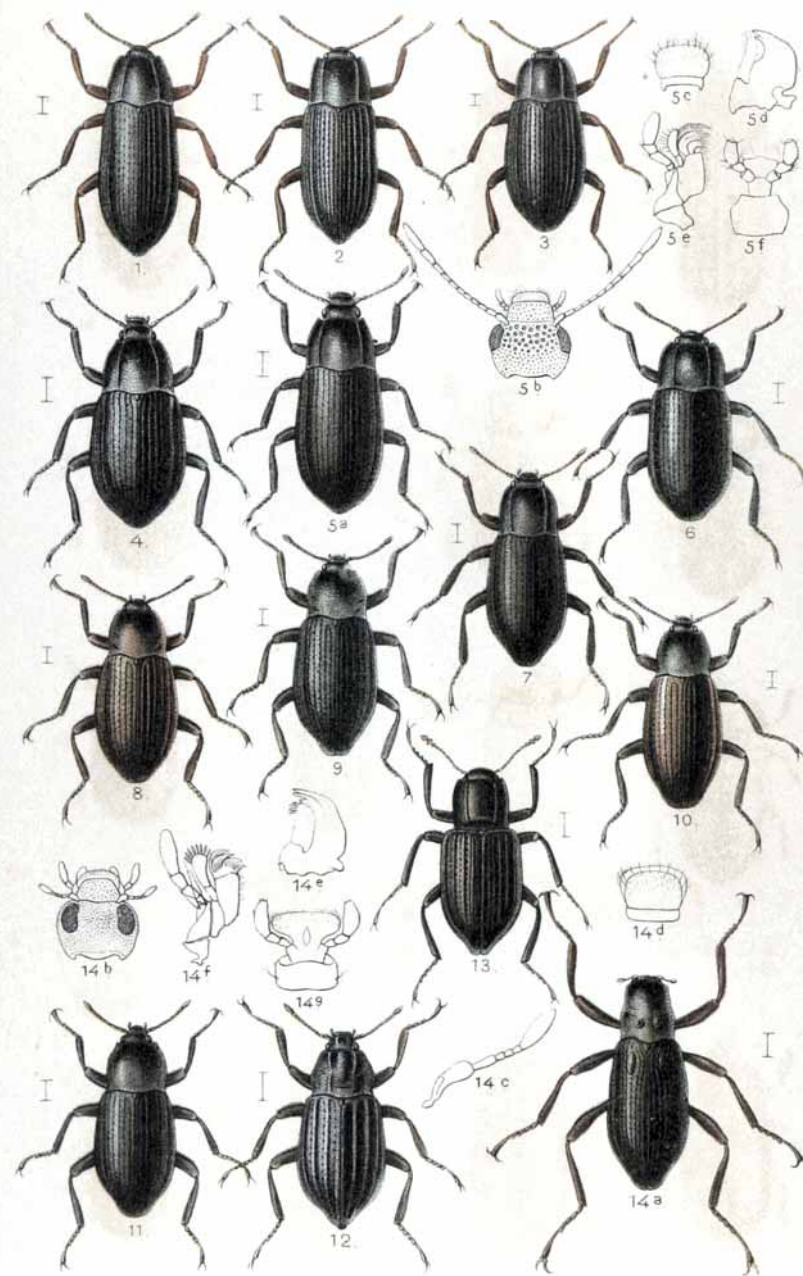


1. *Cytillus sericeus*. 2. *Byrrhus fasciatus*, 3. *pustulatus*, 4. *pilula*, 5. *luniger*, 6. *glabratus*, 7. *gigas*. 8. *Syncalypta setigera*, 9. *spinosa*. 10. *Nosodendron fasciculare*. 11. *Georysus crenulatus*, 12. *substriatus*, 13. *laescollis*. 14. *Potamophilus acuminatus*.



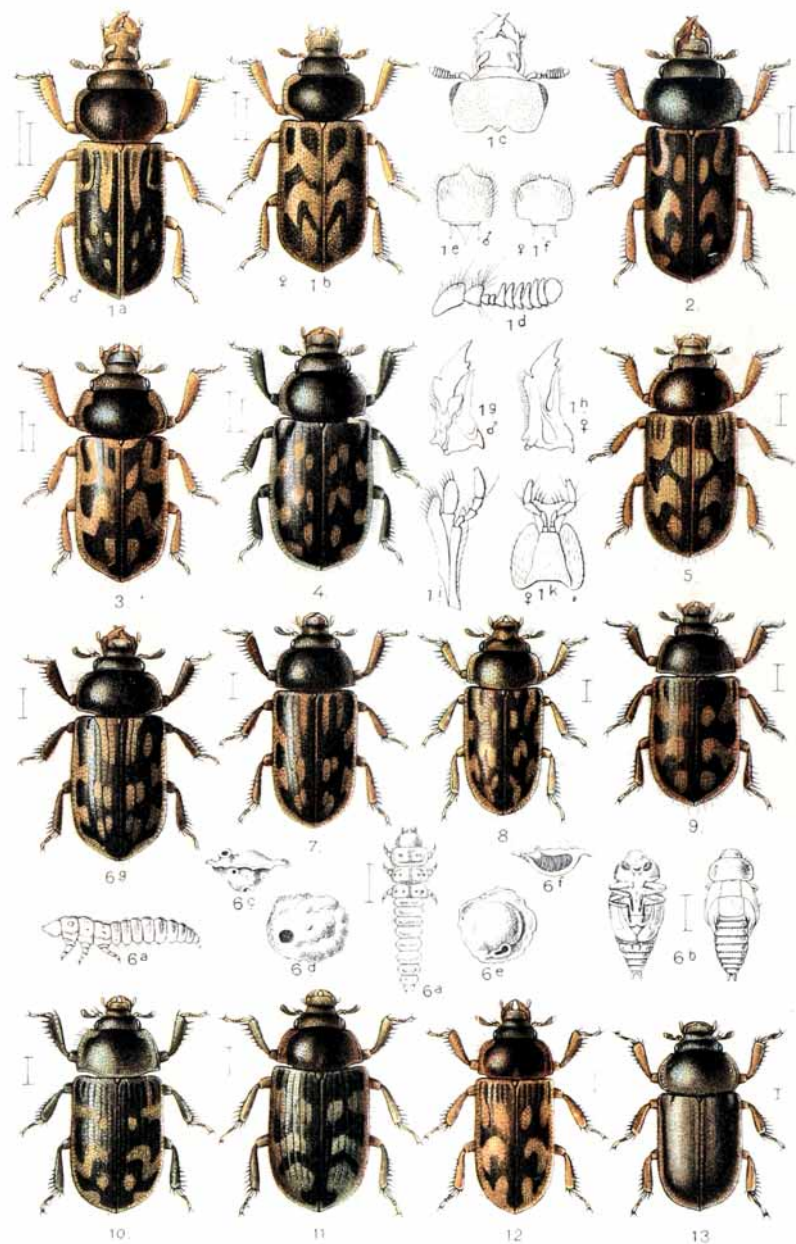


1. *Dryops viennensis*, 2. *lutulentus*, 3. *auriculatus*, 4. *luridus*, 5. *griseus*, 6. *Ernesti*, 7. *nitidulus*, 8. *Helichus substriatus*, 9. *Stenelmis canaliculata*, 10. *Limnius tuberculatus*.

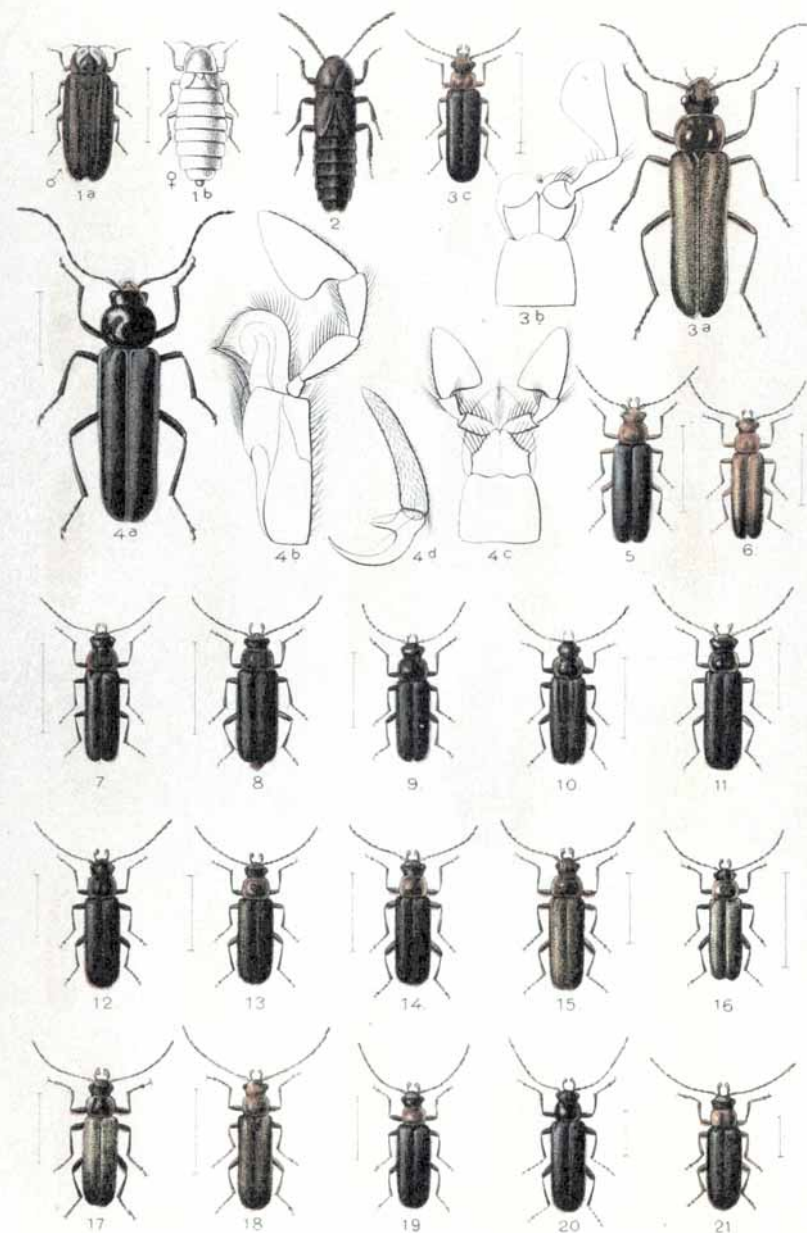


1. *Esolus angustatus*, 2. *parallelopipedus*, 3. *pygmaeus*, 4. *Latelmis* Germari, 5. *Volckmari*, 6. *opaca*, 7. *Mülleri*, 8. *Riolus cupreus*, 9. *subviolaceus*, 10. *nitens*, 11. *sodalis*, 12. *Helmis* Latreillei, 13. *Maugei* v. *aenea*, 14. *Macronychus quadrituberculatus*.



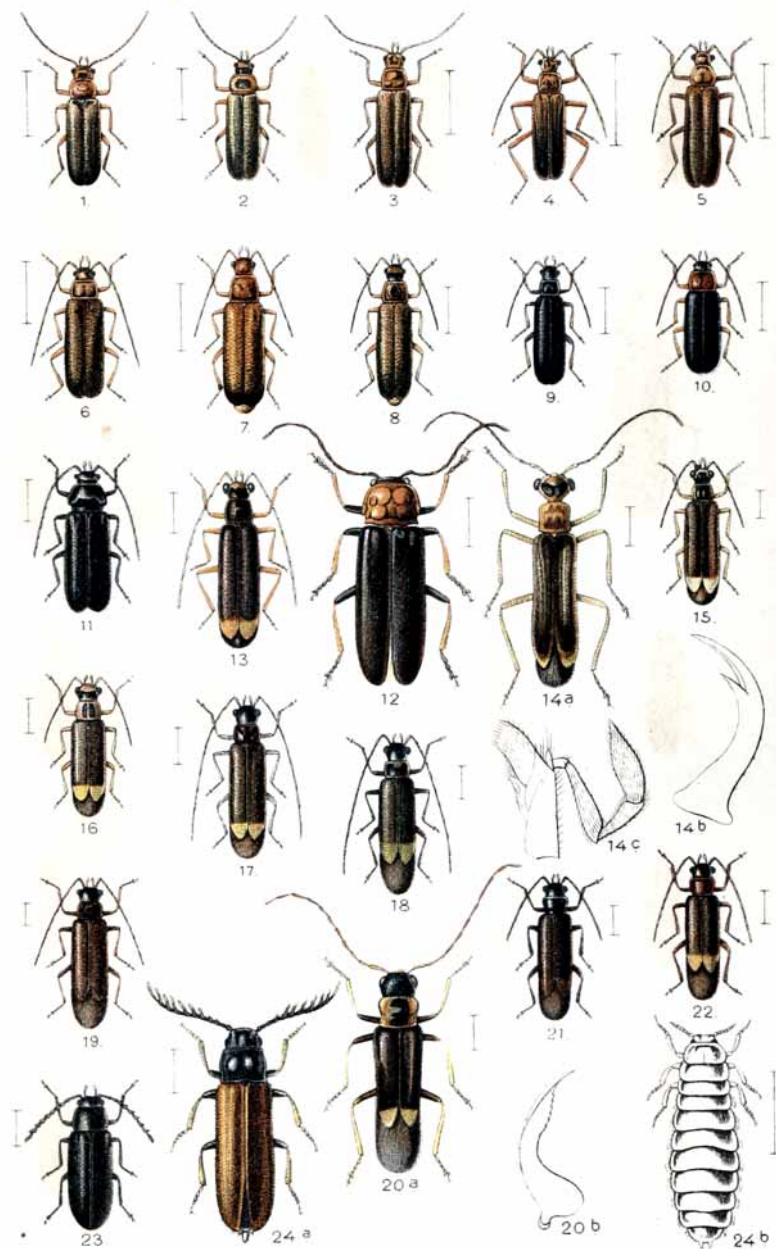


1. *Heterocerus parallelus*, 2. *fossor*, 3. *flexuosus*, 4. *obsoletus*, 5. *marginatus*, 6. *fenestratus*, 7. *fuscus*, 8. *pulchellus*, 9. *hispidulus*, 10. *intermedius*, 11. *crinitus*, 12. *sericans*, 13. *Micilus murinus*.

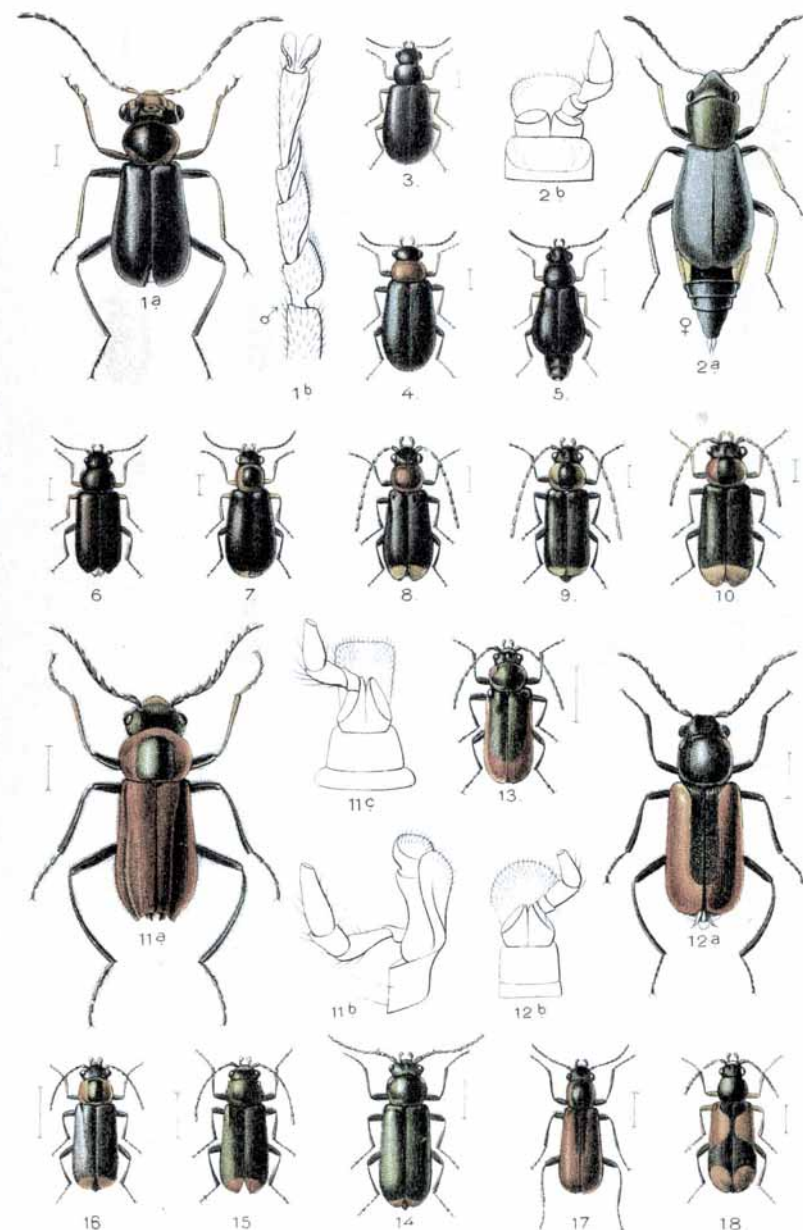


1. *Phausis splendidula*. 2. *Phosphaenus hemipterus*. 3. *Podabrus alpinus*, 3\* a. *annulatus*. 4. *Cantharis abdominalis*, 5. *violacea*, 6. *Erichsoni*, 7. *fusca*, 8. *rustica*, 9. *tristis*, 10. *obscura*, 11. *fibulata*, 12. *pulicaria*, 13. *nigricans*, 14. *pellucida*, 15. *livida*, 16. *assimilis*, 17. *sudetica*, 18. *rufa*, 19. *fulvicollis*, 20. *paludosa*, 21. *lateralis*.



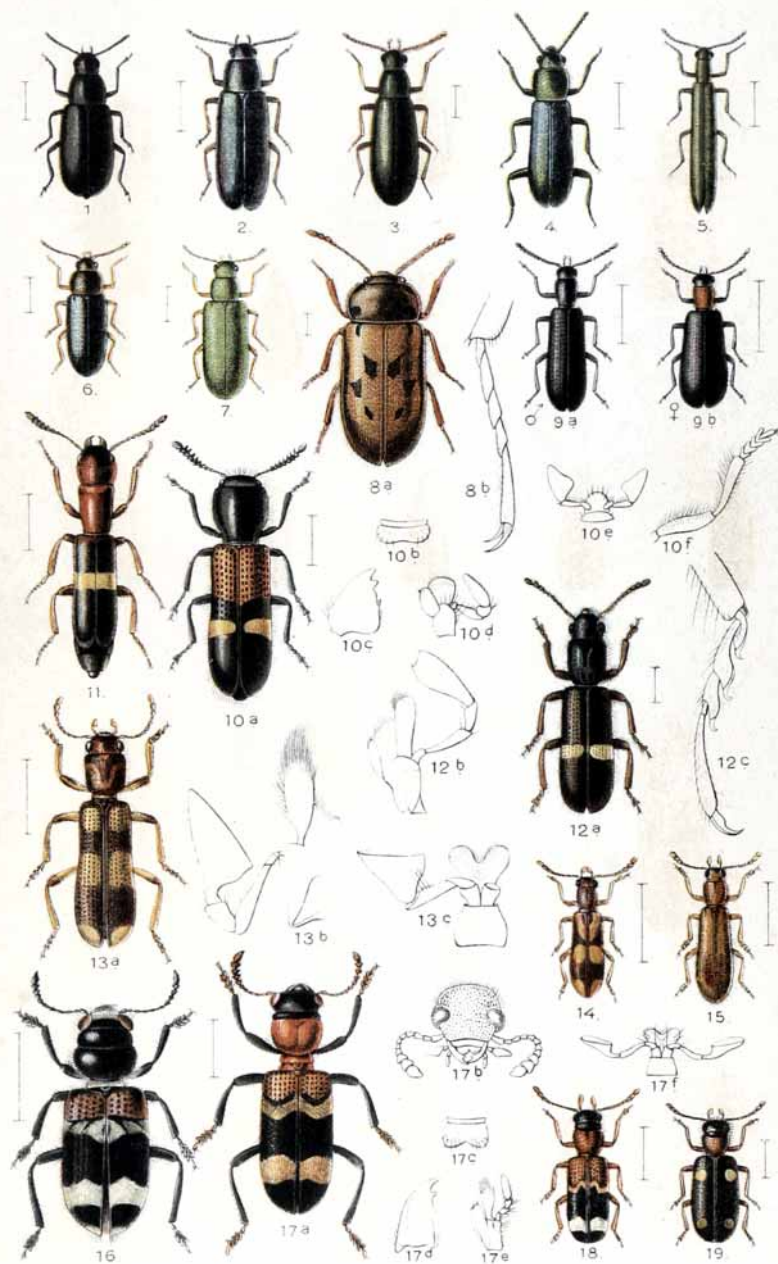


1. *Cantharis discoidea*, 2. *haemorrhoidalis*. 3. *Absidia pilosa*. 4. *Rhagonycha signata*, 5. *translucida*, 6. *nigriceps*, 7. *fulva*, 8. *testacea*, 9. *elongata*. 10. *Pygidia denticollis*. 11. *Silis nitidula*, 12. *ruficollis*. 13. *Malthinus biguttulus*, 14. *flaveolus*, 15. *fasciatus*, 16. *glabellus*. 17. *Malthodes marginatus*, 18. *guttifer*, 19. *brevicollis*, 20. *minimus*, 21. *maurus*, 22. *pellucidus*. 23. *Drilus concolor*, 24. *flavescens* ♂ ♀.

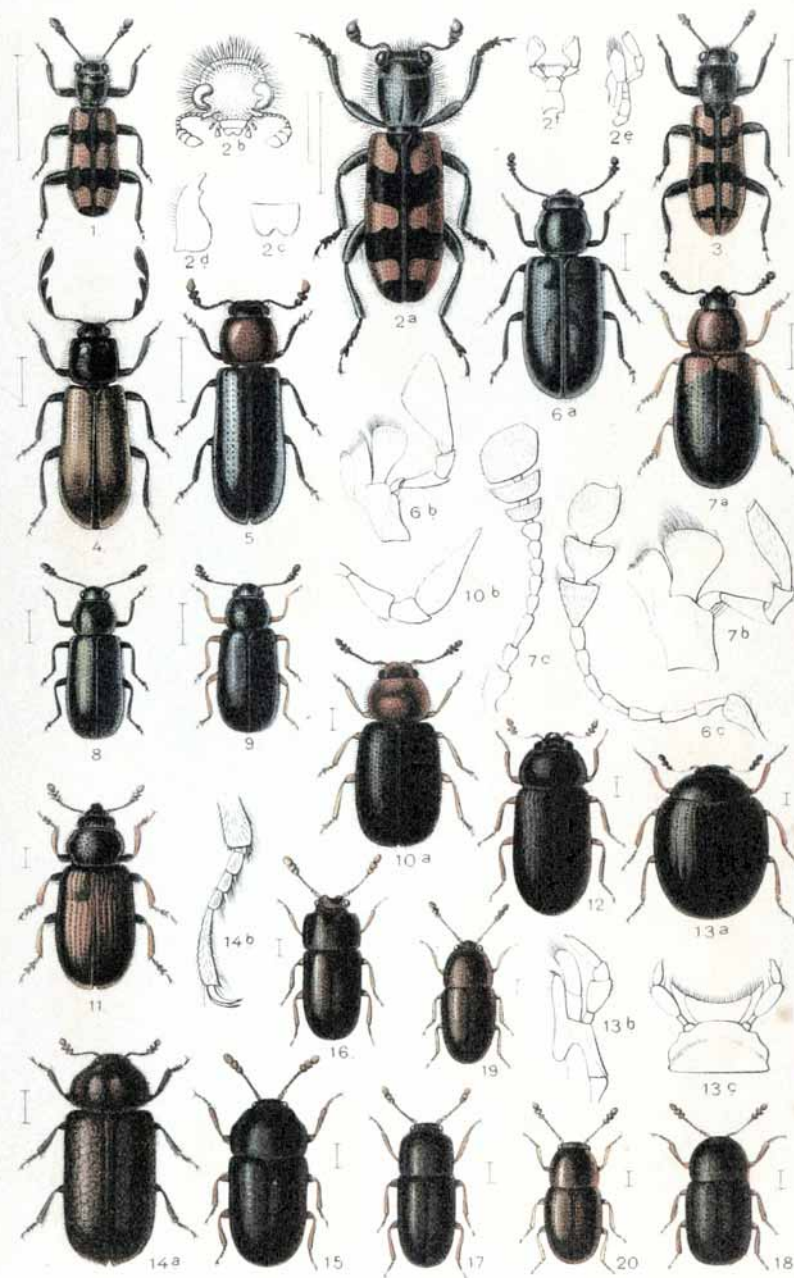


1. *Troglops albicans*. 2. *Charopus pallipes*. 3. *Hypebaeus flavipes*. 4. *Ebaeus thoracicus*, 5. *appendiculatus*, 6. *flavicornis*. 7. *Attalus analis*. 8. *Axinotarsus ruficollis*. 9. *pulcarius*, 10. *marginalis*. 11. *Malachius rufus*, 12. *rubidus*, 13. *aeneus* ♀, 14. *marginalis*, 15. *bipustulatus*, 16. *aeneus* ♂, 17. *Anthocomus rufus*, 18. *bipunctatus*.



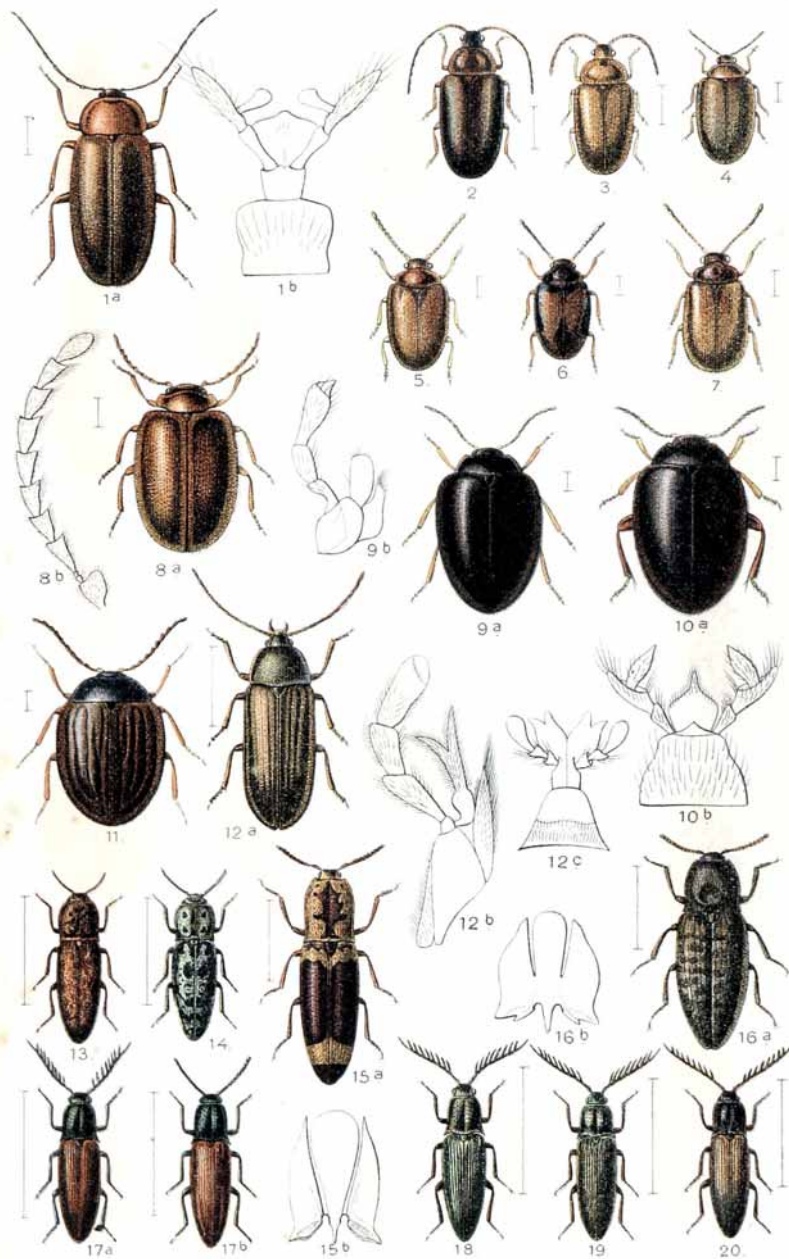


1. *Dasytes niger*, 2. *coeruleus*, 3. *plumbeus*. 4. *Psilothrix cyaneus*. 5. *Dolichosoma lineare*. 6. *Haplocnemus nigricornis*. 7. *Danacaea pallipes*. 8. *Phloeophilus Edwardsi*. 9. *Tillus elongatus*, 10. *unifasciatus*. 11. *Denops albofasciata*. 12. *Tarsostenus univittatus*. 13. *Opilo domesticus*, 14. *mollis*, 15. *pallidus*. 16. *Clerus mutillarius*. 17. *Thanasimus formicarius*, 18. *rufipes*. 19. *Allonyx quadrimaculatus*.

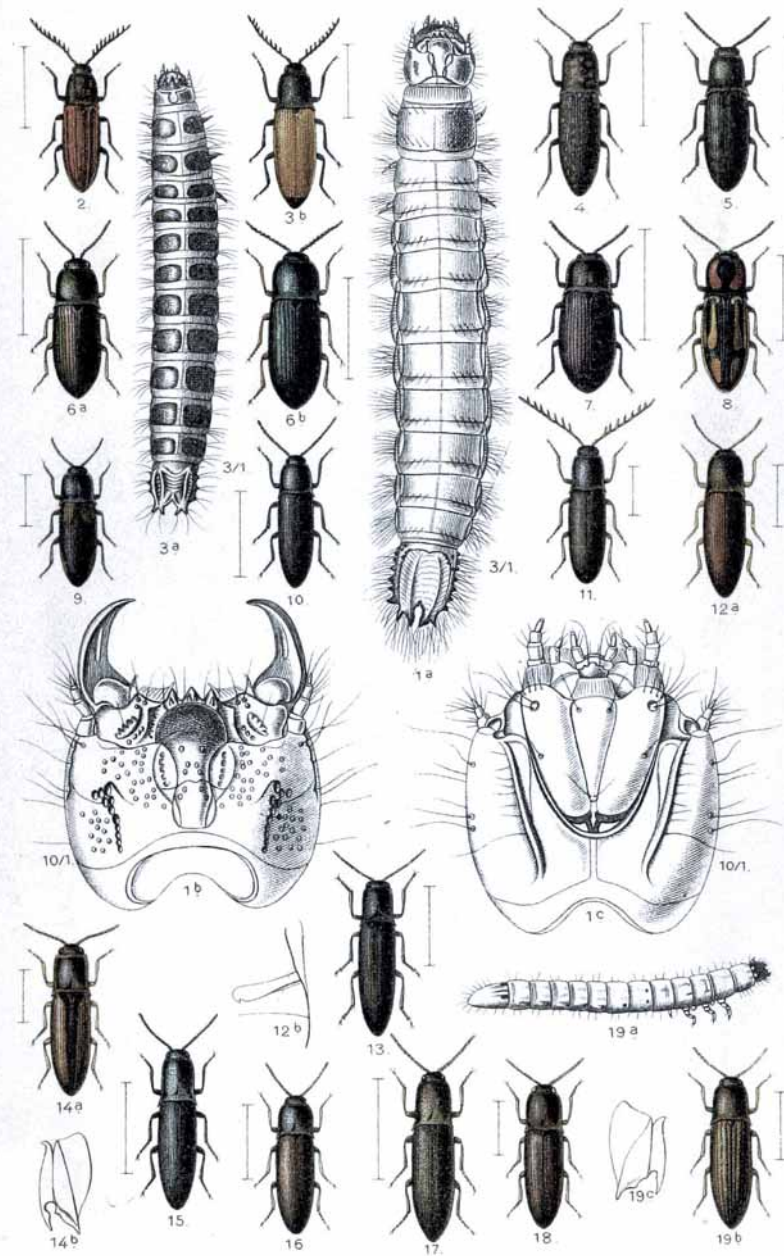


1. *Trichodes aparius*, 2. *favarius*, 3. *alvearius*. 4. *Enoplium serraticorne*. 5. *Orthopleura sanguinicollis*. 6. *Corynetes coeruleus*. 7. *Necrobia ruficollis*. 8. *violacea*, 9. *rufipes*. 10. *Opetiopalpus scutellaris*. 11. *Laricobius Erichsoni*. 12. *Sphindus dubius*. 13. *Aspidiphorus Lareyniei*. 14. *Hendecatomois reticulatus*. 15. *Cis boleti*. 16. *bidentatus*, 17. *alni*. 18. *Rhopalodontus perforatus*. 19. *Ennearthron cornutum*. 20. *Octotemnus glabriculus*.



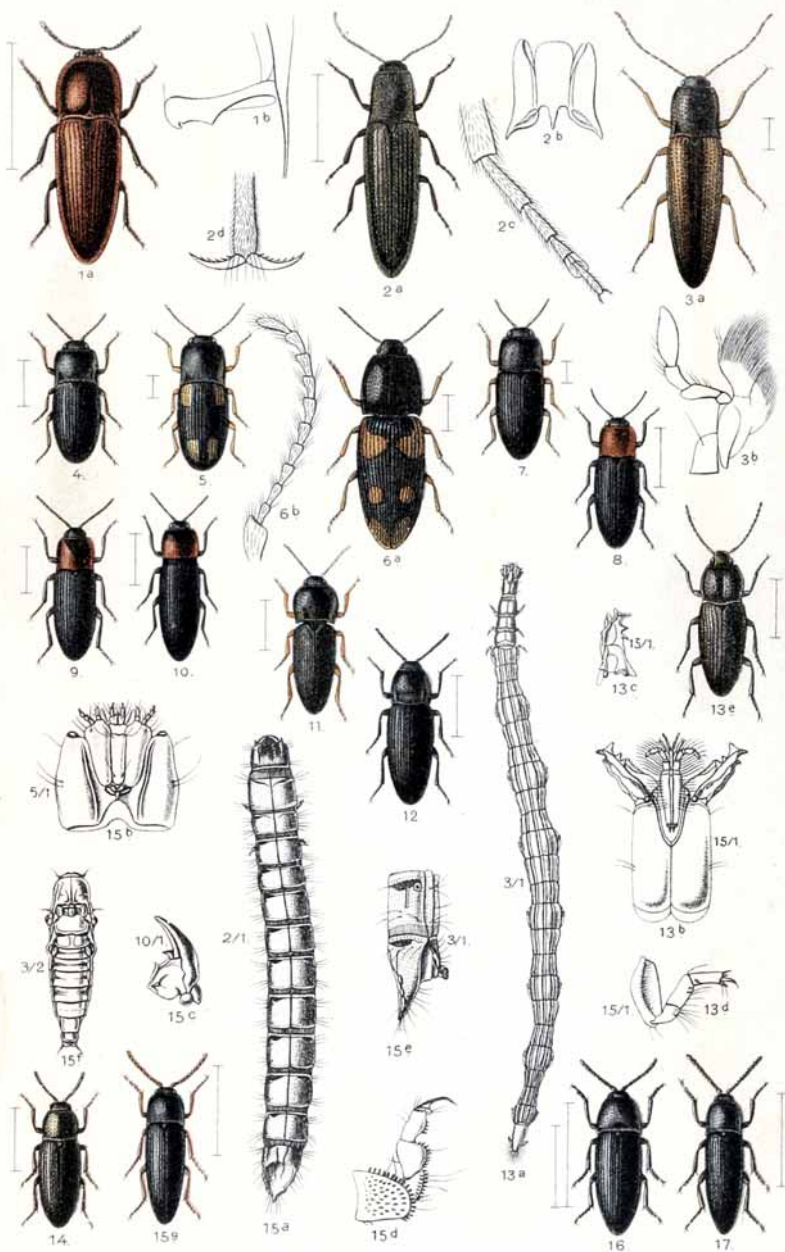


1. *Helodes minuta*, 2. *marginata*. 3. *Microcara testacea*. 4. *Cyphon variabilis*, 5. *ochraceus*, 6. *padi*, 7. *coarctatus*. 8. *Prionocyphon serricornis*. 9. *Hydrocyphon deflexicollis*. 10. *Scirtes hemisphaericus*. 11. *Eubria palustris*. 12. *Dascillus cervinus*. 13. *Adelocera lepidoptera*, 14. *fasciata*, 15. *quercea*. 16. *Brachylacon murinus*. 17. *Corymbites virens* ♂, 17<sup>b</sup>. a. *signatus* ♀, 18. *pectinicornis*, 19. *Heyeri*, 20. *cupreus*.

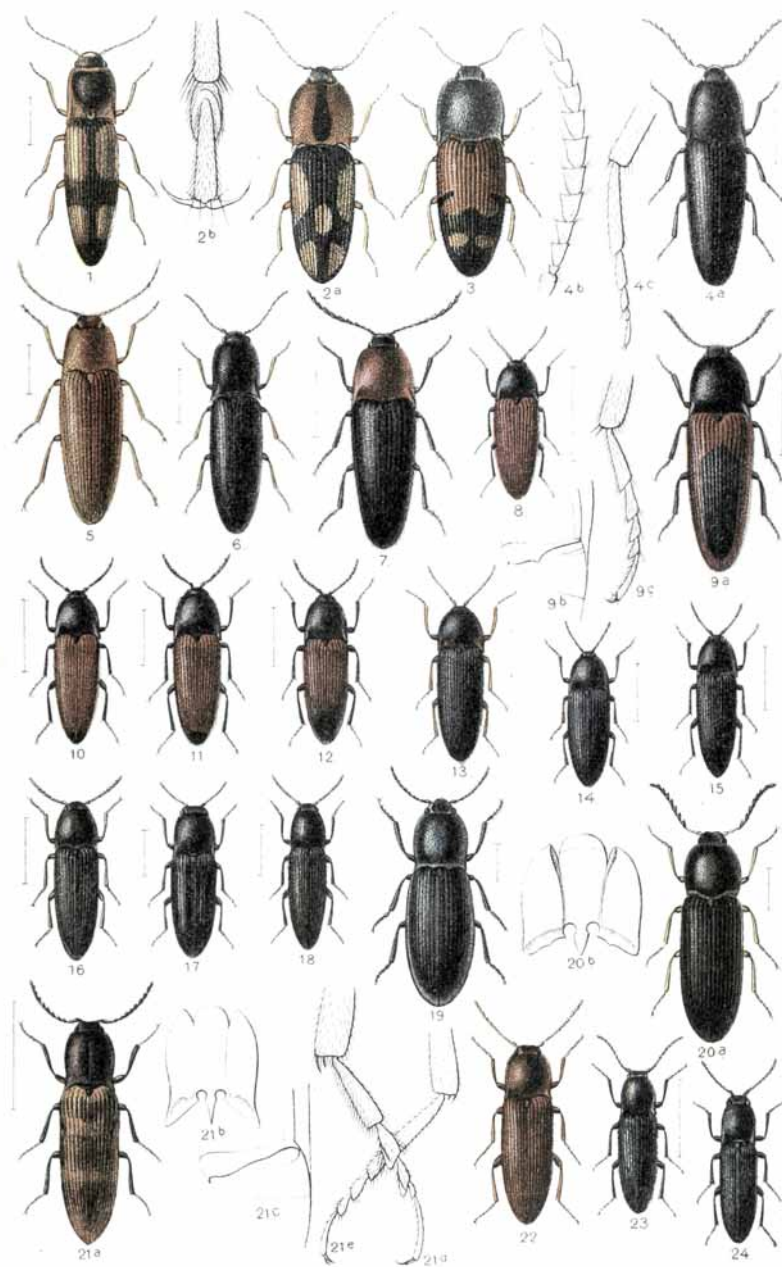


1. *Brachylacon murinus* Larve. 2. *Corymbites purpureus*, 3. *castaneus*, 4. *tessellatus*. 5. *Selatosomus impressus*, 6. a. *coeruleus*, 7. *latus*, 8. *cruciatus*, 9. *bipustulatus*, 10. *affinis*. 11. *Orithales serraticornis*. 12. *Sericus brunneus*, 13. *subaeneus*. 14. *Dolopius marginatus*. 15. *Agriotes aterrimus*, 16. *ustulatus*, 17. *pilosus*, 18. *spu-tator*, 19. *lineatus*.



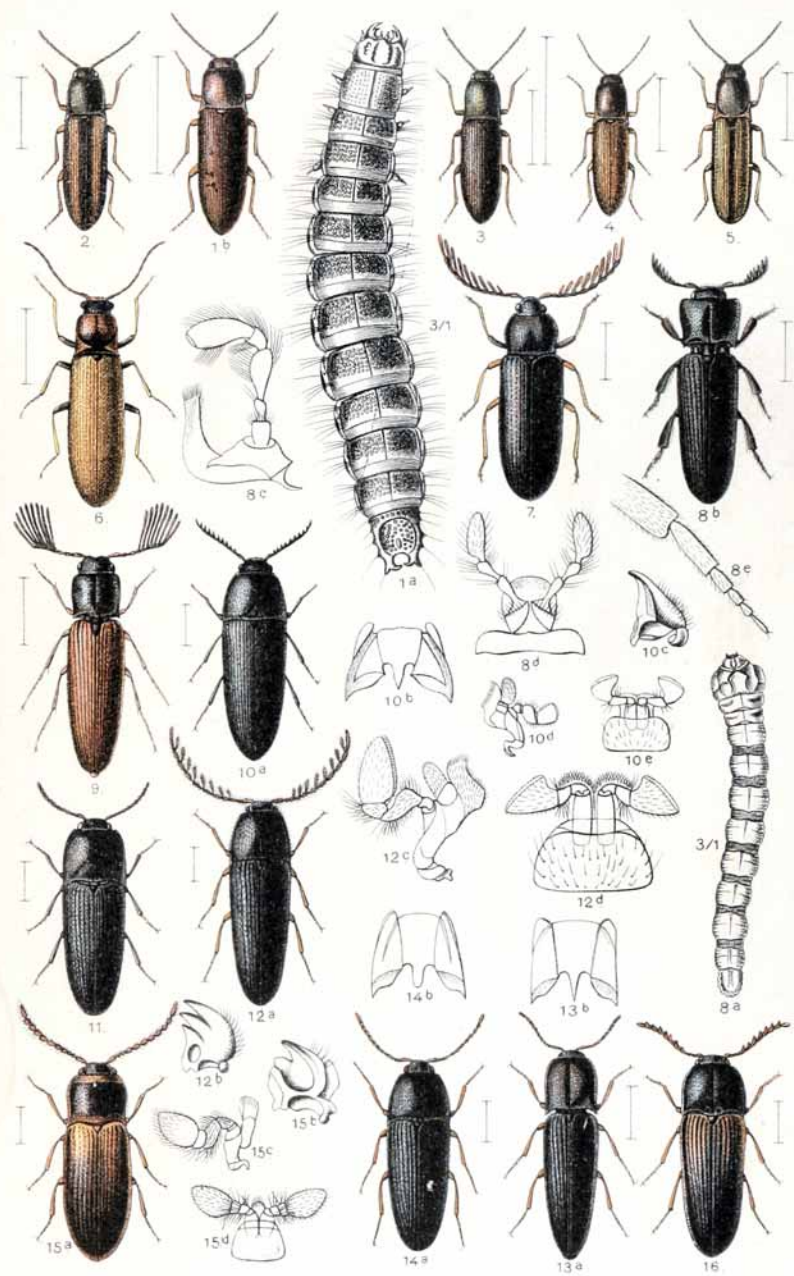


1. *Ludius ferrugineus*. 2. *Synaptus filiformis*. 3. *Adrastus limbatus*. 4. *Cryptohypnus riparius*. 5. *Hypnoideus 4pustulatus*. 6. *pulchellus*. 7. *dermestoides*. 8. *Cardiophorus gramineus*. 9. *discicollis*. 10. *ruficollis*. 11. *Erichsoni*. 12. *nigerrimus*. 13. *asellus*. 14. *cinereus*. 15. *Melanotus rufipes*. 16. *punctolineatus*. 17. *brunnipes*.

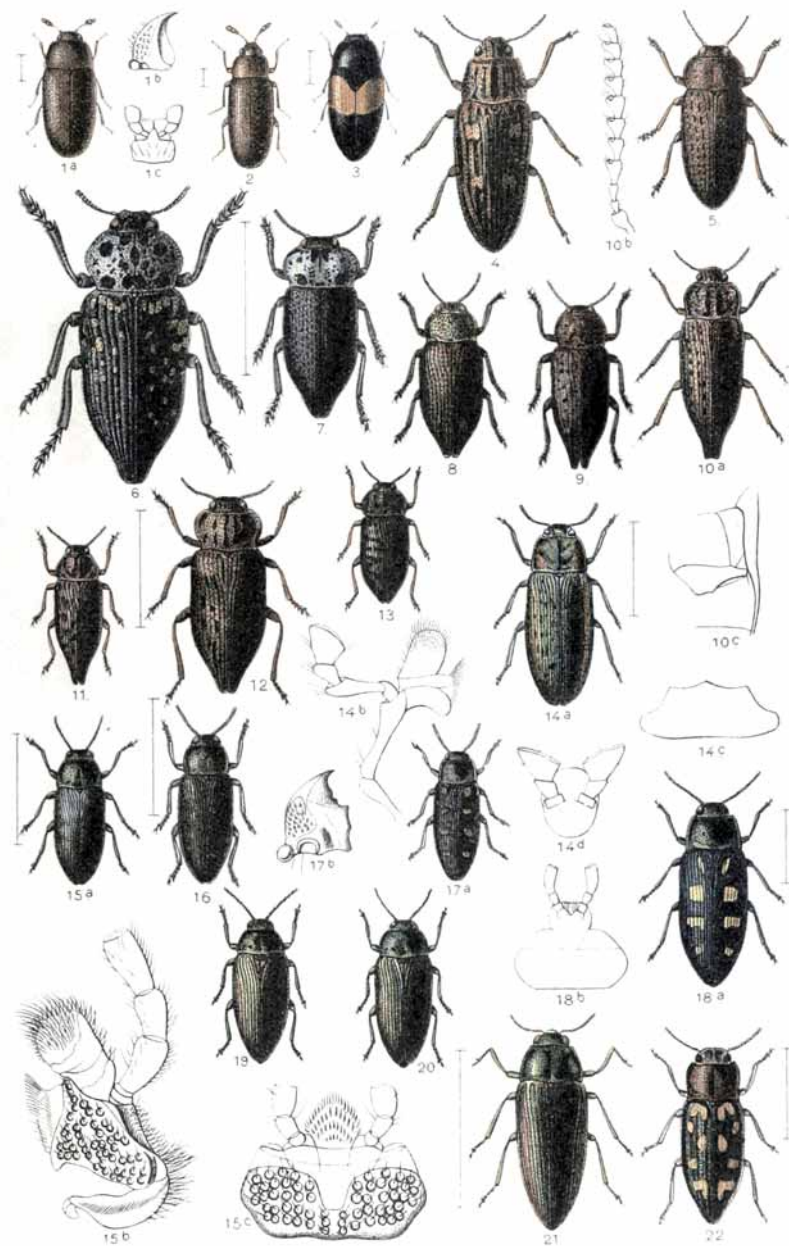


1. *Betarmon ferrugineus*. 2. *Heteroderes crucifer*. 3. *Drasterius bimaculatus*. 4. *Anchastes acuticorais*. 5. *Porthmidius austriacus*. 6. *Procræus tibialis*. 7. *Ischnodes sanguinellus*. 8. *Elater cinnabarinus*. 9. *sanguinolentus*. 10. *præustus*. 11. *elongatus*. 12. *balteatus*. 13. *erythronus*. 14. *nigrinus*. 15. *nigerrimus*. 16. *Limonius pilosus*. 17. *minutus*. 18. *parvulus*. 19. *Pheletes aeneoniger*. 20. *lythrodes*. 21. *Harminius undulatus*. 22. *Athous rufus*. 23. *niger*. 24. *mutilatus*.



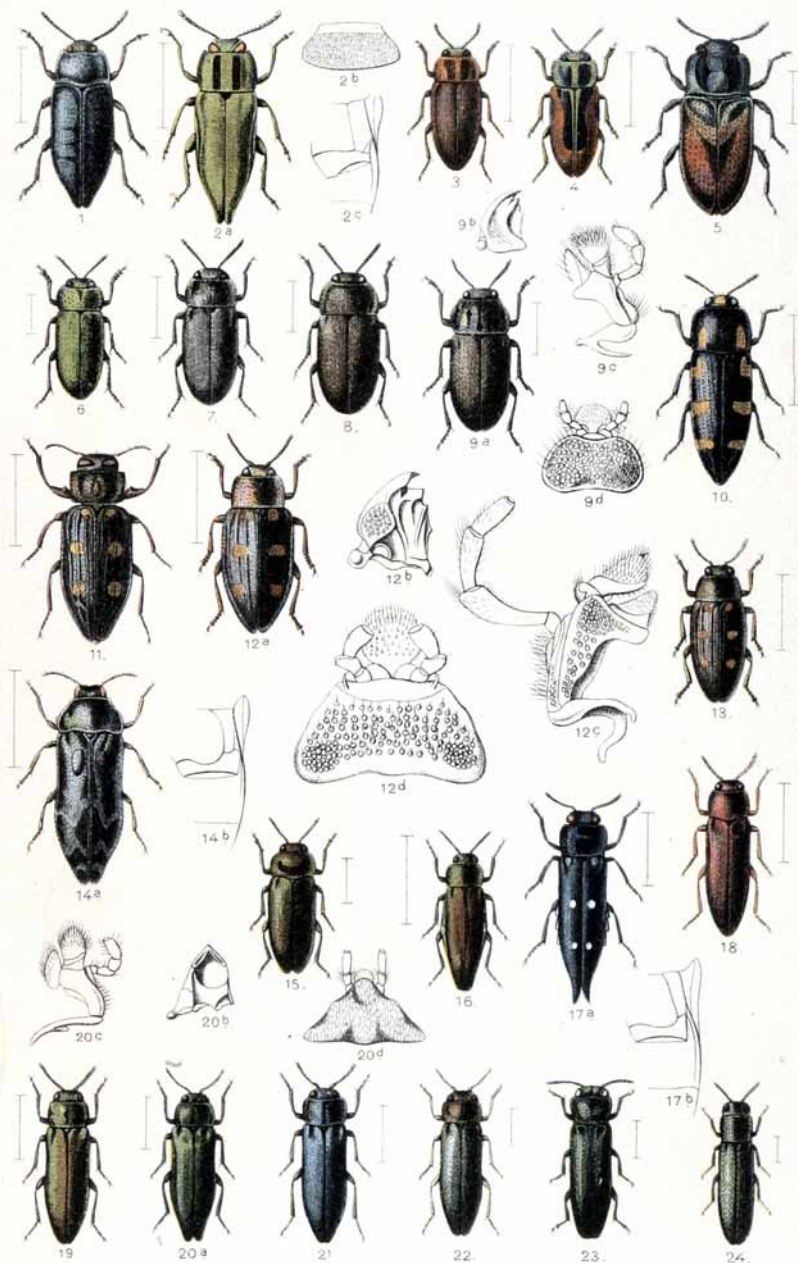


1. *Athous villosus*, 2. *vittatus*, 3. *haemorrhoidalis*, 4. *subfuscus*, 5. *longicollis*, 6. *Denticollis linearis*, 7. *Cerophytum elateroides*, 8. *Melasis buprestoides*, 9. *Isorhipis melasoides*, 10. *Eucnemis capucina*, 11. *Dromaeolus barnabita*, 12. *Dirrhagus pygmaeus*, 13. *Nematodes filum*, 14. *Hypocoelus procerulus*, 15. *Xylobius corticalis*, 16. *Otho spondiloides*.

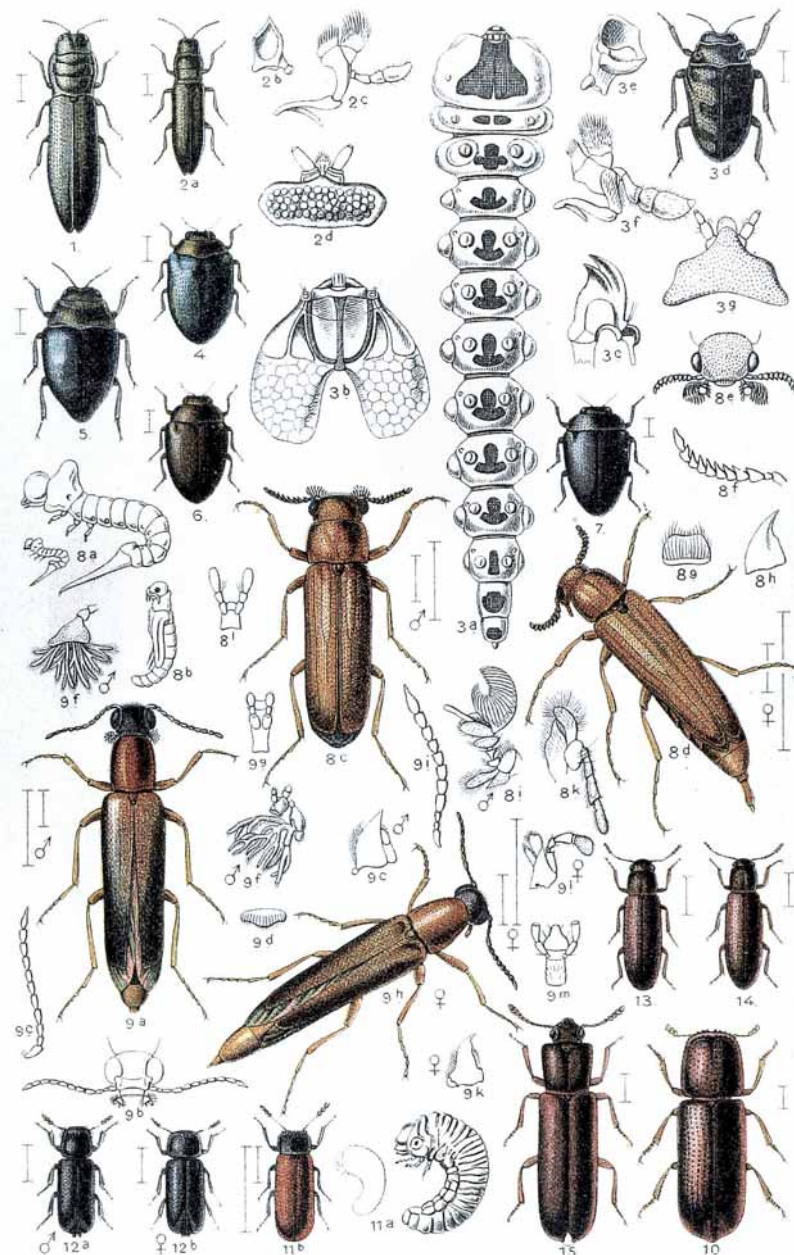


1. *Trixagus dermestoides*, 2. *elateroides*, 3. *Drapetes biguttatus*, 4. *Chalcophora Mariana*, 5. *Perotis lugubris*, 6. *Capnodis cariosa*, 7. *tenebrionis*, 8. *Dicerca aenea*, 9. *berolinensis*, 10. *alni*, 11. *acuminata*, 12. *moesta*, 13. *Poecilonota variolosa*, 14. *rutilans*, 15. *Buprestis rustica*, 16. *haemorrhoidalis*, 17. *maculata*, 18. *sguttata*, 19. *Eurythyrea austriaca*, 20. *scutellaris*, 21. *marginata*, 22. *Melanophila picta*.



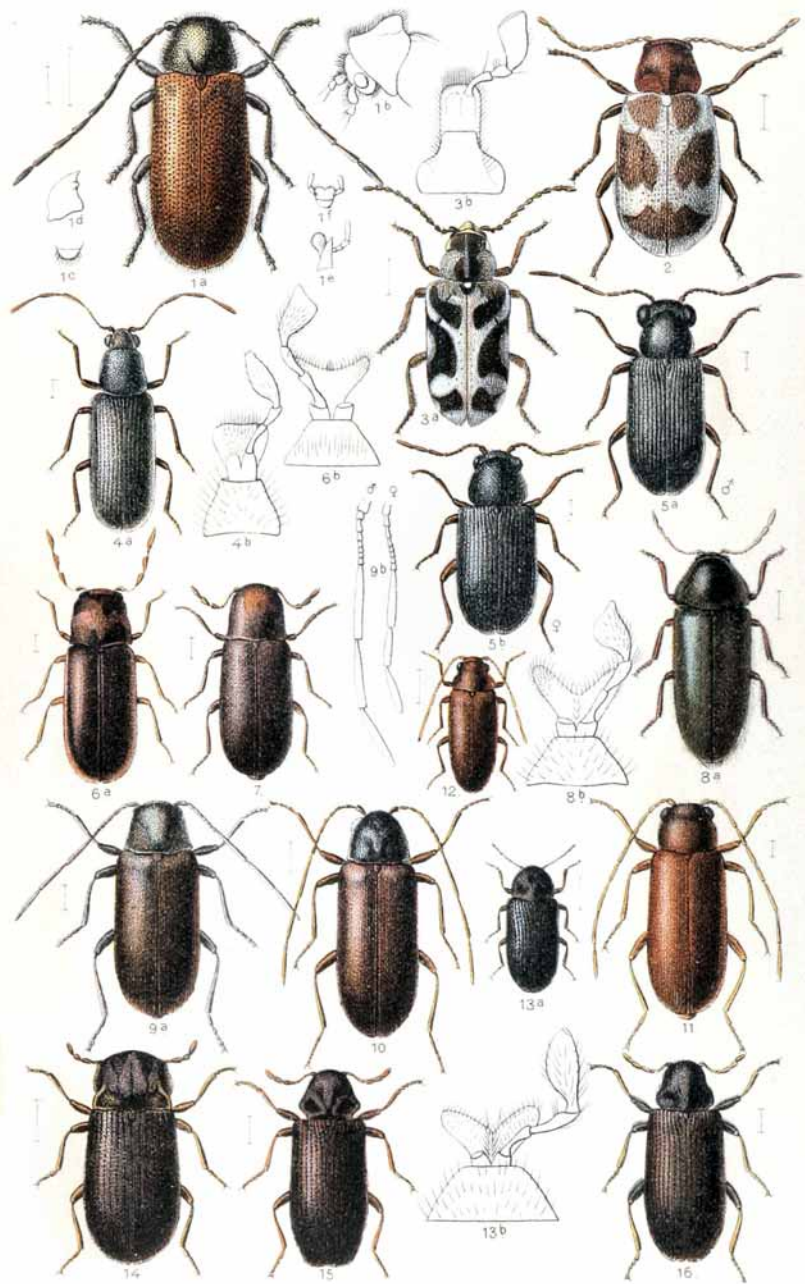


1. *Phaenops cyanea*. 2. *Anthaxia hungarica* ♂. 3. *manca*. 4. *candens*. 5. *salicis*, 6. *nitidula*. 7. *morio*. 8. *sepulchralis*. 9. *4punctata*. 10. *Ptosima* 11. *maculata*. 11. *Chrysothris chryso stigma*, 12. *affinis*, 13. *Solieri*. 14. *Coraebus undatus*, 15. *lampsanae*. 16. *Agrilus biguttatus*, 17. *Guerini*, 18. *sinuatus*, 19. *subauratus*, 20. *viridis*, 21. *coeruleus*, 22. *Roberti*, 23. *angustulus*. 24. *Cylindromorphus filum*.

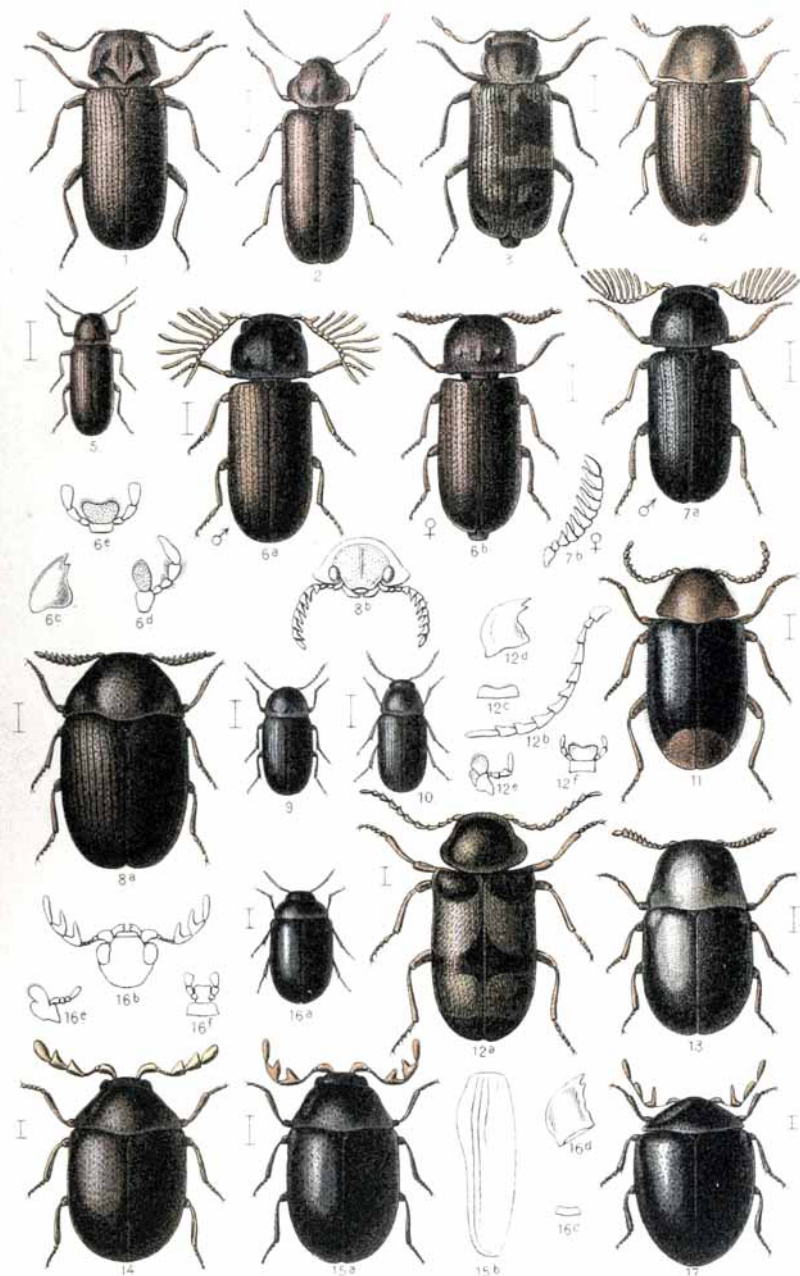


1. *Aphanisticus emarginatus*, 2. *pusillus*. 3. *Trachys minuta*, 4. *pygmaea*, 5. *troglodytes*, 6. *pumila*. 7. *Habroloma nana*. 8. *Hylecoetus dermestoides*. 9. *Lymexylon navale*. 10. *Rhizopertha dominica*. 11. *Bostrychus capucinus*. 12. *Xylonites retutus*. 13. *Lyctus linearis*, 14. *pubescens*. 15. *Trogoxylon impressum*.



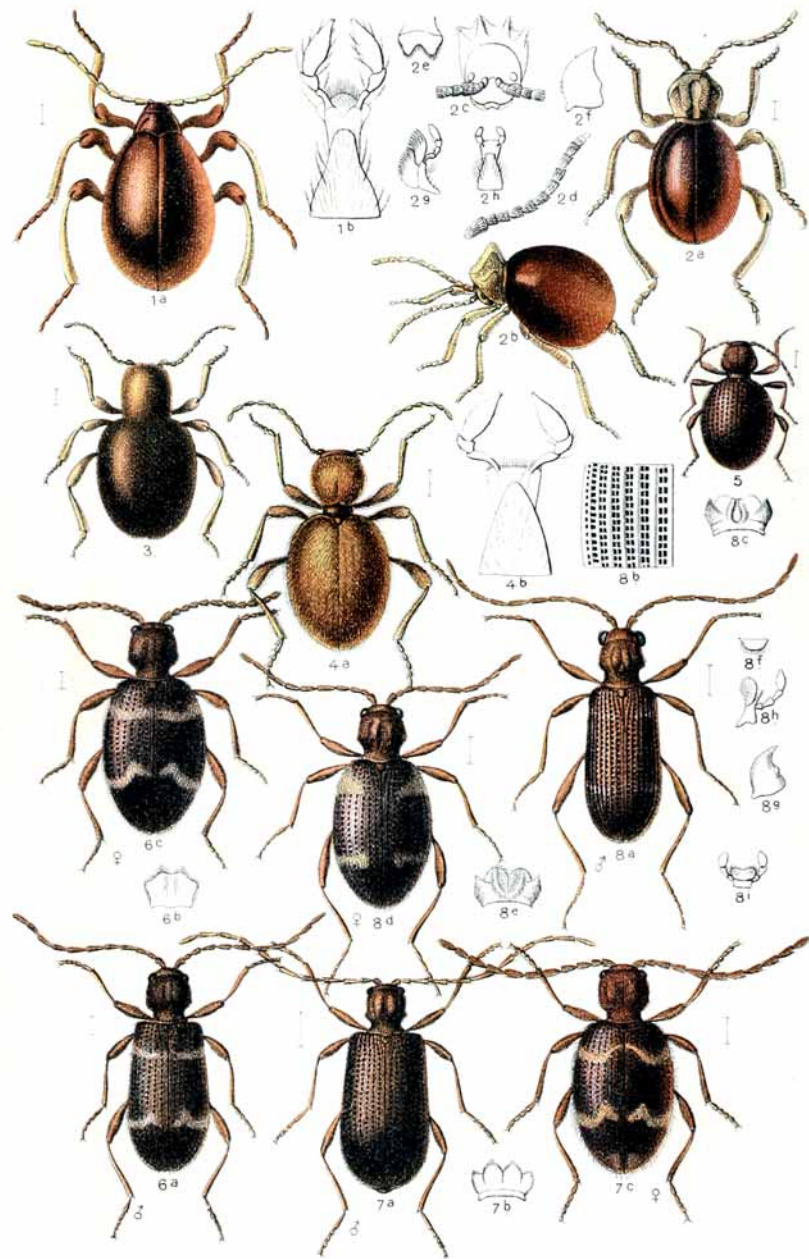


1. *Hedobia pubescens*, 2. *regalis*, 3. *imperialis*, 4. *Dryophilus anobioides*, 5. *pusillus*, 6. *Gastrallus immarginatus*, 7. *laevigatus*, 8. *Xestobium plumbeum*, 9. *Ernobius nigrinus*, 10. *longicornis*, 11. *abietinus*, 12. *mollis*, 13. *Anobium pertinax*, 14. *denticolle*, 15. *nitidum*, 16. *fulvicorne*.

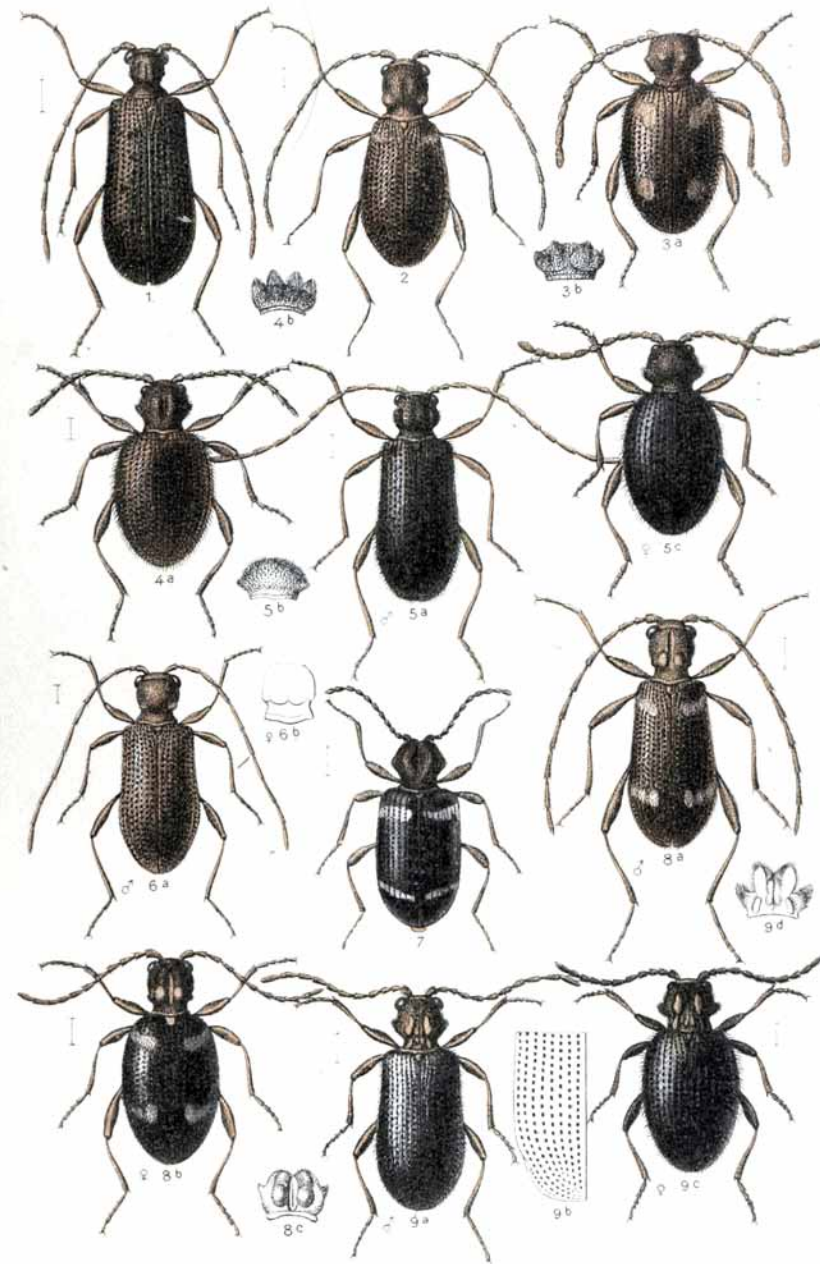


1. *Anobium emarginatum*, 2. *Oligomerus brunneus*, 3. *Nicobium castaneum*, 4. *Sitodrepa panicea*, 5. *Trypophthys carpini*, 6. *Ptilinus pectinicornis*, 7. *fuscus*, 8. *Xyletinus laticollis*, 9. *ater*, 10. *pectinatus*, 11. *Ochina Latreillei*, 12. *ptinoides*, 13. *Mesocoelopus niger*, 14. *Dorcatoma flavicornis*, 15. *chrysomelina*, 16. *dresdensis*, 17. *Caenocara bovistae*.



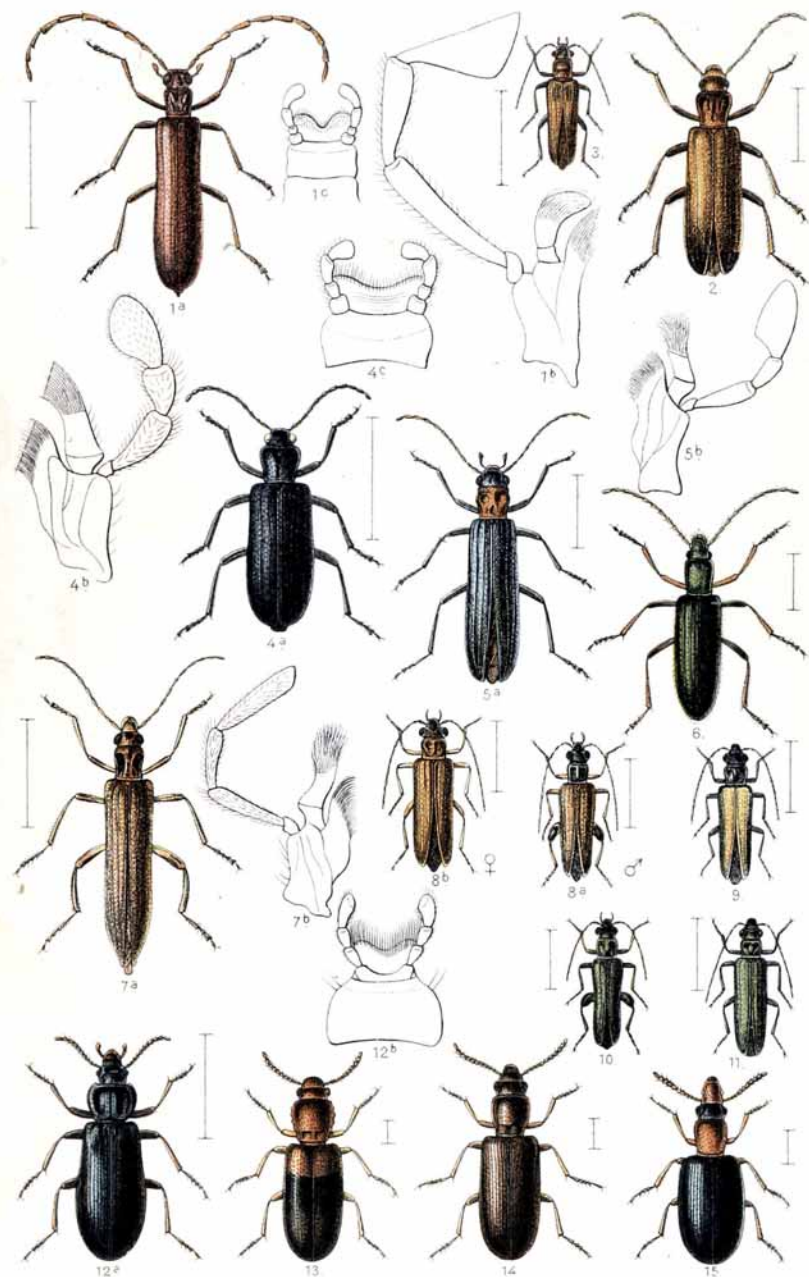


1. *Gibbium psylloides*. 2. *Meziium affine*. 3. *Sphaericus gibbioides*. 4. *Niptus hololeucus*, 5. *unicolor*. 6. *Ptinus lichenum*, 7. *rufipes*, 8. *fur*.

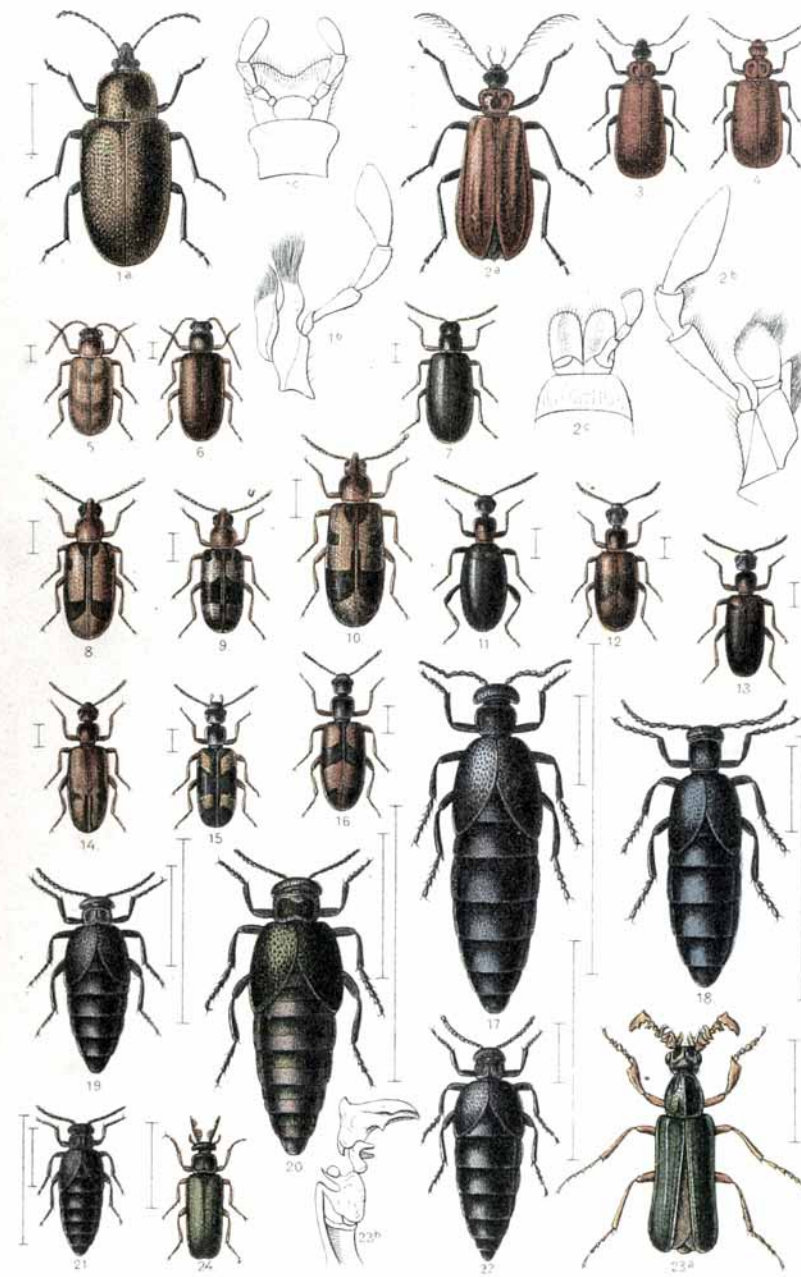


1. *Ptinus coarcticollis* ♂, 2. *pusillus* ♂, 3. *bicinctus* ♀, 4. *brunneus*, a. *testaceus* ♀, 5. *pilosus* ♂ ♀, 6. *dubius* ♂, 7. *variegatus*, 8. *raptor* ♂ ♀, 9. *nitidus* ♀.



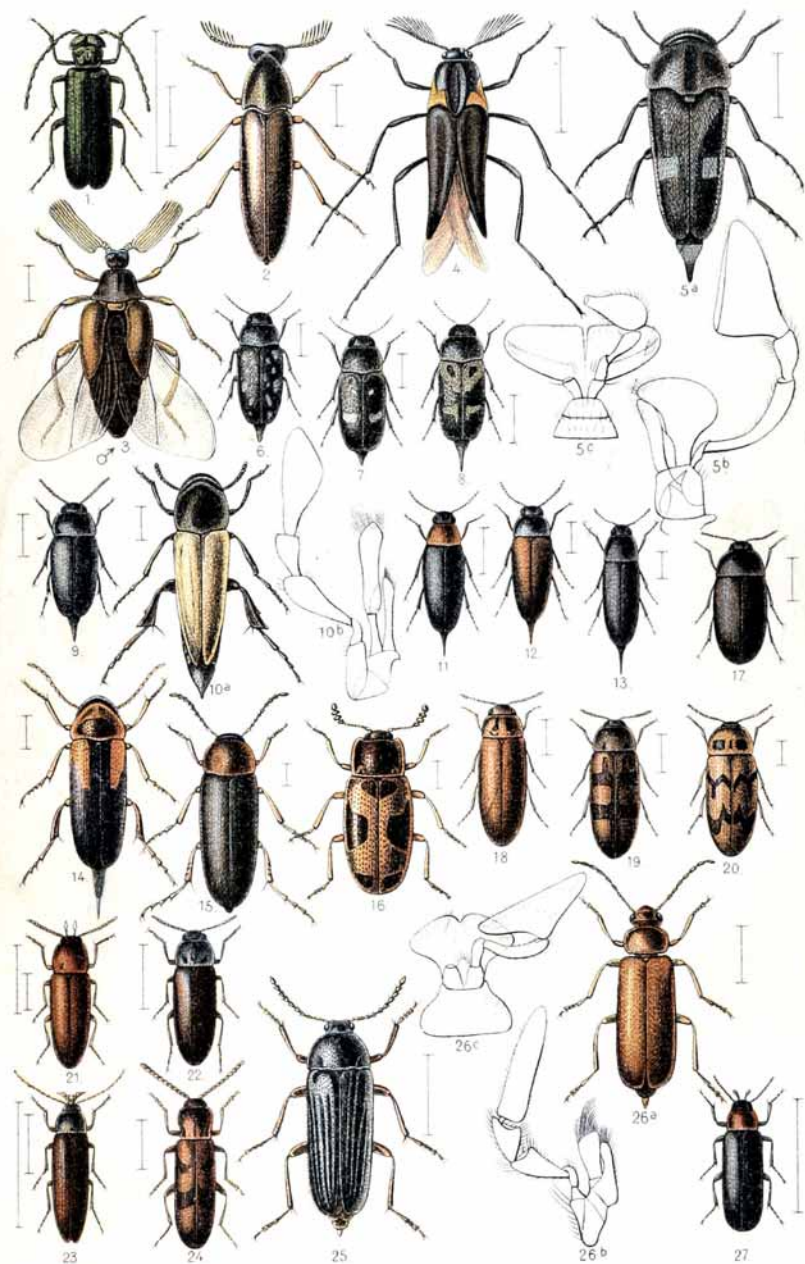


1. *Calopus serraticornis*. 2. *Nacerda melanura*. 3. *Anoncodes adusta*. 4. *Dytillus laevis*. 5. *Ischnomera sanguinicollis*. 6. *Chrysanthia viridis*. 7. *Oncomera femorata*. 8. *Oedemera podagrariae*, 9. *subulata*, 10. *flavipes*, 11. *virescens*. 12. *Pytho depressus*. 13. *Lissodema 4pustulatum*. 14. *Sphaeriestes castaneus*. 15. *Rhinosimus ruficollis*.

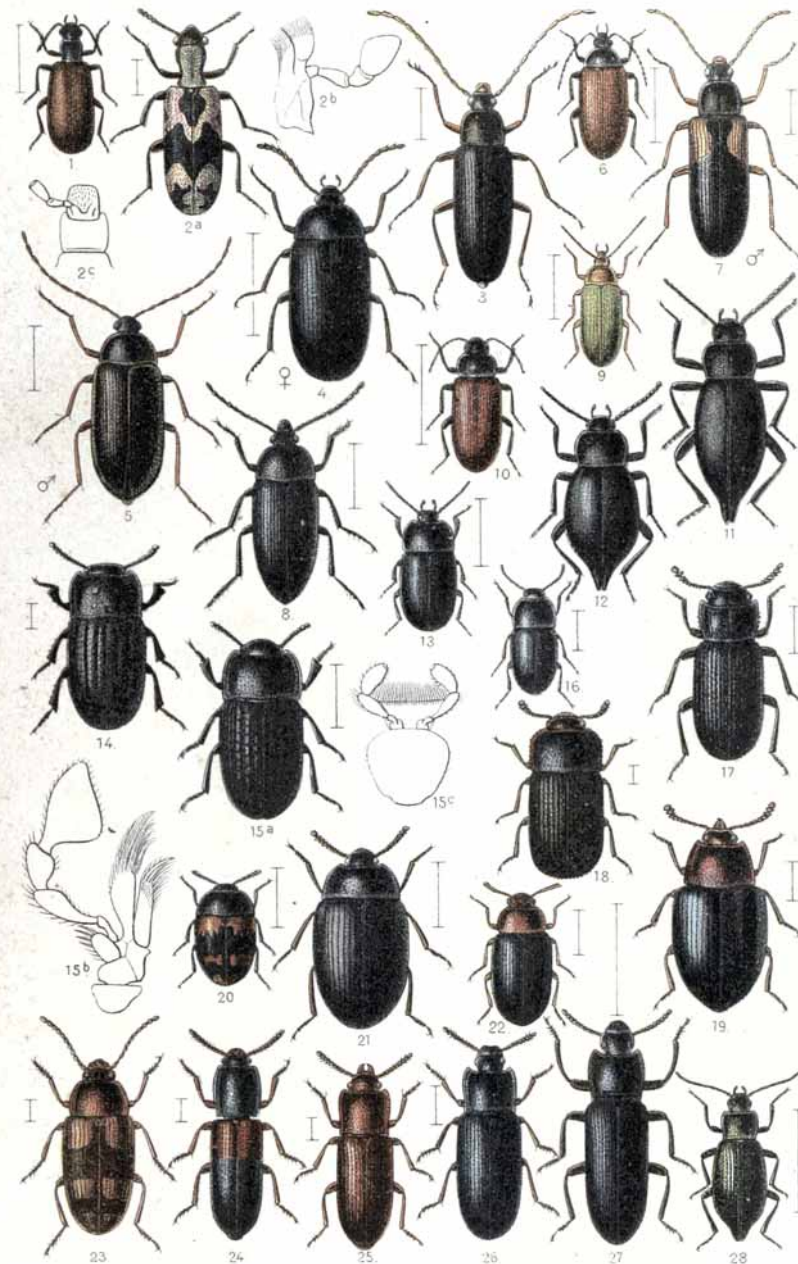


1. *Mycterus curculionides*. 2. *Pyrochroa pectinicornis*, 3. *coccinea*, 4. *serraticornis*, 5. *Hylophilus populneus*, 6. *pygmaeus*, 7. *nigrinus*. 8. *Notoxus monoceros*, 9. *cornutus*, 10. *brachycerus*. 11. *Formicopus pedestris*. 12. *Anthicus humilis*, 13. *floralis*, 14. *gracilis*, 15. *quadriguttatus*, 16. *antherinus*. 17. *Meloë proscarabaeus*, 18. *violaceus*, 19. *decorus*. 20. *variegatus*, 21. *rugosus*, 22. *scabriusculus*. 23. *Cerocoma Mühlfeldi* ♂, 24. *Schäfferi* ♂





1. *Lytta vesicatoria*. 2. *Pelecotoma fennica*. 3. *Rhipidius pectinicornis* ♂. 4. *Metoecus paradoxus*. 5. *Tomoxia biguttata*. 6. *Mordella maculosa*. 7. *Mycetochara flavipes*. 8. *fasciata*. 9. *aculeata*. 10. *Stenalia testacea*. 11. *Mordellistena abdominalis*. 12. *humeralis*. 13. *parvula*. 14. *lateralis*. 15. *Anaspis ruficollis*. 16. *Tetratoma ancora*. 17. *Eustrophus dermestoides*. 18. *Hallomenus binotatus*. 19. *Orchesia fasciata*. 20. *Abdera flexuosa*. 21. *Phloeotrypa Vaudoueri*. 22. *Xylita buprestoides*. 23. *Seropalpus barbatus*. 24. *Hypulus bifasciatus*. 25. *Melandrya flavicornis*. 26. *Conopalpus testaceus*. 27. *Phryganophilus ruficollis*.



1. *Lagria hirta*. 2. *Agnathus decoratus*. 3. *Allecula morio*. 4. *Prionychus ater*. 5. *Hymenalia rufipes*. 6. *Gonodera ceramboides*. 7. *Mycetochara flavipes*. 8. *Podonta nigrita*. 9. *Cteniopus sulphureus*. 10. *Omophlus lepturoides*. 11. *Blaps mortisaga*. 12. *mucronata*. 13. *Pedinus femoralis*. 14. *Melanimon tibiale*. 15. *Opatrum sabulosum*. 16. *Crypticus quisquilius*. 17. *Boletophagus reticulatus*. 18. *Eledona agaricola*. 19. *Scaphidema metallicum*. 20. *Diaperis boleti*. 21. *Platydema violacea*. 22. *Arhenoplitia haemorrhoidalis*. 23. *Alphitophagus bifasciatus*. 24. *Hypophloeus fasciatus*. 25. *Caenocorse depressa*. 26. *Tribolium madens*. 27. *Tenebrio opacus*. 28. *Helops lanipes*.