

Memoirs of the Queensland Museum | **Nature** **62**

Queensland Museum Network respectfully acknowledges the Traditional Owners and Custodians of the lands, seas and regions across the state of Queensland.

© The State of Queensland, Queensland Museum 2020

PO Box 3300, South Brisbane 4101, Australia
Phone 06 7 3840 7555
Fax 06 7 3846 1226
Email qmlib@qm.qld.gov.au
Website www.qm.qld.gov.au

National Library of Australia card number
ISSN 0079-8835 Print
ISSN 2204-1478 Online

NOTE

Papers published in this volume and in all previous volumes of the *Memoirs of the Queensland Museum* may be reproduced for scientific research, individual study or other educational purposes. Properly acknowledged quotations may be made but queries regarding the republication of any papers should be addressed to the Editor in Chief. Copies of the journal can be purchased from the Queensland Museum Shop.

A Guide to Authors is displayed at the Queensland Museum web site www.qm.qld.gov.au

A Queensland Government Project
Typeset at the Queensland Museum

APPENDIX A – Supplementary Information

Cerabilia species holotypes and labels

Images here are arranged as the species emerge from the key. With each name in the alphabetical list below is a number corresponding to the image number. Additionally, the source collection of the specimens and their place of deposition, if different, is noted below the image. Images are single shot (not a merged stack) and have an associated scale with hash marks at 1.0 mm intervals. In addition to the labels the images, standard holotype (red) labels were applied on newly described species at the time of publication.

	Appendix image number		Appendix image number
<i>Feronista</i>		<i>Biliacera</i>	
<i>amaroides</i> (Moore, 1965)	19	<i>aite</i> Will, 2020.	47
<i>australiensis</i> Will, 2020	6	<i>amieuensis</i> Will, 2020.	41
<i>bellensis</i> Will, 2020.	30	<i>apicesecta</i> Will, 2020	31
<i>blatta</i> Will, 2020.	5	<i>discosetosa</i> Will, 2020.	44
<i>danbullaensis</i> Will, 2020	10	<i>dominatrix</i> Will, 2020	51
<i>gigas</i> Will, 2020	16	<i>drupa</i> Will, 2020.	38
<i>haigensis</i> Will, 2020	18	<i>edentata</i> Will, 2020.	45
<i>intermedia</i> (Moore, 1965)	22	<i>espee</i> Will, 2020	48
<i>iridescens</i> Will, 2020.	7	<i>francisca</i> Will, 2020	50
<i>kalkajaka</i> Will, 2020	11	<i>inversa</i> Will, 2020.	42
<i>lewisensis</i> Will, 2020	26	<i>kanakorum</i> Will, 2020	35
<i>loxandroides</i> Will, 2020	14	<i>klingonorum</i> Will, 2020	32
<i>minor</i> (Moore, 1965)	3	<i>koghisensis</i> Will, 2020	46
<i>monteithi</i> (Baehr, 2007)	29	<i>letalis</i> Will, 2020.	37
<i>montivaga</i> Will, 2020.	4	<i>mouensis</i> Will, 2020	34
<i>moorei</i> Will, 2020	15	<i>nana</i> Will, 2020	53
<i>mudda</i> Will, 2020	21	<i>neocaledonica</i> Will, 2020	49
<i>oodiformis</i> Will, 2020	25	<i>orbiculata</i> Will, 2020	54
<i>parva</i> Will, 2020.	9	<i>paniensis</i> Will, 2020.	40
<i>prolixa</i> Will, 2020.	24	<i>rubrica</i> Will, 2020.	36
<i>prosopogmoides</i> Will, 2020.	23	<i>ruginosa</i> Will, 2020	52
<i>reflexa</i> Will, 2020	13	<i>sternovillosa</i> Will, 2020	39
<i>securiclata</i> Will, 2020.	1	<i>vitalis</i> Will, 2020	33
<i>spinifer</i> Will, 2020	28	<i>wisei</i> Will, 2020	43
<i>spuh</i> Will, 2020.	2		
<i>storeyi</i> Will, 2020	8		
<i>stylata</i> Will, 2020	20		
<i>tipica</i> Will, 2020	17		
<i>uncata</i> Will, 2020	12		
<i>wunduensis</i> Will, 2020.	27		



Cerabilia (Feronista) securilata [1] QM



Cerabilia (Feronista) spuh [2] QM



Cerabilia (Feronista) minor [3] ANIC



Cerabilia (Feronista) montivaga [4] QM

Appendix A



Cerabilia (Feronista) blatta [5] QM



Cerabilia (Feronista) australiensis [6] QM



Cerabilia (Feronista) iridescens [7] QM



Cerabilia (Feronista) storeyi [8] QM



Cerabilia (Feronista) parva [9] ANIC



Cerabilia (Feronista) danbullaensis [10] ANIC



Cerabilia (Feronista) kalkajaka [11] QM



Cerabilia (Feronista) uncatata [12] QM

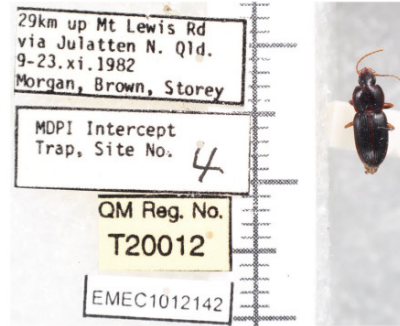
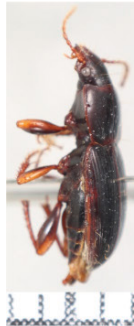
Appendix A



Cerabilia (Feronista) reflexa [13] QM



Cerabilia (Feronista) loxandroides [14] QM



Cerabilia (Feronista) moorei [15] QM



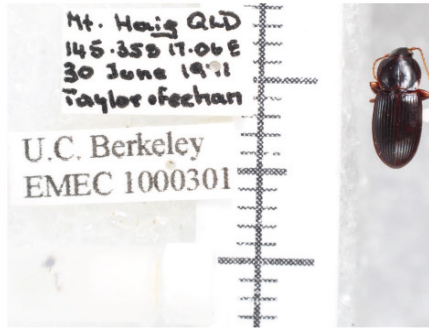
Cerabilia (Feronista) gigas [16] QM



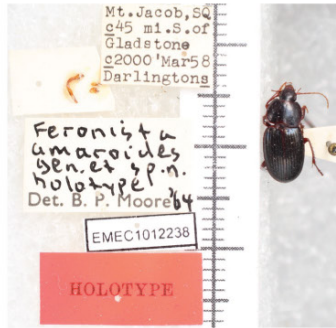
Cerabilia (Feronista) tipica [17] QM



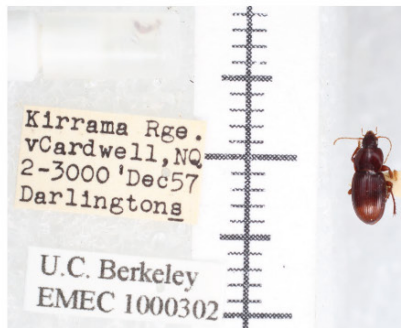
Cerabilia (Feronista) haigensis [18] ANIC



Cerabilia (Feronista) amaroides [19] ANIC



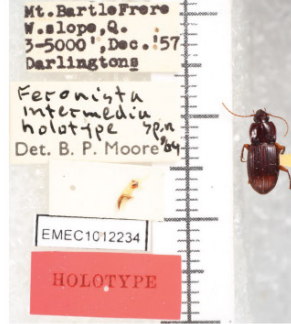
Cerabilia (Feronista) stylata [20] ANIC



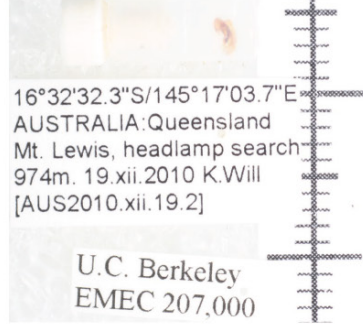
Appendix A



Cerabilia (Feronista) mudda [21] QM



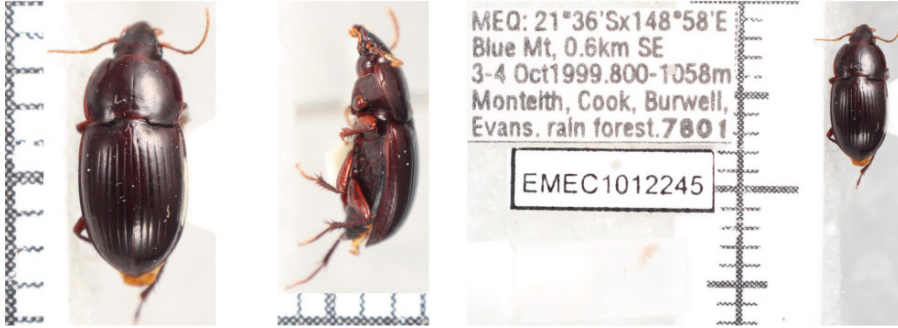
Cerabilia (Feronista) intermedia [22] ANIC



Cerabilia (Feronista) prosopogmoides [23] QM



Cerabilia (Feronista) prolixa [24] QM



Cerabilia (Feronista) oodiformis [25] QM



Cerabilia (Feronista) lewisensis [26] QM



Cerabilia (Feronista) wunduensis [27] QM



Cerabilia (Feronista) spinifer [28] QM

Appendix A



Cerabilia (Feronista) monteithi [29] QM



Cerabilia (Feronista) bellensis [30] QM



Cerabilia (Biliacera) apicesecta [31] source QM - deposited MNHN



Cerabilia (Biliacera) klingonorum [32] source EMEC - deposited MNHN



Cerabilia (Biliacera) vitalis [33] source EMEC - deposited MNHN



Cerabilia (Biliacera) mouensis [34] source QM - deposited MNHN



Cerabilia (Biliacera) kanakorum [35] source QM - deposited MNHN



Cerabilia (Biliacera) rubrica [36] source QM - deposited MNHN

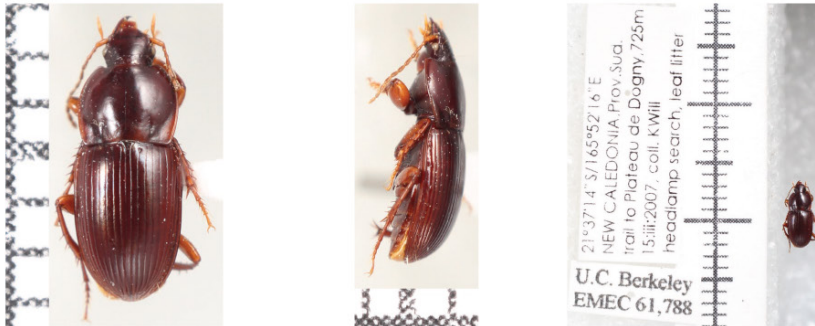
Appendix A



Cerabilia (Biliacera) letalis [37] source EMEC - deposited MNHN



Cerabilia (Biliacera) drupa [38] source QM - deposited MNHN



Cerabilia (Biliacera) sternovillosa [39] source EMEC - deposited MNHN



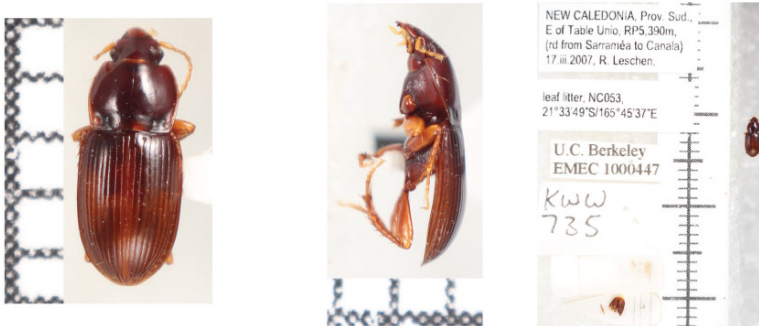
Cerabilia (Biliacera) paniensis [40] source QM - deposited MNHN



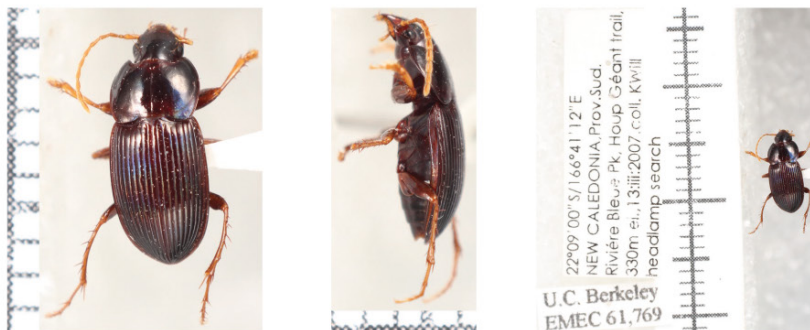
Cerabilia (Biliacera) amieuensis [41] source EMEC - deposited MNHN



Cerabilia (Biliacera) inversa [42] source NZAC - deposited MNHN



Cerabilia (Biliacera) wisei [43] source NZAC - deposited MNHN



Cerabilia (Biliacera) discosetosa [44] source EMEC - deposited MNHN

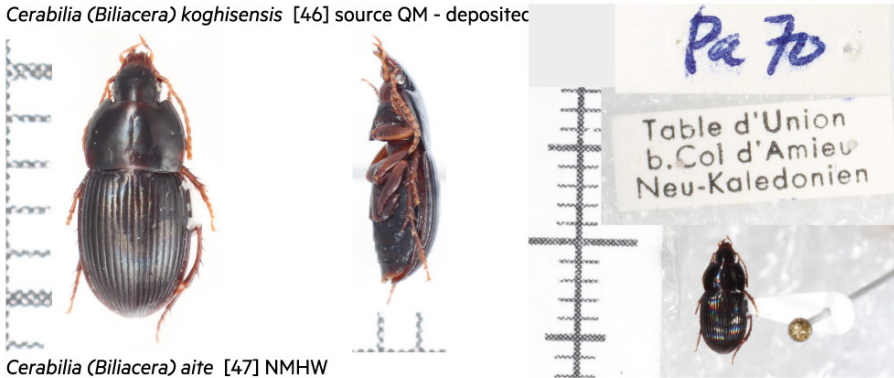
Appendix A



Cerabilia (Biliacera) edentata [45] source EMEC - deposited MNHN



Cerabilia (Biliacera) koghisensis [46] source QM - deposited



Cerabilia (Biliacera) aite [47] NMHW



Cerabilia (Biliacera) espee [48] source QM - deposited MNHN



Cerabilia (Biliacera) neocaledonica [49] source QM - deposited MNHN



Cerabilia (Biliacera) francisca [50] source EMEC - deposited MNHN



Cerabilia (Biliacera) dominatrix [51] source QM - deposited MNHN



Cerabilia (Biliacera) ruginosa [52] source NZAC - deposited MNHN

Appendix A



Cerabilia (Biliacera) nana [53] source QM - deposited MNHN



Cerabilia (Biliacera) orbiculata [54] source QM - deposited MNHN